

PARTS LIST FOR

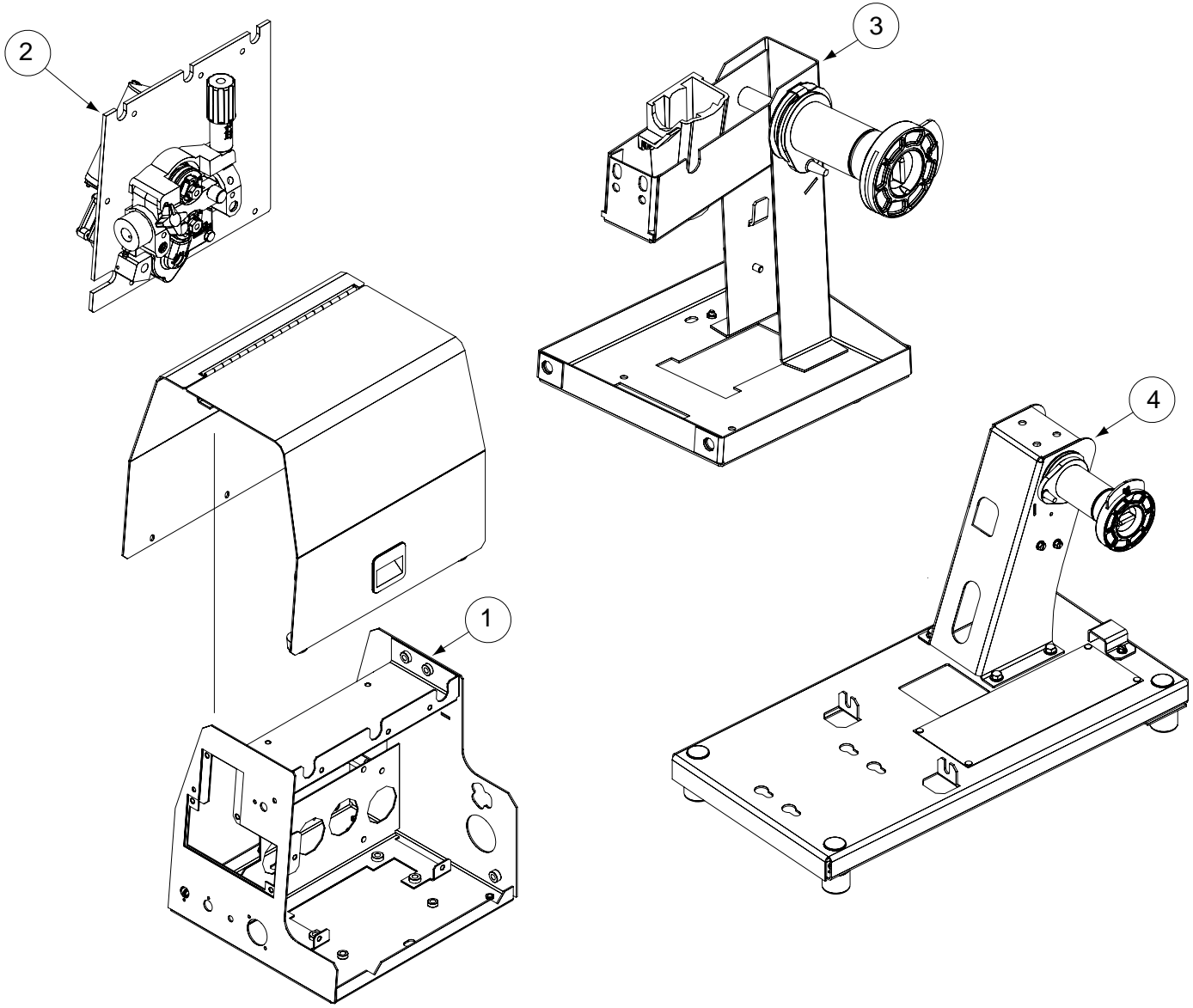
LF-72

Index of Sub Assemblies
Illustration of Sub Assemblies
Index of Sub Assemblies
Illustration of Sub Assemblies
Index of Sub Assemblies
Illustration of Sub Assemblies
Index of Sub Assemblies
Illustration of Sub Assemblies

LF-72



ILLUSTRATION OF SUB-ASSEMBLIES



Index of Sub Assemblies
Index of Sub Assemblies
Index of Sub Assemblies
Index of Sub Assemblies

LF-72

For Codes: 11075, 11076, 11077, 11209, 11210 & 11211 11227, 11290, 11291, 11292 & 11293

Do Not use this Parts List for a machine if its code number is not listed. Contact the Service Department for any code numbers not listed.

Use the Illustration of Sub-Assemblies page and the table below to determine which sub assembly page and column the desired part is located on for your particular code machine.

Sub Assembly Item No.		1	2	3	4				
SUB ASSEMBLY PAGE NAME	Optional Equipment Listing	Center Panel & Case Shell Assembly	Wire Drive Assembly	K2328-1 Wire Reel Stand	K1524-3 Wire Reel Stand and Base Assembly				
PAGE NO.	P-501-B.1	P-501-C	P-501-D	P-501-E	P-501-F				
CODE NO.									
11075 (Base Unit) (K2327-1)	1	1	1	•	•				
11076 (Bench) (K2327-2)	1	1	1	1	•				
11077 (HD Bench) (K2327-3)	1	1	1	•	1				
11209 (Base Unit) (K2327-1)	1	2	1	•	•				
11210 (Bench) (K2327-2)	1	2	1	1	•				
11211 (HD Bench) (K2327-3)	1	2	1	•	1				
11227 (Base, Int'l) (K2327-4)	1	2	1	•	•				
11290 (Base Unit) (K2327-1)	1	3	2	•	•				
11291 (Bench) (K2327-2)	1	3	2	1	•				

Illustration of Sub Assemblies

OPTIONAL EQUIPMENT LISTING

Miscellaneous Options Available for your machine are listed below:

Indicates a change this printing.

ITEM	DESCRIPTION	PART NO.	QTY.	1	2	3	4	5	6	7	8	9	10	11	12
	Remote Voltage Control Kit	K2329-1	1	X											
	Timer Kit	K2330-1	1	X											
	Standard Duty Wire Reel Stand	K2328-1	1	X											
	Lift Bail (for use w/Std Duty Bench Models)	K2331-1	1	X											
	Swivel Kit (for use w/Std Duty Bench Models)	K2332-1	1	X											
	Co-Axial Power Cable	K1796-[]	1	X											
	Work and Feeder Cables Package	K1803-1	1	X											
	Weld Power Cable, Twist-Mate to Lug	K1840-[]	1	X											
	Weld Power Cable, Twist-Mate to Twist-Mate	K1841-[]	1	X											
	Weld Power Cable, Lug to Lug	K1842-[]	1	X											
	Control Cable	K1797-[]	1	X											
	Adapter for Miller Power Sources	K2335-1	1	X											
	42 Volt Transformer Kit	K1520-1	1	X											
	Adapter Cable (For Control Cable to Terminal Strip Power Sources)	K1798	1	X											
	Ground Clamp	K910-1	1	X											
	Ground Clamp	K910-2	1	X											
	Gun Receiver Bushing (for guns w/K466-1 Lincoln gun connectors; Innershield and Subarc guns)	K1500-1	1	X											
	Gun Receiver Bushing (for guns w/K466-2 & -10 Lincoln gun connectors; Magnum 200/300/400 guns and compatible with Tweco® #4)	K1500-2 *	1	X											
	Gun Receiver Bushing (for guns w/K613-7 Lincoln gun connectors; Magnum 550 guns and compatible with Tweco® #5)	K1500-3	1	X											
	Gun Receiver Bushing (for guns w/K466-3 Lincoln gun connectors; compatible with Miller® guns)	K1500-4	1	X											
	Gun Receiver Bushing (compatible with Oxo® guns)	K1500-5	1	X											
	Gun Receiver Bushing (for Lincoln Fast-Mate Guns)	K489-7	1	X											
	Magnum 200/300/400 to K1500-2 Adapter	K466-2	1	X											
	Magnum 550 to K1500-3 Adapter	K613-7	1	X											
	Incoming Bushing For Lincoln Conduit .025-1/16" (0.6 - 1.6mm) wire	K1546-1	1	X											
	Incoming Bushing For Lincoln Conduit 1/16-1/8" (1.6 - 3.2mm) wire	K1546-2	1	X											
	Spindle Adapter - For mounting 14 lb. (6.4kg) Innershield Coils on 2 in (51mm) spindles	K435	1	X											
	Spindle Adapter - For mounting 8 in (203mm) diameter spools on 2 in (51mm) spindles	K468	1	X											
	Readi-Reel Adapter - For mounting 23-30 lb. (10.4-13.6 kg) reels to 2 in (51mm) spindles	K363P	1	X											
	Readi-Reel Adapter - For mounting 50-60 lb. (22.7-27.2 kg) reels to 2 in (51mm) spindles For use with Heavy Duty Bench models	K438	1	X											
	Coil Adapter - For mounting 50-60 lb. (22.7-27.2 kg) coils to 2 in (51mm) spindles For use with Heavy Duty Bench models	K1504-1	1	X											

Note: When ordering Cable, the dash number is the length of cable ordered.

Index of Sub Assemblies

OPTIONAL EQUIPMENT LISTING

Miscellaneous Options Available for your machine are listed below:

Indicates a change this printing.

ITEM	DESCRIPTION	PART NO.	QTY.	1	2	3	4	5	6	7	8	9	10	11	12
	Drive Roll Kits, Steel Wires (Includes: 2 V groove drive rolls & inner wire guide.)														
	.023-.030 (0.6-0.8mm)	KP1696-030S	1	X											
	.035 (0.9mm)	KP1696-035S	1	X											
	.045 (1.2mm)	KP1696-045S	1	X											
	.052 (1.4mm)	KP1696-052S	1	X											
	1/16 (1.6mm)	KP1696-1/16S	1	X											
	.035, .045 (0.9, 1.2mm)	KP1696-1	1	X											
	.040 (1.0mm)	KP1696-2	1	X											
	Drive Roll Kits, Cored Wires (Includes: 2 Knurled drive rolls & inner wire guide.)														
	.030-.035 (0.8-0.9mm)	KP1697-035C	1	X											
	.040-.045 (1.0-1.2mm)	KP1697-045C	1	X											
	.052 (1.4mm)	KP1697-052C	1	X											
	1/16 (1.6mm)	KP1697-1/16C	1	X											
	.068-.072 (1.7-1.8mm)	KP1697-068	1	X											
	5/64 (2.0mm)	KP1697-5/64	1	X											
	Drive Roll Kits, Aluminum Wire (Includes: 2 polished U groove drive rolls, outer wire guide & inner wire guide.)														
	.035 (0.9mm)	KP1695-035A	1	X											
	.040 (1.0mm)	KP1695-040A	1	X											
	3/64 (1.2mm)	KP1695-3/64A	1	X											
	1/16 (1.6mm)	KP1695-1/16A	1	X											

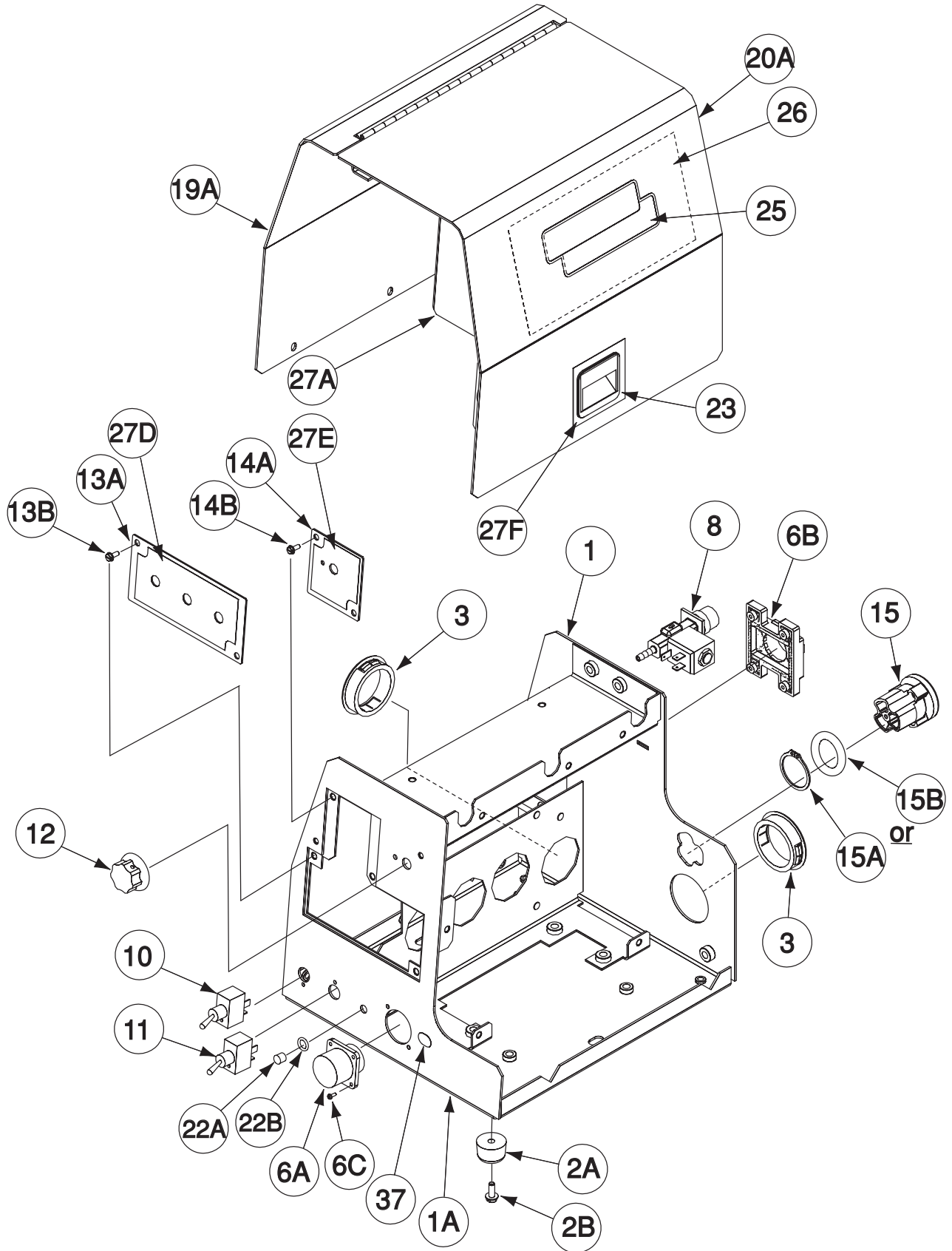
Index of Sub Assemblies

NOTES

LF-72



Center Panel & Case Shell Assembly



Index of Sub Assemblies

Part Numbers

Index of Sub Assemblies

Part Numbers

Index of Sub Assemblies

Part Numbers

Index of Sub Assemblies

Part Numbers

Indicates a change this printing.

Use only the parts marked "x" in the column under the heading number called for in the model index page.

ITEM	DESCRIPTION	PART NO.	QTY.	1	2	3	4	5	6	7	8	9
1	Center Panel & Case Shell Asbly	L12100	1	X	X	•						
1	Center Panel & Case Shell Asbly	L12100-1	1	•	•	X						
2A	Bumper	T14882-4	4	X	X	X						
2B	#10-24 x .50 HHCS	CF000371	4	X	X	X						
3	Bushing	T12380-1	2	X	X	X						
4	Bushing (Not Shown)	T12380-3	1	X	X	X						
5	Common Analog P.C. Board (Not Shown)	S26049-[]	1	X	X	•						
5	Common Analog P.C. Board (Not Shown)	S26355-[]	1	•	•	X						
5A	#10-24 HLN (Not Shown)	T9187-13	4	X	X	X						
6A	Harness, Includes:	G4471	1	X	•	•						
	Harness, Includes:	G4471-1	1	•	X	•						
	Harness, Includes:	G4910	1	•	•	X						
	Connector (5 Socket) (P4)	S12021-66	1	X	X	X						
6B	Potentiometer (Not Shown)	T10812-119	1	X	X	X						
	Potentiometer Spacer (Not Shown)	S18280	1	X	X	X						
	Connector (14 Pin) (P6)	M22256	1	X	X	X						
	LED, Yellow (Not Shown)	T13657-4FA	1	X	X	X						
6C	LED Connector & Terminal Assembly (Not Shown)	S25311-1	1	X	X	X						
	Self Tapping Screw	S8025-96	6	X	X	X						
7	Diode - Bridge (Not Shown)	T13637-1	1	X	X	X						
7A	#10-24 HLN (Not Shown)	T9187-13	1	X	X	X						
8	Solenoid Valve Assembly	M17294-8	1	X	X	X						
8A	Plain Washer (Not Shown)	S9262-149	1	X	X	X						
8B	Conduit Locknut (Not Shown)	T14370-1	1	X	X	X						
9A	Flex Tube (Not Shown)	T10642-179	1	•	X	X						
9A	Flex Tube (Not Shown)	T10642-267	1	X	•	•						
9B	Hose Clamp (Not Shown)	T13777-8	2	X	X	X						
10	Toggle Switch	T10800-38	1	X	X	X						
11	Toggle Switch	T10800-49	1	X	X	X						
12	Knob	T10491	1	X	X	X						
13A	Timer Kit Panel	S25706	1	X	X	X						
13B	#10-24 x .50 HHCS	CF000371	2	X	X	X						
14A	Remote Kit Panel	S25707	1	X	X	X						
14B	#10-24 x .50 HHCS	CF000371	2	X	X	X						
15	Ball Bushing Assembly	M18947-1	1	X	X	X						
15A	Retaining Ring	S9776-18	1	X	•	•						
15B	"O" Ring	T13483-37	1	•	X	X						
19A	Wraparound	L12095	1	X	X	X						
19B	#10-24 x .50 HHCS (Not Shown)	CF000371	5	X	X	X						
20A	Door & Hinge Assembly	L12097	1	X	X	X						
20B	#10-24 x .50 HHCS (Not Shown)	CF000371	3	X	X	X						
22A	LED, Lens for Panel Mount, Includes:	S23093-1	1	X	X	X						
22B	Retaining "O" Ring (Not Shown)	S23094-1	1	X	X	X						
23	Door Latch	S21033-1	1	X	X	X						
24A	5/16 x .75 HHCS (Not Shown)	CF000040	4	X	X	X						
24B	Lock Washer (Not Shown)	E106A-3	4	X	X	X						
24C	Plain Washer (Not Shown)	S9262-121	4	X	X	X						
25	Decal, Logo	S11893-2	2	X	X	X						
26	Decal, Door	M20411	1	X	X	X						

#

Index of Sub Assemblies
 Sub Assembly Illustration
 Index of Sub Assemblies
 Sub Assembly Illustration
 Index of Sub Assemblies
 Sub Assembly Illustration
 Index of Sub Assemblies
 Sub Assembly Illustration

Indicates a change this printing.

Use only the parts marked "x" in the column under the heading number called for in the model index page.

ITEM	DESCRIPTION	PART NO.	QTY.	1	2	3	4	5	6	7	8	9
27A	Nameplate, Includes: (27A thru 27G)	L12136	1	X	X	X						
	Decal, Door	L12136-2	1	X	X	X						
27B	Decal, Tighten/Loosen (Not Shown)	L12136-3	1	X	X	X						
27C	Decal, Gas Inlet (Not Shown)	L12136-4	1	X	X	X						
27D	Decal, Timer Panel	L12136-5	1	X	X	X						
27E	Decal, Remote Control	L12136-6	1	X	X	X						
27F	Decal, Door Latch (Not Shown)	L12136-7	1	X	X	X						
27G	Decal, Over Current Protection	L12136-8	1	•	•	X						
32	Warning Decal (Not Shown)	S20601	1	X	X	X						
33	Warning Decal (Not Shown)	S25536	1	X	X	X						
34	Decal, Pressure Arm (Not Shown)	S25890	1	X	X	X						
36	Wiring Diagram (Not Shown)	L12146	1	X	•	•						
36	Wiring Diagram (Not Shown)	L12146-1	1	•	X	•						
36	Wiring Diagram (Not Shown)	L12146-2	1	•	•	X						
37	CCC Decal	T13086-191	1	•	•	X						
38	Country of Origin Decal (Not Shown)	S24727-1	1	•	•	X						

Note: When ordering new printed circuit boards indicate the dash number [] of the "Old" board that is to be replaced. This will aid Lincoln in supplying the correct and latest board along with any necessary jumpers or adapters. The dash number brackets [] have purposely been left blank as to eliminate errors, confusion and updates.

Index of Sub Assemblies
 Sub Assembly Illustration
 Index of Sub Assemblies
 Sub Assembly Illustration
 Index of Sub Assemblies
 Sub Assembly Illustration
 Index of Sub Assemblies
 Sub Assembly Illustration

NOTES

Index of Sub Assemblies

Index of Sub Assemblies

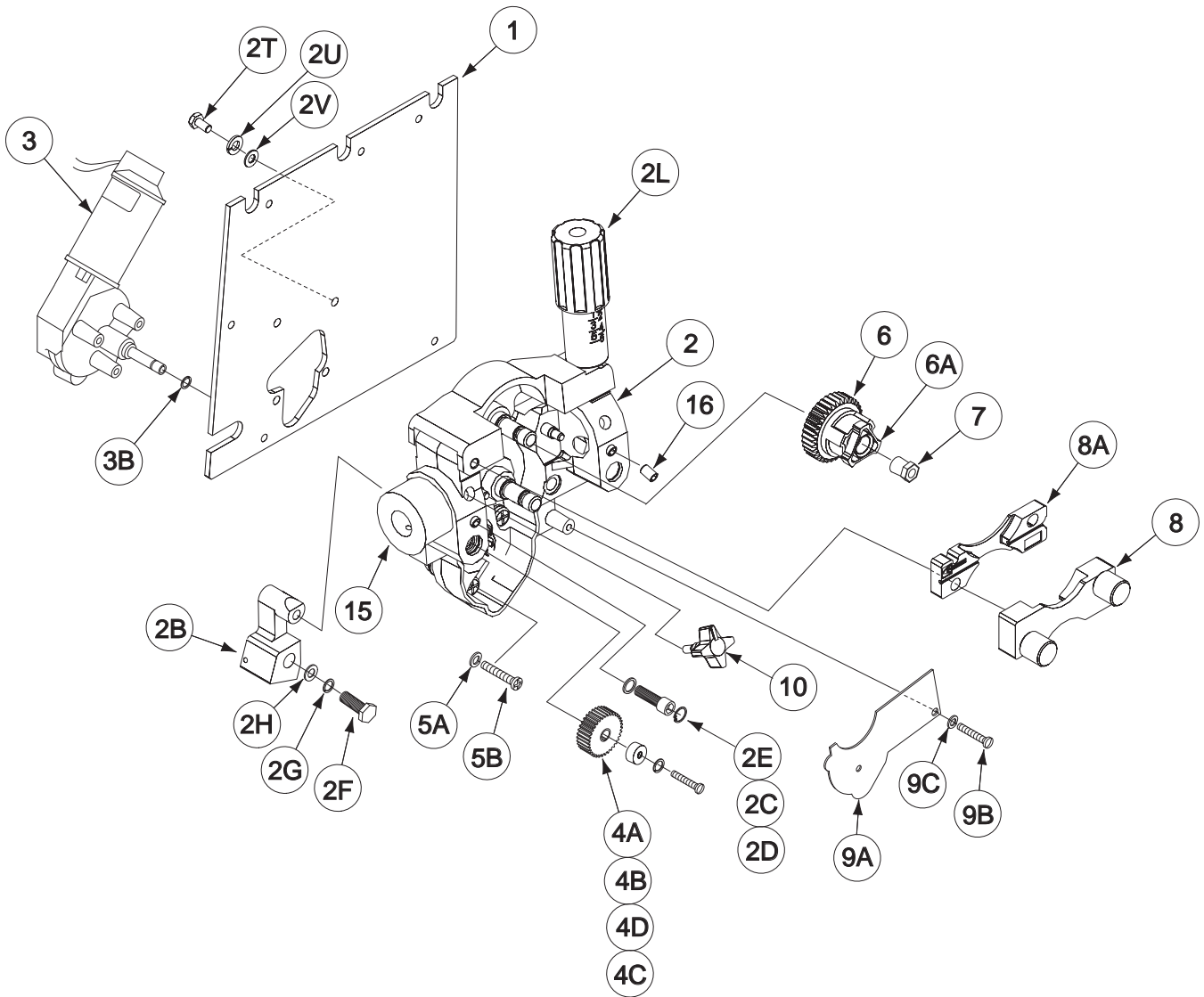
Index of Sub Assemblies

Index of Sub Assemblies

LF-72



Wire Drive Assembly



Index of Sub Assemblies

Part Numbers

Index of Sub Assemblies

Part Numbers

Index of Sub Assemblies

Part Numbers

Index of Sub Assemblies

Part Numbers

Indicates a change this printing.

Use only the parts marked "x" in the column under the heading number called for in the model index page.

ITEM	DESCRIPTION	PART NO.	QTY.	1	2	3	4	5	6	7	8	9
1	Wire Drive Assembly, Includes: Wire Drive Assembly, Includes: Gearbox Mounting Panel	M20280-1 M20280-2 L12091	1 1 1	X • X	• X X							
2	Feed Plate Assembly: Includes:	M19932-3	1	X	X							
2A	Feed Plate (Not Shown) (G3345-3)	NSS	1	X	X							#
2B	Connection Bar	M19611-3	1	X	X							
2C	Socket Head Cap Screw	T9447-112	1	X	X							
2D	Plain Washer	S9262-167	1	X	X							
2E	Retaining Ring	S9776-69	1	X	X							
2F	1/2-13X1.00 HHCS	CF000021	1	X	X							
2G	Lock Washer	E106A-15	1	X	X							
2H	Plain Washer	S9262-1	1	X	X							
2J	Idle Arm (Not Shown) (L10546-2)	NSS	1	X	X							#
2K	Dowel Pin (Not Shown) (T13942-14)	NSS	1	X	X							#
2L	Adjustment Arm Assembly	M19179-1	1	X	X							#
2M	Roll Pin (Not Shown) (T9967-35)	NSS	1	X	X							#
2N	Roll Pin (Not Shown) (T9967-3)	NSS	1	X	X							#
2P	Wire Guide Retaining Pin (S22672)	NSS	2	X	X							#
2Q	Shaft (Not Shown) (S25402)	NSS	2	X	X							#
2T	1/4-20 x .625 HHCS	CF000012	4	X	X							
2U	Lock Washer	E106A-2	4	X	X							
2V	Plain Washer	S9262-23	4	X	X							
3	Motor Gearbox Assembly, Includes:	L12073	1	X	•							
3	Motor Gearbox Assembly, Includes:	L12081	1	•	X							
3A	Plug Housing (Not Shown)	S24018-8	1	X	X							
3B	Snap Ring	S9776-27	1	X	X							
3C	Woodruff Key (Not Shown)	S24170-1	1	X	X							
4A	Drive Gear	M19870	1	X	X							
4B	Collar	S25414	1	X	X							
4C	Metric Screw	T14731-47	1	X	X							
4D	Lock Washer	T4291-A	1	X	X							
5A	Lock Washer	E106A-2	3	X	X							
5B	M6 x 1.00 Phillips Pan Head Screw	T14731-18	3	X	X							
6	Mold Drive Roll Shaft Assembly, Includes:	S25638	2	X	X							
6A	Twist Lock Ring	S25308	2	X	X							
7	Retainer	S25403	2	X	X							
8	Wire Guide Assembly (Outer)	S22737-2	1	X	X							
8A	Wire Guide, Inner	M18970-6	1	X	X							
9A	Cover	M19999	1	X	X							
9B	1/4-20 x .50 HHCS	CF000012	1	X	X							
9C	Lock Washer	E106A-2	1	X	X							
10	Screw Stud	T13858	1	X	X							
15	Gun Adapter	S22905-2	1	X	X							
16	Set Screw	S11604-21	1	X	X							
18	Ball Housing (Not Shown)	M18946	1	X	X							
19	Maxtrac Decal (Not Shown)	S26310	1	X	X							
20	Brush & Spring Asbly (L12073-G) (Not Shown)	NSS	2	X	•							#

NSS - Not Sold Separately

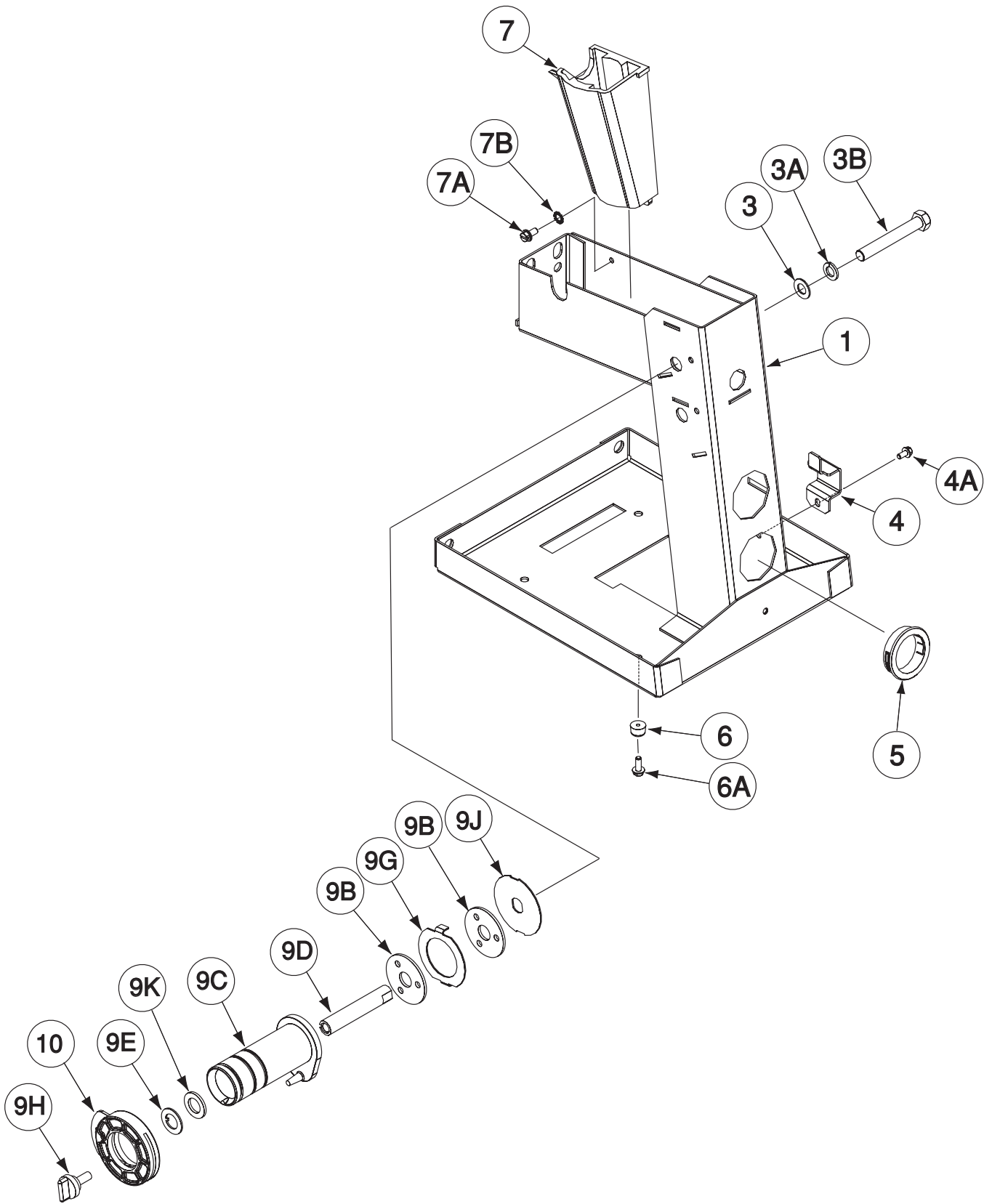
LF-72

10-13-2009



Index of Sub Assemblies
 Sub Assembly Illustration
 Index of Sub Assemblies
 Sub Assembly Illustration
 Index of Sub Assemblies
 Sub Assembly Illustration
 Index of Sub Assemblies
 Sub Assembly Illustration

K2328-1 Wire Reel Stand



Index of Sub Assemblies

Part Numbers

Index of Sub Assemblies

Part Numbers

Index of Sub Assemblies

Part Numbers

Index of Sub Assemblies

Part Numbers

Indicates a change this printing.

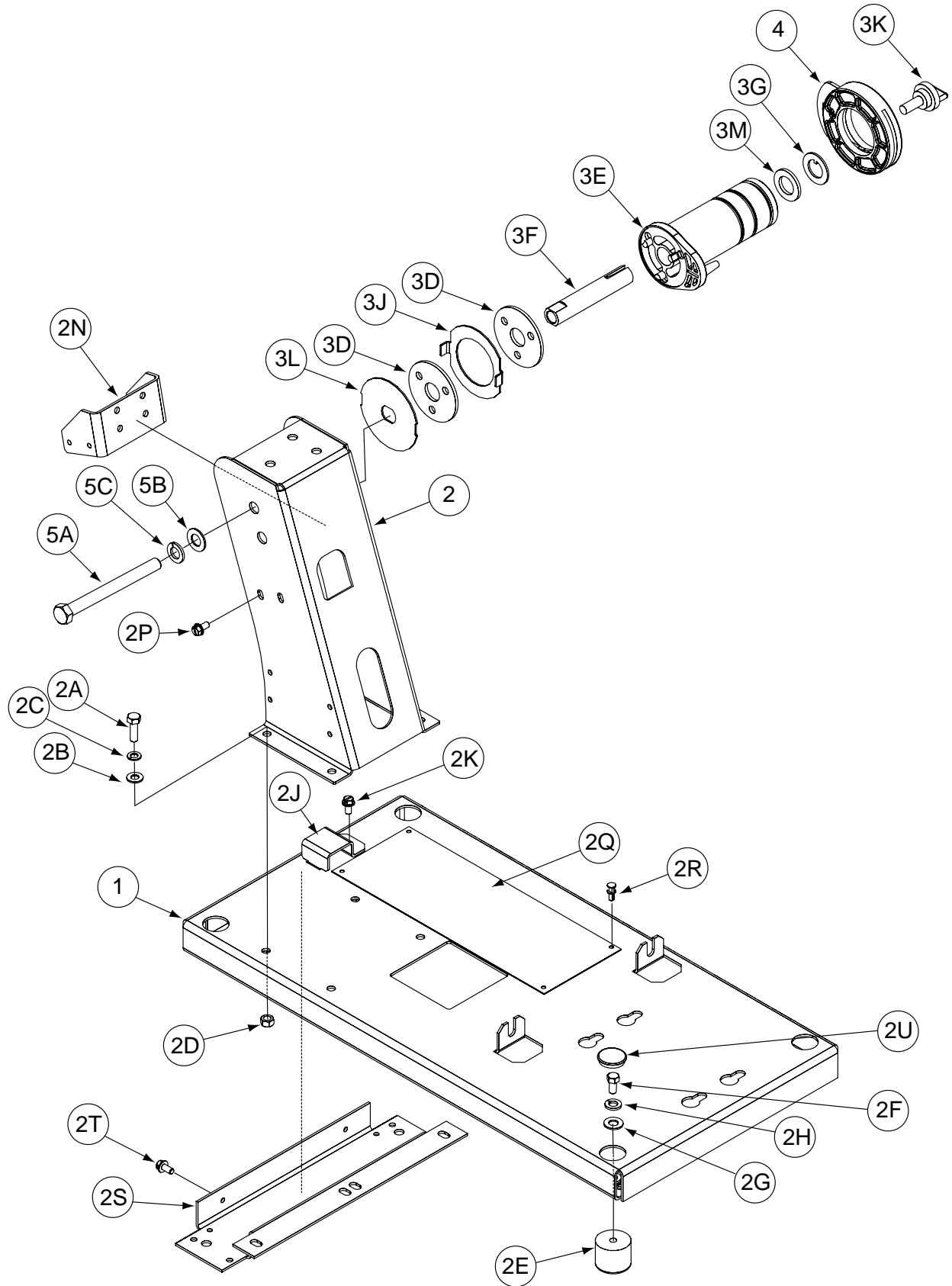
Use only the parts marked "x" in the column under the heading number called for in the model index page.

ITEM	DESCRIPTION	PART NO.	QTY.	1	2	3	4	5	6	7	8	9
1	Wire Stand (L12268), Includes: Wire Stand Welded Assembly	K2328-1 G4449	1 1	X X								
3	Plain Washer	S9262-1	1	X								
3A	Lock Washer	E106A-15	1	X								
3B	1/2-13 x .50 HHCS	T8833-65	1	X								
4	Cable Clamp	S22523	1	X								
4A	Thread Forming Screw	S9225-68	1	X								
5	Bushing	T12380-1	2	X								
6	Bumper	T14882-4	2	X								
6A	#10-24 x .50 HHCS	CF000371	2	X								
7	Holster	G3581	1	X								
7A	Thread Forming Screw	S9225-68	1	X								
7B	Lock Washer	T9860-6	1	X								
8	Steel Tubing (Not Shown)	S10153-80	1	X								
9	Spindle Ref. Assembly, Includes:	M14935-2	1	X								
9B	Friction Washer	S17435-4	2	X								
9C	Spindle	L10560	1	X								
9D	Spindle Shaft	S22975	1	X								
9E	Keyed Washer	T12965-2	1	X								
9F	Compression Spring (Not Shown)	T11862-14	1	X								
9G	Brake Plate Lock	S23968	1	X								
9H	Thumb Screw	T14813-B	1	X								
9J	Brake Plate	S23972	1	X								
9K	Friction Washer	S17435-3	1	X								
10	Retaining Collar Assembly	S23811	1	X								

#

Index of Sub Assemblies
 Sub Assembly Illustration
 Index of Sub Assemblies
 Sub Assembly Illustration
 Index of Sub Assemblies
 Sub Assembly Illustration
 Index of Sub Assemblies
 Sub Assembly Illustration

K1524-3 Wire Reel Stand & Base Assembly



Index of Sub Assemblies
 Index of Sub Assemblies
 Index of Sub Assemblies
 Index of Sub Assemblies

Part Numbers
 Part Numbers
 Part Numbers
 Part Numbers

Indicates a change this printing.

Use only the parts marked "x" in the column under the heading number called for in the model index page.

ITEM	DESCRIPTION	PART NO.	QTY.	1	2	3	4	5	6	7	8	9
1	Reel Stand & Base Asbly (L10229-2), Includes: Base	K1524-3 M18320-2	1 1	X X								
2	Mast Welded Assembly, Includes:	M18745	1	X								
2A	5/16-18 x 1.00 HHCS	CF000062	4	X								
2B	Plain Washer	S9262-121	4	X								
2C	Lock Washer	E106A-14	4	X								
2D	5/16-18 HN	CF000029	4	X								
2E	Rubber Isolator	S20979	4	X								
2F	3/8-16 x .75 HHCS	CF000034	4	X								
2G	Plain Washer	S9262-120	4	X								
2H	Lock Washer	E106A-16	4	X								
2J	Cable Clamp	S22523	1	X								
2K	Thread Forming Screw	S9225-68	1	X								
2N	Support Bracket	S22957	1	X								
2P	Thread Forming Screw	S9225-68	4	X								
2Q	Insulation	S23721	1	X								
2R	Fastener Button	T14659-3	4	X								
2S	Support Bracket	M18746-1	1	X								
2T	Thread Forming Screw	S9225-68	2	X								
2U	Plug Button	T10397-23	4	X								
3	Spindle Assembly, Includes:	M14935-2	1	X								
3D	Friction Washer	S17435-4	2	X								
3E	Spindle	L10560	1	X								
3F	Spindle Shaft	S22975	1	X								
3G	Keyed Washer	T12965-2	1	X								
3H	Compression Spring (Not Shown)	T11862-14	1	X								
3J	Brake Plate Lock	S23968	1	X								
3K	Thumb Screw	T14813-B	1	X								
3L	Brake Plate	S23972	1	X								
3M	Friction Washer	S17435-3	1	X								
4	Retaining Collar Assembly	S23811	1	X								
5A	1/2-13 x 5.25 HHCS	T8833-59	1	X								
5B	Plain Washer	S9262-1	1	X								
5C	Lock Washer	E106A-15	1	X								

#

Index of Sub Assemblies
 Sub Assembly Illustration
 Index of Sub Assemblies
 Sub Assembly Illustration
 Index of Sub Assemblies
 Sub Assembly Illustration
 Index of Sub Assemblies
 Sub Assembly Illustration

NOTES

Index of Sub Assemblies

Index of Sub Assemblies

Index of Sub Assemblies

Index of Sub Assemblies

LF-72

