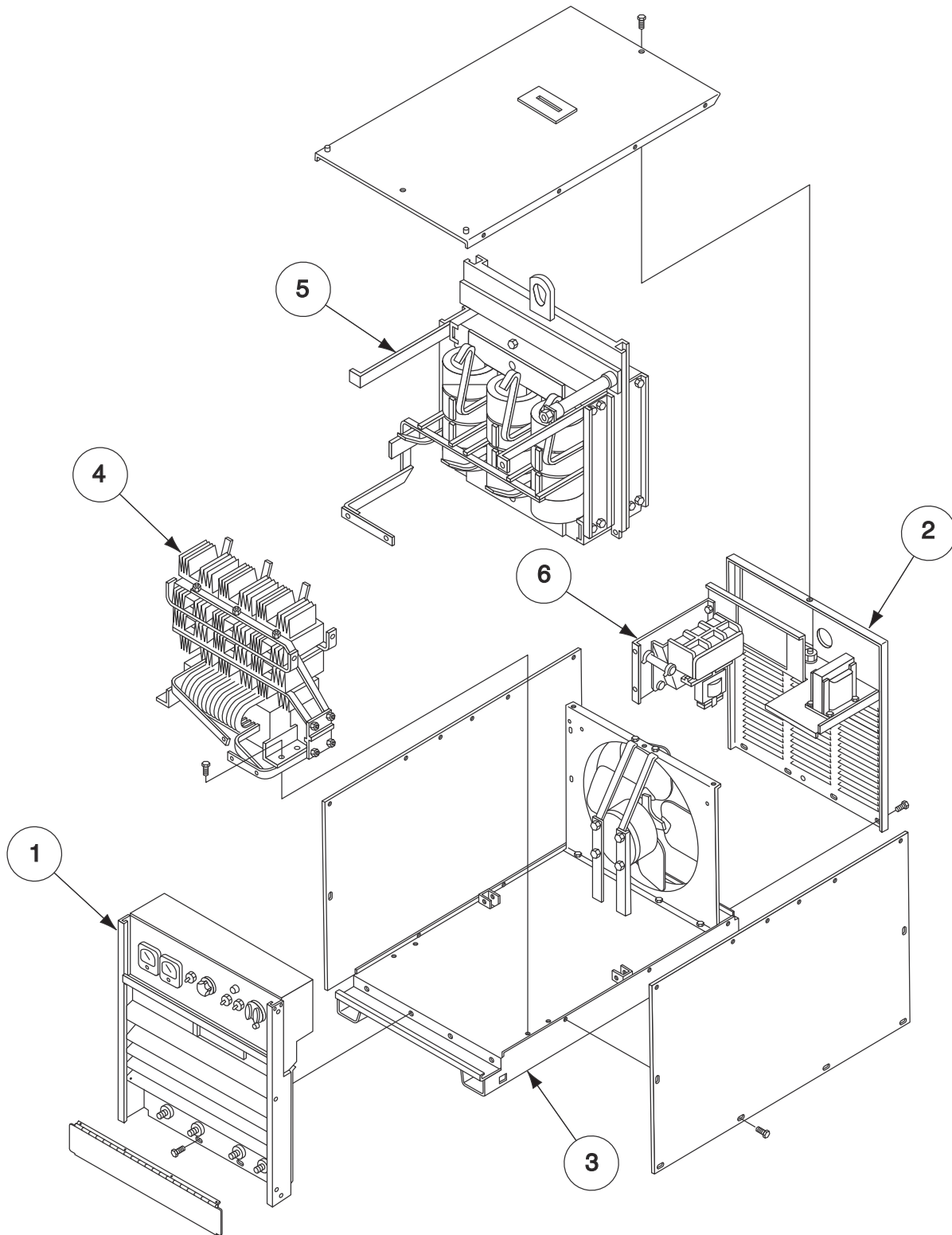


PARTS LIST FOR
Idealarc[®] DC-1000

IDEALARC[®] DC-1000



ILLUSTRATION OF SUB-ASSEMBLIES



Idealarc® DC-1000

**For Codes: 8631 to 9925, 10293, 11305, 11330, 11331,
11332, 11333, 11334, 11681, 11682, 11683 & 11684**

Do Not use this Parts List for a machine if its code number is not listed. Contact the Service Department for any code numbers not listed.

Use the Illustration of Sub-Assemblies page and the table below to determine which sub assembly page and column the desired part is located on for your particular code machine.

Sub Assembly Item No. 			1	2	3	4	5	6	
SUB ASSEMBLY PAGE NAME 	Optional Equipment	Miscellaneous Items	Case Front & Control Box	Case Back Assembly	Base, Fan, Roof and Case Sides	Output Rectifier & Choke Assembly	Lift Bale & Transformer Assembly	S78 Contactor	
PAGE NO. 	P-146-B.1	P-146-B.2	P-146-C	P-146-D	P-146-E	P-146-F	P-146-G	P-28-J	
CODE NO. 									
8631		1	1	1	1	1	1	34	
8632		1	1	1	1	1	1	34	
8640		1	1	1	1	1	1	34	
8641		1	1	1	1	1	1	34	
8642		1	1	1	1	1	1	34	
8644		1	1	1	1	1	1	34	
8656		1	1	1	1	1	1	34	
8687		1	1	1	1	1	1	34	
8721		1	1	1	1	1	1	34	
8795		1	1	1	1	1	1	34	
8796		1	1	1	1	1	1	34	
8797		1	1	1	1	1	1	34	
8812		1	1	1	1	1	1	34	
8905		1	1	1	1	1	1	34	
8961		1	1	1	1	1	1	34	
8964		1	1	1	1	1	1	34	
8981		1	1	1	1	1	1	34	
9098		1	1	1	1	1	1	34	
9099		1	1	1	1	1	1	34	
9151		1	1	1	1	1	1	34	
9337		1	1	1	1	1	1	34	
9475		1	1	1	1	1	1	34	
9572		1	1	1	1	1	1	34	
9573		1	1	1	1	1	1	34	
9574		1	1	1	1	1	1	34	
9575		1	1	1	1	1	1	34	
9609		1	1	1	1	1	1	34	
9622		1	1	1	1	1	1	34	
9623		1	1	1	1	1	1	34	



Idealarc® DC-1000

**For Codes: 8631 to 9925, 10293, 11305, 11330, 11331,
11332, 11333, 11334, 11681, 11682, 11683 & 11684**

Do Not use this Parts List for a machine if its code number is not listed. Contact the Service Department for any code numbers not listed.

Use the Illustration of Sub-Assemblies page and the table below to determine which sub assembly page and column the desired part is located on for your particular code machine.

Sub Assembly Item No. →			1	2	3	4	5	6	
SUB ASSEMBLY PAGE NAME ↔	Optional Equipment	Miscellaneous Items	Case Front & Control Box	Case Back Assembly	Base, Fan, Roof and Case Sides	Output Rectifier & Choke Assembly	Lift Bale & Transformer Assembly	S78 Contactor	
PAGE NO. →	P-146-B.1	P-146-B.2	P-146-C	P-146-D	P-146-E	P-146-F	P-146-G	P-28-J	
CODE NO. ↓									
9919		1	2	1	1	1	1	34	
9920		1	2	1	1	1	1	34	
9921		1	2	1	1	1	1	34	
9922		1	2	1	1	1	1	34	
9923		1	2	1	1	1	1	34	
9924		1	2	1	1	1	1	34	
9925		1	2	1	1	1	1	34	
10293M		1	2	1	1	1	1	34	
11305		2	3	1	1	1	1	34	
11330		1	4	1	1	1	1	34	
11331		1	4	1	1	1	1	34	
11332		1	4	1	1	1	1	34	
11333		1	4	1	1	1	1	34	
11334		2	5	1	1	1	1	34	
11681		3	5	2	1	1	1	34	
11682		3	5	2	1	1	1	34	
11683		3	5	2	1	1	1	34	
11684		3	5	2	1	1	1	34	



OPTIONAL EQUIPMENT LISTING

Miscellaneous Options Available for your machine are listed below:

Indicates a change this printing.

DESCRIPTION	PART NUMBER
Paralleling Kit	Order K1897-1
Remote Output Kit	Order K775



MISCELLANEOUS ITEMS
(THESE ITEMS ARE NOT ILLUSTRATED)

Indicates a change this printing.

Use only the parts marked "x" in the column under the heading number called for in the model index page.

DESCRIPTION	PART NO.	QTY.	1	2	3	4	5	6	7	8	9
Caution Decal	9SS13504	1	X	X	X						
Grounding Decal	9ST13259	1	X	X	X						
Warning Decal	9ST13086-20	1	X	X	X						
Instruction Decal	9ST14751	1	X	.	.						
Instruction Decal	9ST14753	1	.	X	X						
Earth Ground Connection Decal	9ST13260-4	1	X	X	X						
Rating Plate (Codes 11684 & 11334)	9SS24579-9	1	.	X	X						
Rating Plate (Codes 11681 & 11330)	9SS24579-10	1	X	.	X						
Rating Plate (Codes 11682 & 11331)	9SS24579-11	1	X	.	X						
Rating Plate (Codes 11683 & 11332)	9SS24579-12	1	X	.	X						
Rating Plate (Code 11333)	9SS25479-13	1	X	.	.						
Country of Origin Decal (Codes 11305, 11333, 11334 & 11684)	9SS24727-1	1	X	X	X						
CCC Decal (Codes 11305, 11333, 11334 & 11684)	9ST13086-191	1	X	X	X						
Ident. Sticker	9ST12286-3	1	X	.	.						
Ident. Sticker (1CR)	9ST12286-1	1	.	X	X						
Warning Decal (Codes 9924, 9925, 10293M 11305, 11334 & 11684)	9SL8064-1	1	.	X	X						
C-Tick Decal (Codes 9924, 9925, 10293M, 11330 & 11681)	9ST13086-169	1	X	.	X						
EC Conformity Decal (Codes 9924, 9925 & 10293M)	9ST13086-130	1	X	.	.						
Warranty Decal (Codes 9919, 9920, 9921, 9922 & 9923)	9SS22127-2	1	X	.	.						

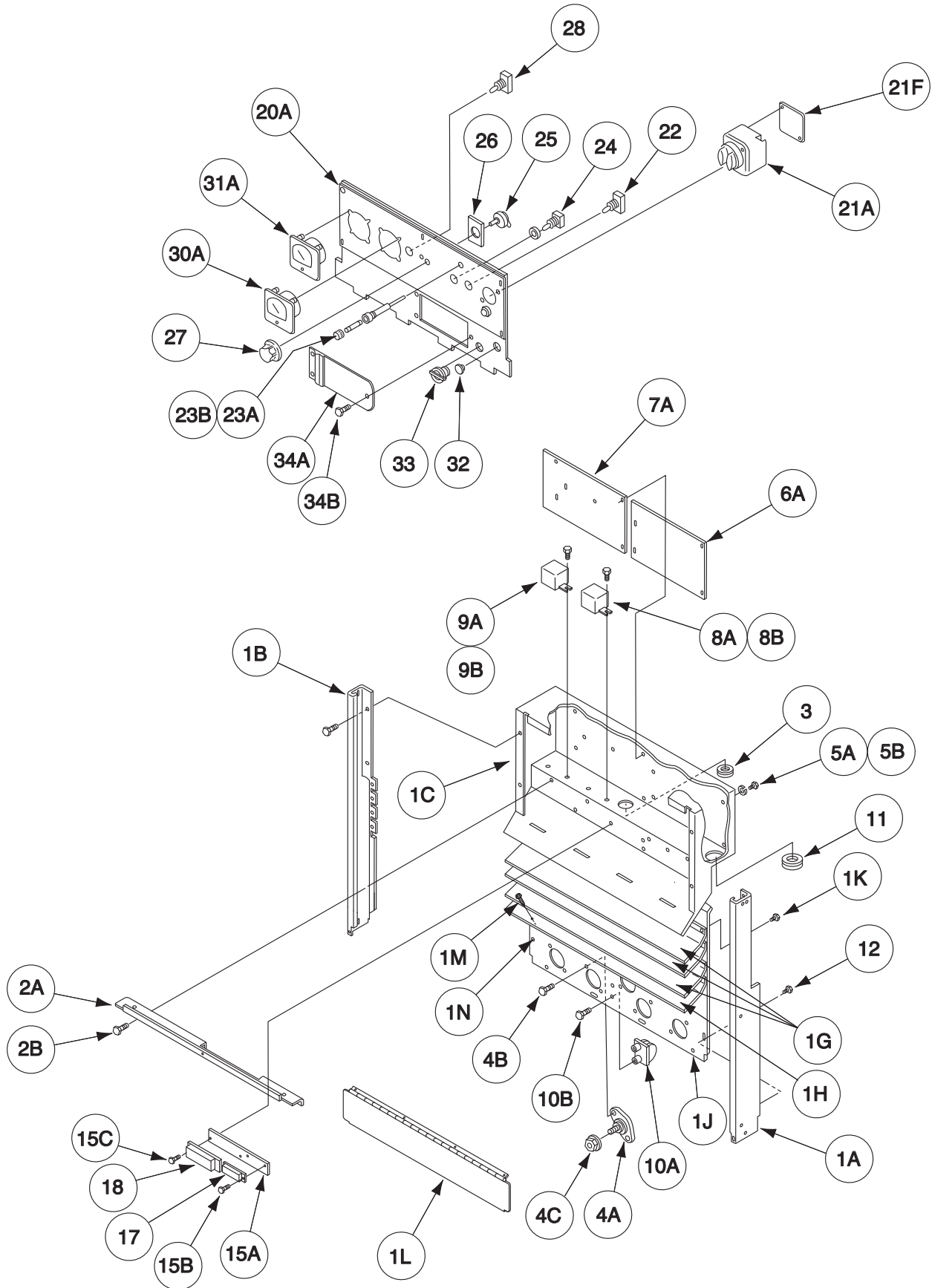


NOTES

IDEALARC® DC-1000



Case Front & Control Box Assembly



Indicates a change this printing.

Use only the parts marked "x" in the column under the heading number called for in the model index page.

ITEM	DESCRIPTION	PART NO.	QTY.	1	2	3	4	5	6	7	8	9
1	Front Support & Control Box Assembly, Includes:	9SL7521-2	1	•	X	•	X	•				
1	Front Support & Control Box Assembly, Includes:	9SL7521-15	1	•	•	X	•	X				
1A	Case Front Support	9SL7517-1	1	•	X	X	X	X				
1B	Case Front Support	9SL7517-2	1	•	X	X	X	X				
1C	Control Box	9SL9006	1	•	X	X	X	X				
1G	Louver	9SM15391-2	3	•	X	X	X	X				
1H	Louver	9SM15391-2	1	•	X	•	X	•				
1H	Louver	9SM15391-3	1	•	•	X	•	X				
1J	Output Panel	9SL9005	1	•	X	X	X	X				
1K	Self Tapping Screw	9SS8025-91	12	•	X	X	X	X				
1L	Stud Cover Assembly	9SM17097	1	•	•	X	•	X				
1M	Self Tapping Screw	9SS8025-92	4	•	•	X	•	X				
1N	Self Tapping Screw	9SS8025-92	2	•	X	X	X	X				
1	Front Support & Baffle Assembly, Includes:	9SL6496	1	X	•	•	•	•				
1A	Case Front Support	9SL6594-1 0	1	X	•	•	•	•				
1B	Case Front Support	9SL6594-2 0	1	X	•	•	•	•				
1G	Louver	9SM13971-2	4	X	•	•	•	•				
1K	Self Tapping Screw	9SS8025-65	8	X	•	•	•	•				
2A	Control Box Partition	9SM14301	1	X	X	X	X	X				
2B	Self Tapping Screw	9SS8025-91	3	X	X	X	X	X				
3	Bushing	9ST14614-1	1	X	X	X	X	X				
4A	Output Terminal Assembly	9SS16656-4	5	•	X	X	X	X				
4A	Output Terminal Assembly	9SS16656-2	5	X	•	•	•	•				
4B	Thread Forming Screw	9SS9225-30	10	•	•	•	X	X				
4C	Output Stud Nut	9ST3960	5	•	•	•	X	X				
5A	Thread Forming Screw	9SS9225-36	1	X	X	X	X	X				
5B	Lock Washer	9ST9695-1	1	X	X	X	X	X				
5C	Plain Washer (Not Shown)	9SS9262-27	2	X	X	X	X	X				
5D	#10-24 HN (Not Shown)	9SCF000010	2	X	X	X	X	X				
6A	Control P.C. Board	9SG1585-3	1	X	X	X	X	X				
6B	P.C. Board Support (Not Shown)	9SS19300-3	5	X	X	X	X	X				
7A	Firing Circuit P.C. Board	9SG1486-5	1	X	X	X	X	X				
7B	P.C. Board Support (Not Shown)	9SS19300-3	6	X	X	X	X	X				
8A	Relay (4CR)	9SS14293-8	1	X	X	X	X	X				
8B	Self Tapping Screw	9SS8025-62	2	X	X	X	X	X				
8C	I.D. Sticker (Not Shown)	9ST12286-4	1	X	X	X	X	X				
9A	Relay (2CR)	9SS14293-12	1	X	X	X	X	X				
9B	Self Tapping Screw	9SS8025-62	1	X	X	X	X	X				
9C	I.D. Sticker (Not Shown)	9ST12286-2	2	X	X	X	X	X				
10A	Output Snubber	9SM14312	1	X	•	•	•	•				
10A	Output Snubber	9SM14312-1	1	•	X	X	X	X				
10B	Self Tapping Screw	9SS8025-97	2	X	X	X	X	X				
11	Bushing	9ST12380-1	1	X	X	X	X	X				
12	Self Tapping Screw	9SS8025-92	2	X	X	X	X	X				
13	Decal (Not Shown)	9ST13260-4	1	X	X	X	X	X				
14	Output Terminal Decal (Not Shown)	9SS19629	1	X	•	•	•	•				
14	Output Terminal Decal (Not Shown)	9SS20641	1	•	X	X	X	X				
15A	Number Plate	9SS17160	1	X	X	X	X	X				
15B	Self Tapping Screw	9SS8025-15	2	X	X	X	X	X				
15C	Self Tapping Screw	9SS8025-62	2	X	X	X	X	X				
16	Terminal Strip Gasket (Not Shown)	9ST14689	1	X	X	X	X	X				

Indicates a change this printing.

Use only the parts marked "x" in the column under the heading number called for in the model index page.

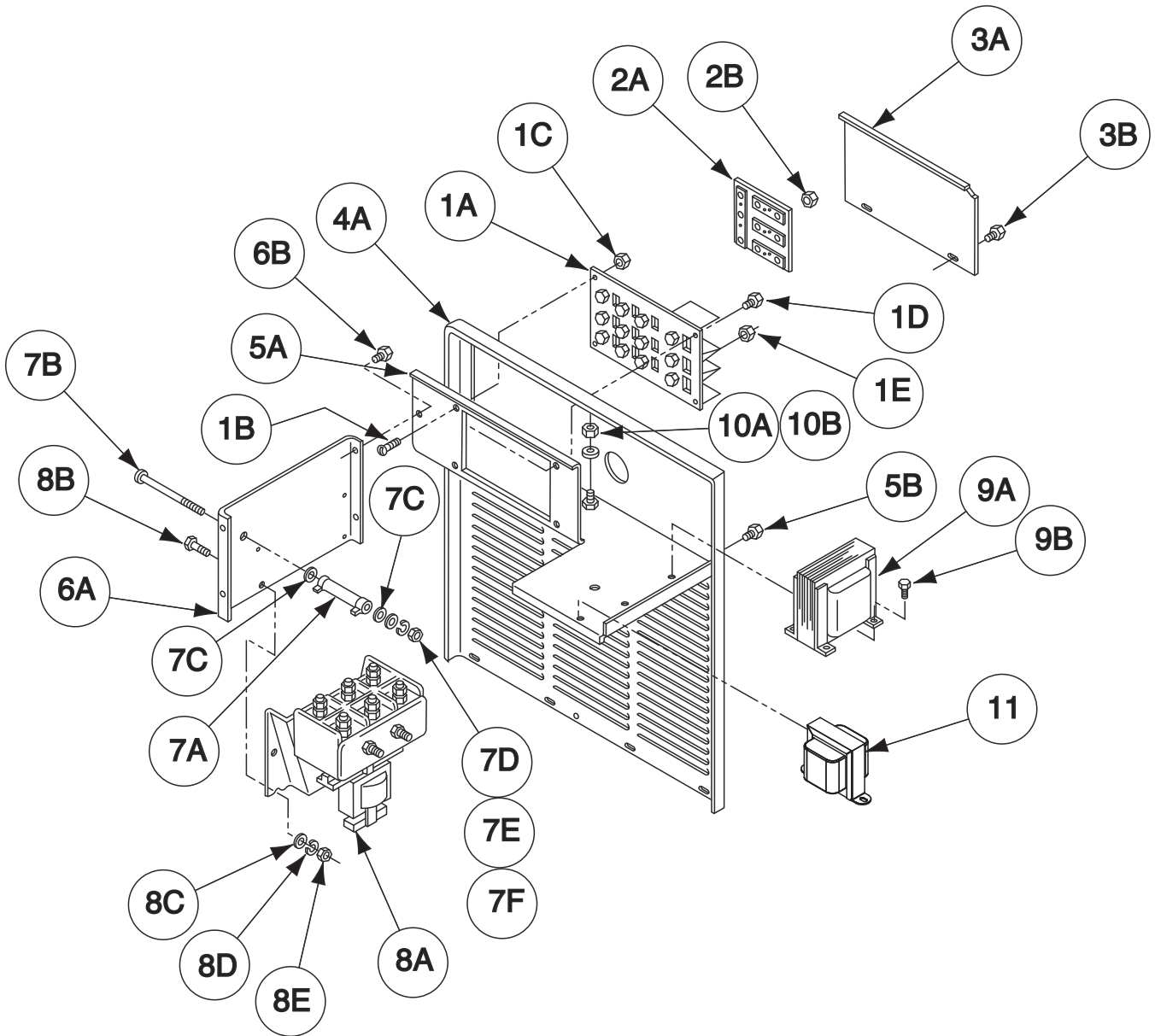
ITEM	DESCRIPTION	PART NO.	QTY.	1	2	3	4	5	6	7	8	9
17	Terminal Strip (6 Terminals)	9SS8542-7	1	X	X	X	X	X				
18	Terminal Strip (5 Terminals)	9SS14530-11	1	X	X	X	X	X				
19	Control Box Cover (Not Shown)	9SL9000	1	•	X	X	X	X				
19	Control Box Cover (Not Shown)	9SL6601 Ø	1	X	•	•	•	•				
20A	Nameplate (without Meters)	9SL5961	1	X	•	•	•	•				
20A	Nameplate (without Meters)	9SL8237	1	•	X	•	X	•				
20A	Nameplate (with Meters)	9SL5961-1 Ø	1	X	•	•	•	•				
20A	Nameplate (with Meters)	9SL8237-1	1	•	X	•	X	•				
20A	Nameplate (with Meters)	9SL8237-2	1	•	•	X	•	X				
20B	Self Tapping Screw (Not Shown)	9SS8025-91	9	X	X	X	X	X				
21A	Push Button Assembly	9SM6574-A	1	X	X	X	X	X				
21B	#10-24 x 2.00 RHS (Not Shown)	9SCF000104	2	X	X	X	X	X				
21C	Lock Washer (Not Shown)	9SE106A-1	2	X	X	X	X	X				
21D	#10-24 Square Nut (Not Shown)	9SCF000154	2	X	X	X	X	X				
21E	#6-32 x .375 PRHS (Not Shown)	9SCF000108	5	X	X	X	X	X				
21F	Bottom Cover	9ST8660	1	X	X	X	X	X				
22	Output Control Switch	9ST10800-39	1	•	X	X	X	X				
22	Output Control Switch	9ST11160	1	X	•	•	•	•				
23A	Fuse Holder	9SS10433-1	1	X	X	X	X	X				
23B	Fuse	9ST10728-16	1	X	X	X	X	X				
24	Welding Mode Switch (SW4)	9ST13381-4	1	X	X	X	X	X				
25	Output Control Potentiometer (R1)	9ST10812-122	1	X	X	X	X	X				
26	Potentiometer Insulation	9ST12792-1	1	X	X	X	X	X				
27	Knob	9ST10491	1	X	X	X	X	X				
28	Control Circuit Polarity Switch	9ST13562-1	1	X	•	•	X	X				
28	Control Circuit Polarity Switch	9ST10800-35	1	•	X	X	•	•				
29	Pilot Light	9ST13486	1	X	X	X	X	X				
30A	D.C. Ammeter (Optional)	9SM10485-13	1	X	X	X	•	•				
30A	D.C. Ammeter (Optional)	9SM20968-3	1	•	•	•	X	X				
30B	Plain Washer (Not Shown)	9SS9262-39	4	X	X	X	X	X				
30C	#4-40 HN (Not Shown)	9SCF000002	4	•	•	•	X	X				
30D	Lock Washer (Not Shown)	9ST4291-B	4	•	•	•	X	X				
31A	D.C. Voltmeter (Optional)	9SM10486-3	1	X	X	X	•	•				
31A	D.C. Voltmeter (Optional)	9SM20967-1	1	•	•	•	X	X				
31B	Plain Washer (Not Shown)	9SS9262-39	4	X	X	X	X	X				
31C	#4-40 HN (Not Shown)	9SCF000002	4	•	•	•	X	X				
31D	Lock Washer (Not Shown)	9ST4291-B	4	•	•	•	X	X				
32	Plug Button	9ST13597-1	1	X	X	X	X	X				
32	Box Connector (Earlier Machines)	9ST9639-2	1	X	•	•	•	•				
33	Box Connector	9ST9639-1	1	X	X	X	X	X				
34A	Access Door	9SS17293	1	X	X	X	X	X				
34B	Self Tapping Screw	9SS8025-65	3	X	X	X	X	X				
35	Meter Spacer (Not Shown)	9SS27359	2	•	•	•	X	X				

NOTES

IDEALARC® DC-1000



Case Back Assembly



Indicates a change this printing.

Use only the parts marked "x" in the column under the heading number called for in the model index page.

ITEM	DESCRIPTION	PART NO.	QTY.	1	2	3	4	5	6	7	8	9
1A	Stationary Reconnect Panel (Not Shown) Single & Dual (Includes: Hardware) Except 380/500 & 460/575	9SM13544	1	X	X							
1A	Stationary Reconnect Panel, 380 & 220/380/440	9SM14354	1	X	X							
1B	Self Tapping Screw	9SS8025-92	3	X	X							
1C	Set Screw	9ST10082-3	1	X	X							
1D	#10-24 HN	9SCF000010	1	X	X							
1E	3/8-16 HJN	9ST10940-4	3	X	X							
1F	Plain Washer (Not Shown)	9SS9262-4	3	X	X							
2A	Moveable Reconnect Panel, Single & Dual Except 380/500 and 460/575 Only	9SS16215	1	X	X							
2A	Moveable Reconnect Panel, 380/500 Volt Panel Link, 380 and 220/380/400 Only Primary Connection Lead	9SS17348	1	X	X							
	Thread Forming Screw	9ST14190	9	X	X							
	Plain Washer	9ST14723	4	X	X							
	Lock Washer	9SCF000017	13	X	X							
	1/4-20 x .50 HHCS	9SS9262-98	22	X	X							
	1/4-20 HN	9SE106A-2	13	X	X							
		9SCF000012	4	X	X							
		9SCF000017	4	X	X							
2B	3/8-16 HN	9SCF000067	9	X	X							
3A	Access Door (Gray)	9SM13448	1	X	X							
	Access Door (Red)	9SM13448-2	1	X	X							
3B	Self Tapping Screw	9SS8025-65	2	X	X							
4A	Rear Panel (Gray) (Below Code 9900)	9SS16223 \emptyset	1	X	X							
4A	Rear Panel (Red) (Above Code 9900)	9SS16223-1	1	X	X							
4B	Self Tapping Screw	9SS8025-65	8	X	X							
5A	Input Box	9SL5951	1	X	X							
5B	Self Tapping Screw	9SS8025-65	3	X	X							
6A	Contactor Mounting Panel	9SM13589	1	X	X							
6B	Thread Forming Screw	9SS9225-8	4	X	X							
7A	Resistor	9SS10404-83	1	X	X							
7B	#10-24 x 5.00 RHS	9SCF000045	1	X	X							
7C	Insulating Washer	9SS10773-7	2	X	X							
7D	Plain Washer	9SS9262-27	1	X	X							
7E	Lock Washer	9SE106A-1	1	X	X							
7F	#10-24 HN	9SCF000010	1	X	X							
8A	S-78 Contactor (Less NVR Coil) L6200-36 Contactor Parts	9SL6200-36A	1	X	X							
	NVR Coil	See P-28-J S1-9	1	X	X							
8B	1/4-20 x .625 HHCS	9SCF000013	4	X	X							
8C	Plain Washer	9SS9262-98	2	X	X							
8D	Lock Washer	9SE106A-2	4	X	X							
8E	1/4-20 HN	9SCF000017	4	X	X							
9A	Control Transformer (Codes 8631, 8632, 8641, 8687, 8795, 8961, 8964, 9099, 9572, 9919, 11331, 11682)	9SM12390-21	1	X	X							
9A	Control Transformer (Codes 8640, 8642, 8796, 9098, 9337, 9574, 9622, 9921, 9924, 11305, 11334, 11684)	9SS17228	1	X	X							
9A	Control Transformer (Codes 8644, 8797, 9609, 9623, 9923, 9925, 11330, 11681)	9SS17286	1	X	X							
9A	Control Transformer (Codes 8656, 8981, 9475, 9573, 9920, 11332, 11683)	9SS17292	1	X	X							

Indicates a change this printing.

Use only the parts marked "x" in the column under the heading number called for in the model index page.

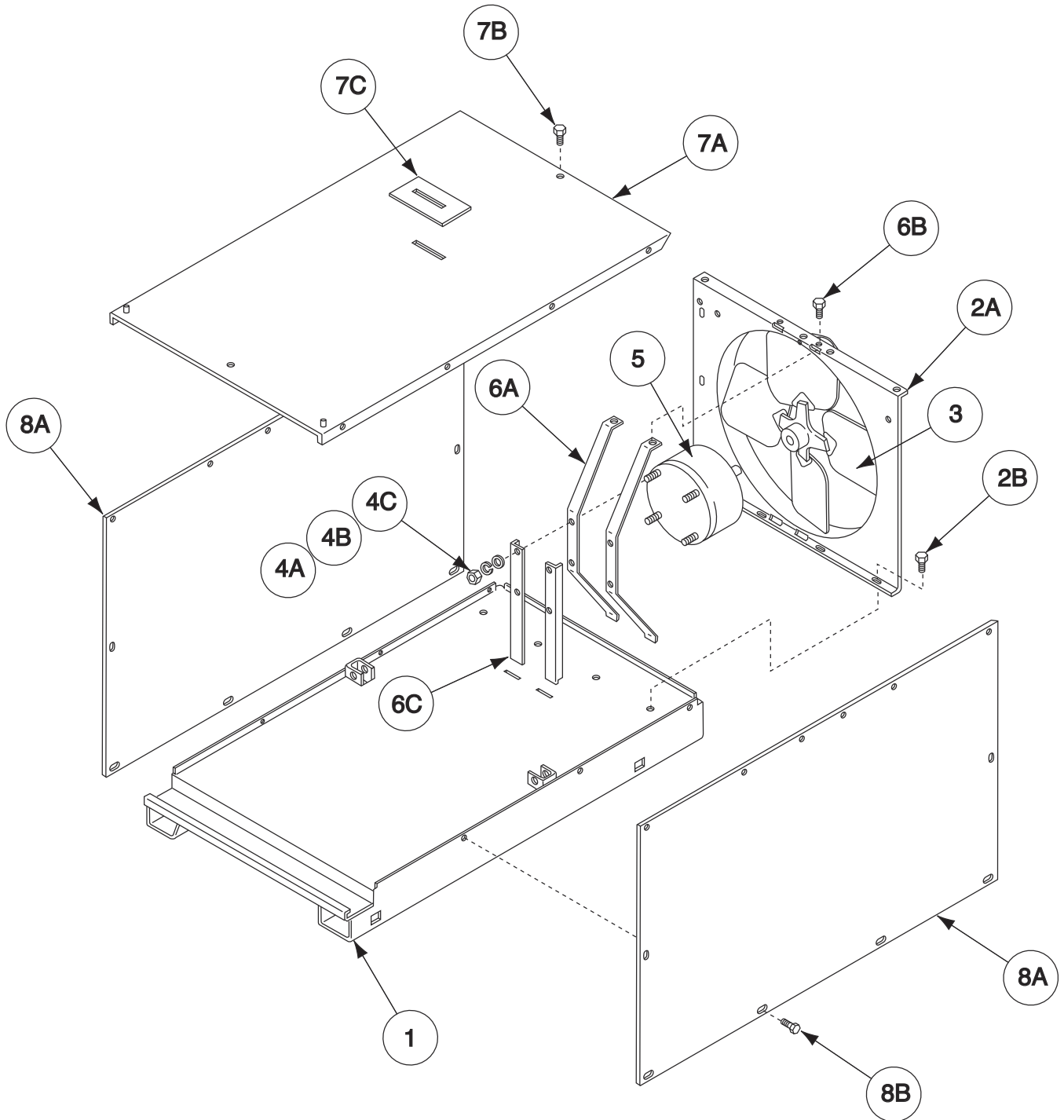
ITEM	DESCRIPTION	PART NO.	QTY.	1	2	3	4	5	6	7	8	9
9A	Control Transformer (Codes 8721, 8905, 9575, 9922, 10293, 11333)	9SS17343	1	X	-							
9A	Control Transformer (Codes 8812 & 9151)	9SS17535 \emptyset	1	X	X							
9B	Self Tapping Screw	9SS8025-65	4	X	X							
10A	Plain Washer	9SS9262-121	2	X	X							
10B	5/16-18 HN	9SCF000029	1	X	X							
11	Isolation Transformer (Codes 11681, 11682, 11683, 11684)	9SS27995	1	-	X							

NOTES

IDEALARC® DC-1000



Base, Fan, Roof and Case Sides

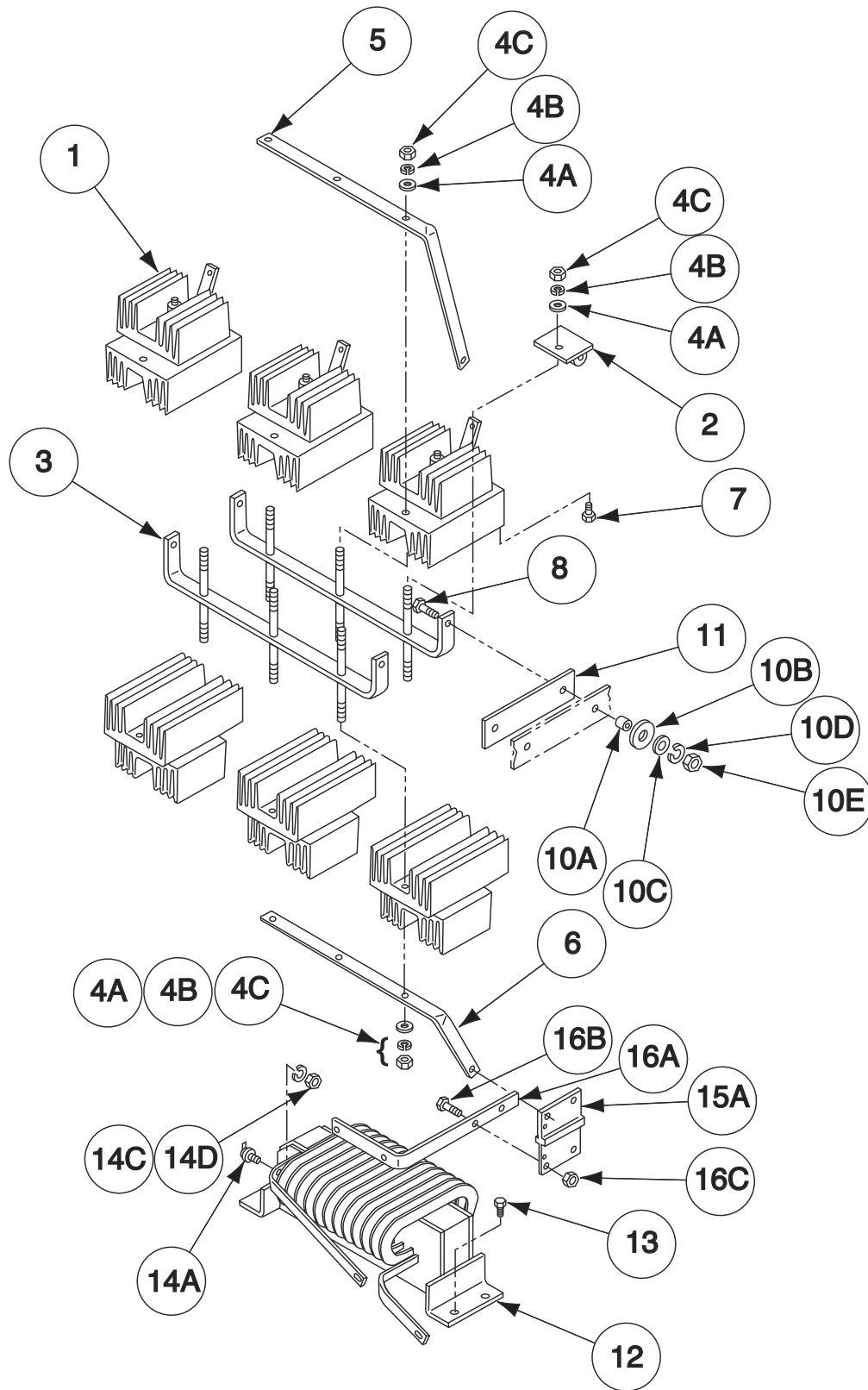


Indicates a change this printing.

Use only the parts marked "x" in the column under the heading number called for in the model index page.

ITEM	DESCRIPTION	PART NO.	QTY.	1	2	3	4	5	6	7	8	9
1	Base Welded Assembly (Below Code 9900)	9SL6598 ∅	1	X								
1	Base Welded Assembly (Above Code 9900)	9SL6598-1	1	X								
2A	Fan Baffle	9SL6247	1	X								
2B	Self Tapping Screw	9SS8025-65	4	X								
3	Fan Blade	9SM6819-12	1	X								
4A	#10-32 HN	9SCF000011	4	X								
	#8-32 HN	9SCF000042	4	X								
4B	Lock Washer (T9695-1)	9SE106A-1	4	X								
4C	Plain Washer	9SS9262-27	4	X								
5	Fan Motor (Includes Items 4A, 4B & 4C)	9SM9983-6	1	X								
6A	Fan Motor Mounting Bracket	9SM16525 ∅	2	X								
	Fan Motor Mounting Bracket	9SM16525-2	2	X								
6B	Self Tapping Screw	9SS8025-110	2	X								
6C	Fan Motor Bracket Brace (L9009)	(Not Available)	2	X								
7A*	Roof (Below Code 9900)	9SM12352-6 ∅	1	X								
7A*	Roof (Above Code 9900)	9SM12352-17	1	X								
7B	Self Tapping Screw	9SS8025-65	10	X								
7C	Cover Seal	9SS12934	1	X								
8A*	Case Side (Below Code 9900)	9SM14065-3	2	X								
8A*	Case Side (Above Code 9900)	9SM14065-8	2	X								
8B	Self Tapping Screw	9SS8025-65	12	X								
<p>* When placing an Order, Identify by Color.</p>												

Output Rectifier & Choke Assembly

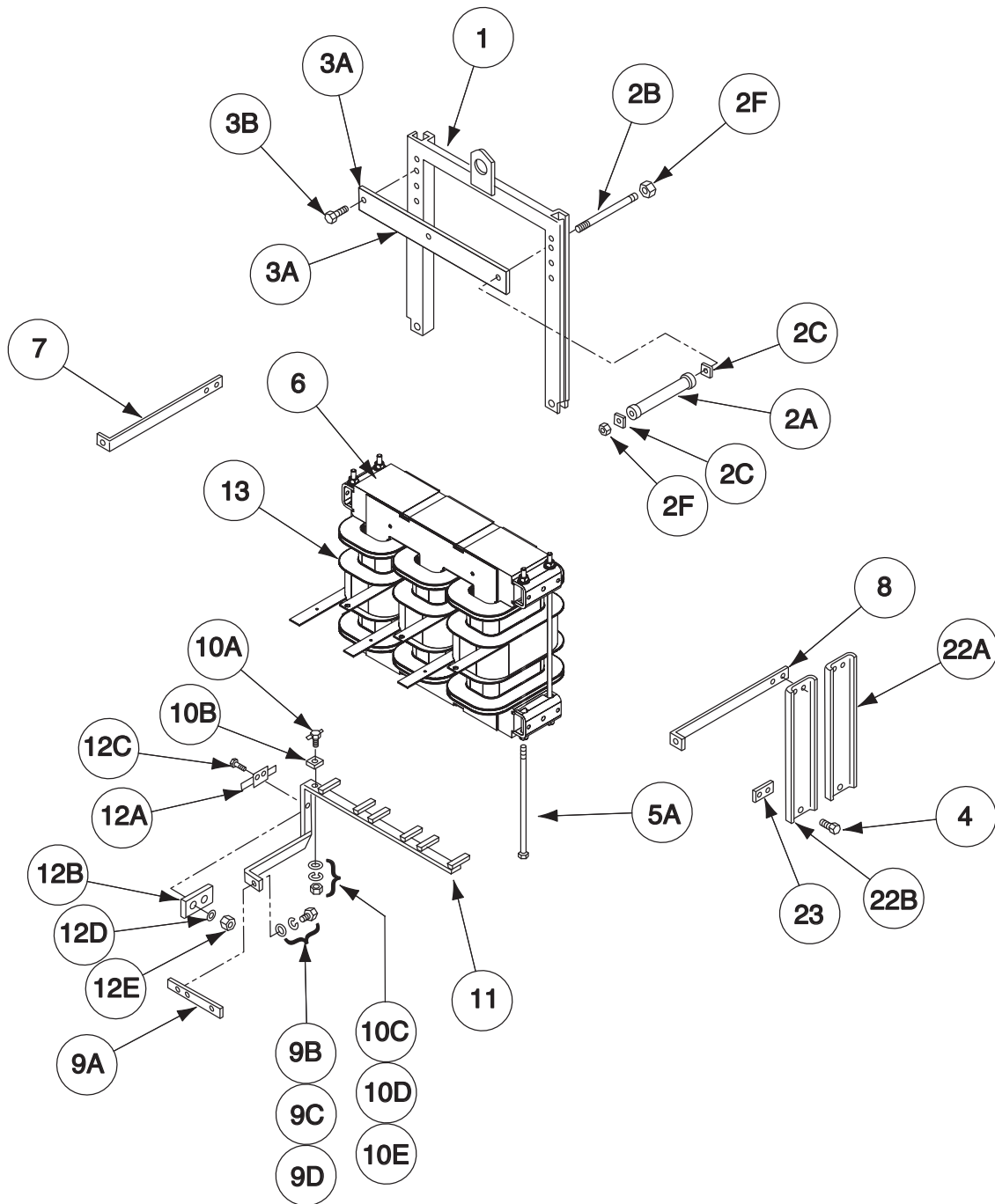


Indicates a change this printing.

Use only the parts marked "x" in the column under the heading number called for in the model index page.

ITEM	DESCRIPTION	PART NO.	QTY.	1	2	3	4	5	6	7	8	9
	Output Rectifier Asbly, Includes: (Above Code 9900)	9SM16986	1	X								
	Output Rectifier Asbly, Includes: (Between Codes 9500 & 9900)	9SM16229 \emptyset	1	X								
	Output Rectifier Asbly, Includes: (Codes Below 9500)	9SM14605 \emptyset	1	X								
1	SCR Heat Sink Assembly (Above Code 9900)	9SM14604-1	6	X								
1	SCR Heat Sink Assembly (Below Code 9500)	9SM14604	3	X								
1	SCR Heat Sink Assembly (Between Codes 9500 & 9900)	9SM16228	3	X								
2	Snubber Asbly	9SS17163	6	X								
3	Heat Sink Mounting Bracket Asbly	9SS17154	2	X								
4A	Plain Washer	9SS9262-4	12	X								
4B	Lock Washer	9SE106A-16	12	X								
4C	3/8-16 HN	9SCF000067	12	X								
5	Lead	9SM14286-3	1	X								
6	Lead	9SM14286-4	1	X								
7	Self Tapping Screw	9SS8025-12	7	X								
8	3/8-16 x 1.25 HHCS	9SCF000105	4	X								
9	Plug & Lead Assembly (J4) (Not Shown)	9SS18250-270	1	X								
10A	Insulating Tube	9ST7028-205	4	X								
10B	Insulating Washer	9SS10773-19	4	X								
10C	Plain Washer	9SS9262-4	4	X								
10D	Lock Washer	9SE106A-16	4	X								
10E	3/8-16 HN	9SCF000067	4	X								
11	Insulation	9ST11357-17	2	X								
12	Choke Assembly (Below Code 9900)	9SL8229 \emptyset	1	X								
12	Choke Assembly (Above Code 9900)	9SL9007	1	X								
13	Thread Forming Screw	9SS9225-26	4	X								
14A	Thermostat (Choke)	9ST13359-8	1	X								
14B	Plain Washer (Not Shown)	9SS9262-3	1	X								
14C	Lock Washer	9SE106A-13	1	X								
14D	#6-32 HN	9SCF000005	1	X								
15A	Shunt Assembly	9SS17152	1	X								
15B	3/8-16 x .625 HHCS (Not Shown)	9SCF000018	2	X								
15C	3/8-16 HN (Not Shown)	9SCF0000315	2	X								
16A	Lead (Shunt to Output Stud)	9SM16987	1	X								
16B	3/8-16 x .75 HHCS	9SCF000034	2	X								
16C	3/8-16 HN	9SCF000067	2	X								

Lift Bale & Transformer Assembly



Indicates a change this printing.

Use only the parts marked "x" in the column under the heading number called for in the model index page.

ITEM	DESCRIPTION	PART NO.	QTY.	1	2	3	4	5	6	7	8	9
1	Lift Bale Assembly	9SL6600	1	X								
2A	Resistor (R2)	9SS10404-118	1	X								
2B	Mounting Stud	9ST9781-34	1	X								
2C	Insulating Washer	9ST9764-6	2	X								
2D	Plain Washer (Not Shown)	9SS9262-98	1	X								
2E	Lock Washer (Not Shown)	9SE106A-2	1	X								
2F	1/4-20 HN	9SCF000017	2	X								
3A	Lift Bale Baffle	9SS17301	1	X								
3B	Thread Forming Screw	9SS9225-26	1	X								
4	Thread Forming Screw	9SS9225-26	16	X								
5A	Mounting Stud	9ST9781-45	6	X								
5B	Lock Washer (Not Shown)	9SE106A-5	6	X								
5C	1/2-13 HN (Not Shown)	9SCF000027	12	X								
6	Lamination Assembly	NSS	2	X								
7	Output Rectifier Mounting Bracket	9SM14292-1	1	X								
8	Output Rectifier Mounting Bracket	9SM14292-2	1	X								
9A	Output Stud jumper	9SS20646	1	X								
9B	Plain Washer	9SS9262-1	1	X								
9C	Lock Washer	9SE106A-15	1	X								
9D	1/2-13 x .875 HHCS	9SCF000344	1	X								
10A	Thermostat (Secondary)	9ST13359-2	1	X								
10B	Insulation	9ST14779	1	X								
10C	Plain Washer	9SS9262-3	1	X								
10D	Lock Washer	9SE106A-13	1	X								
10E	#6-32 HN	9SCF000005	1	X								
11	Negative Output Lead (Above Code 9900)	9SM16988	1	X								
11	Negative Output Lead (Below Code 9900)	9SS19618 \emptyset	1	X								
12A	Reed Switch (3CR)	9SS12334-53	1	X								
12B	Reed Switch Plate	9SS11797-15	1	X								
12C	#8-32 x .75 RHS	9SCF000096	2	X								
12D	Lock Washer	9ST4291-A	2	X								
12E	#8-32 HN	9SCF000042	2	X								
12F	Identification Sticker (Not Shown)	9ST12286-3	1	X								
12G	Clamp (Not Shown)	9ST8970-17	2	X								
	(Codes 8631 & 8795) (230/460)											
	Wiring Diagram	9SL6634	1	X								
	Input Connection Diagram	9SS17172	1	X								
	Transformer & Lift Bale Asbly (Includes Item 1 & 13)	L6616-1/8631	1	X								
13	Complete Transformer Assembly	NSS	1	X								
	(Codes 8632 & 8964) (220/440)											
	Wiring Diagram	9SL6634	1	X								
	Input Connection Diagram	9SS17172	1	X								
	Transformer & Lift Bale Asbly (Includes Item 1 & 13)	L6616-1/8631	1	X								
13	Complete Transformer Assembly	NSS	1	X								
	(Codes 8640 & 8796) (220/380/440)											
	Wiring Diagram	9SL6634	1	X								
	Input Connection Diagram	9SM14358	1	X								
	Transformer & Lift Bale Asbly (Includes Item 1 & 13)	L6616-2/8640	1	X								
13	Complete Transformer Assembly	NSS	1	X								

NSS - Not Sold Separately

IDEALARC® DC-1000

07-20-2011

\emptyset This part is obsolete and no longer available.



Indicates a change this printing.

Use only the parts marked "x" in the column under the heading number called for in the model index page.

ITEM	DESCRIPTION	PART NO.	QTY.	1	2	3	4	5	6	7	8	9
13	(Codes 8641 & 8961) (460)											
	Wiring Diagram	9SL6634	1	X								
	Input Connection Diagram	9SS17172	1	X								
	Transformer & Lift Bale Asbly (Includes Item 1 & 13) Complete Transformer Assembly	L6616-1/8631 NSS	1 1	X X								
13	(Code 8642) (380)											
	Wiring Diagram	9SL6634	1	X								
	Input Connection Diagram	9SS17231	1	X								
	Transformer & Lift Bale Asbly (Includes Item 1 & 13) Complete Transformer Assembly	L6616-2/8640 NSS	1 1	X X								
13	(Code 8644) (415)											
	Wiring Diagram	9SL6634	1	X								
	Input Connection Diagram	9SS17172	1	X								
	Transformer & Lift Bale Asbly (Includes Item 1 & 13) Complete Transformer Assembly	L6616-1/8644 NSS	1 1	X X								
13	(Codes 8656 & 8981) (575)											
	Wiring Diagram	9SL6634	1	X								
	Input Connection Diagram	9SS17172	1	X								
	Transformer & Lift Bale Asbly (Includes Item 1 & 13) Complete Transformer Assembly	L6616-1/8656 NSS	1 1	X X								
13	(Code 8687) (220)											
	Wiring Diagram	9SL6634	1	X								
	Input Connection Diagram	9SS17172	1	X								
	Transformer & Lift Bale Asbly (Includes Item 1 & 13) Complete Transformer Assembly	L6616-1/8631 NSS	1 1	X X								
13	(Codes 8721 & 8905) (380/500)											
	Wiring Diagram	9SL6634	1	X								
	Input Connection Diagram	9SS17344	1	X								
	Transformer & Lift Bale Asbly (Includes Item 1 & 13) Complete Transformer Assembly	L6616-3/8721 NSS	1 1	X X								
13	(Code 8797) (460)											
	Wiring Diagram	9SL6634	1	X								
	Input Connection Diagram	9SS17172	1	X								
	Transformer & Lift Bale Asbly (Includes Item 1 & 13) Complete Transformer Assembly	L6616-1/8644 NSS	1 1	X X								
13	(Codes 8812 & 9151) (260)											
	Wiring Diagram	9SL6634	1	X								
	Input Connection Diagram	9SS17172	1	X								
	Transformer & Lift Bale Asbly (Includes Item 1 & 13) Complete Transformer Assembly	L6616-1/8812 NSS	1 1	X X								
13	(Code 9098) (380)											
	Wiring Diagram	9SL6634	1	X								
	Input Connection Diagram	9SS17231	1	X								
	Transformer & Lift Bale Asbly (Includes Item 1 & 13) Complete Transformer Assembly	L6616-2/9098 NSS	1 1	X X								
13	Code (9099) (460)											
	Wiring Diagram	9SL6634	1	X								
	Input Connection Diagram	9SS17172	1	X								
	Transformer & Lift Bale Asbly (Includes Item 1 & 13) Complete Transformer Assembly	L6616-1/9099 NSS	1 1	X X								



Indicates a change this printing.

Use only the parts marked "x" in the column under the heading number called for in the model index page.

ITEM	DESCRIPTION	PART NO.	QTY.	1	2	3	4	5	6	7	8	9
13	(Code 9337) (380)											
	Wiring Diagram	9SL6634	1	X								
	Input Connection Diagram	9SS17231	1	X								
	Transformer & Lift Bale Asbly (Includes Item 1 & 13) Complete Transformer Assembly	L6616-2/8640 NSS	1 1	X X								
13	(Code 9475) (550)											
	Wiring Diagram	9SL6634	1	X								
	Input Connection Diagram	9SS17172	1	X								
	Transformer & Lift Bale Asbly (Includes Item 1 & 13) Complete Transformer Assembly	L6616-1/8656 NSS	1 1	X X								
13	(Code 9572) (230/460)											
	Wiring Diagram	9SL8234	1	X								
	Input Connection Diagram	9SS17172	1	X								
	Transformer & Lift Bale Asbly (Includes Item 1 & 13) Complete Transformer Assembly	L6616-1/8631 NSS	1 1	X X								
13	(Code 9573) (575)											
	Wiring Diagram	9SL8234	1	X								
	Input Connection Diagram	9SS17172	1	X								
	Transformer & Lift Bale Asbly (Includes Item 1 & 13) Complete Transformer Assembly	L6616-1/8656 NSS	1 1	X X								
13	(Codes 9574 & 9622) (220/380/440)											
	Wiring Diagram	9SL8234	1	X								
	Input Connection Diagram	9SM14358	1	X								
	Transformer & Lift Bale Asbly (Includes Item 1 & 13) Complete Transformer Assembly	L6616-2/8640 NSS	1 1	X X								
13	(Code 9575) (380/500)											
	Wiring Diagram	9SL8234	1	X								
	Input Connection Diagram	9SS17344	1	X								
	Transformer & Lift Bale Asbly (Includes Item 1 & 13) Complete Transformer Assembly	L6616-3/8721 NSS	1 1	X X								
13	(Codes 9609 & 9623) (415)											
	Wiring Diagram	9SL8234	1	X								
	Input Connection Diagram	9SS17172	1	X								
	Transformer & Lift Bale Asbly (Includes Item 1 & 13) Complete Transformer Assembly	L6616-1/8644 NSS	1 1	X X								
13	(Codes 9919 & 11331) (230/460)											#
	Wiring Diagram	9SL9008	1	X								
	Input Connection Diagram	9SS17172	1	X								
	Transformer & Lift Bale Asbly (Includes Item 1 & 13) Complete Transformer Assembly	L6616-4/8631 NSS	1 1	X X								
13	(Codes 9920 & 11332) (575)											#
	Wiring Diagram	9SL9008	1	X								
	Input Connection Diagram	9SS17172	1	X								
	Transformer & Lift Bale Asbly (Includes Item 1 & 13) Complete Transformer Assembly	L6616-4/8656 NSS	1 1	X X								
13	(Codes 9921, 11305 & 11334) (220/380/440)											#
	Wiring Diagram	9SL9008	1	X								
	Input Connection Diagram	9SM14358	1	X								
	Transformer & Lift Bale Asbly (Includes Item 1 & 13) Complete Transformer Assembly	L6616-5/8640 NSS	1 1	X X								



Indicates a change this printing.

Use only the parts marked "x" in the column under the heading number called for in the model index page.

ITEM	DESCRIPTION	PART NO.	QTY.	1	2	3	4	5	6	7	8	9
13	(Codes 9922 & 11333) (380/500)											
	Wiring Diagram	9SL9008	1	X								
	Input Connection Diagram	9SS17344	1	X								
	Transformer & Lift Bale Asbly (Includes Item 1 & 13) Complete Transformer Assembly	L6616-6/8721 NSS	1 1	X X								
13	(Codes 9923, 9925 & 11330) (415)											
	Wiring Diagram	9SL9008	1	X								
	Input Connection Diagram	9SS17172	1	X								
	Transformer & Lift Bale Asbly (Includes Item 1 & 13) Complete Transformer Assembly	L6616-4/8644 NSS	1 1	X X								
13	(Code 9924) (220/380/440)											#
	Wiring Diagram	9SL9008	1	X								
	Input Connection Diagram	9SM14358	1	X								
	Transformer & Lift Bale Asbly (Includes Item 1 & 13) Complete Transformer Assembly	L6616-5/8640 NSS	1 1	X X								
13	(Code 10293M) (380/500)											
	Wiring Diagram	9SL9008	1	X								
	Input Connection Diagram	9SS17344	1	X								
	Transformer & Lift Bale Asbly (Includes Item 1 & 13) Complete Transformer Assembly	L6616-6/8721 NSS	1 1	X X								
13	(Code 11681) (415)											#
	Wiring Diagram	9SL9008-1	1	X								
	Input Connection Diagram	9SS17172	1	X								
	Transformer & Lift Bale Asbly (Includes Item 1 & 13) Complete Transformer Assembly	9SL6616-8 NSS	1 1	X X								
13	(Code 11682) (230/460)											#
	Wiring Diagram	9SL9008-1	1	X								
	Input Connection Diagram	9SS17172	1	X								
	Transformer & Lift Bale Asbly (Includes Item 1 & 13) Complete Transformer Assembly	9SL6616-7 NSS	1 1	X X								
13	(Code 11683) (575)											#
	Wiring Diagram	9SL9008-1	1	X								
	Input Connection Diagram	9SS17172	1	X								
	Transformer & Lift Bale Asbly (Includes Item 1 & 13) Complete Transformer Assembly	9SL6616-9 NSS	1 1	X X								
13	(Code 11684) (220/380/440)											
	Wiring Diagram	9SL9008-1	1	X								
	Input Connection Diagram	9SM14358	1	X								
	Transformer & Lift Bale Asbly (Includes Item 1 & 13) Complete Transformer Assembly	L6616-5/8640 NSS	1 1	X X								
21	Primary Secondary Insulation (Not Shown)	9SS16333	6	X								
22A	Transformer Side Bracket	9SS17156-1	2	X								
22B	Transformer Side Bracket	9SS17156-2	2	X								
23	Misc. Flat	9SS16090-3	2	X								



+COLUMN NUMBER AS SPECIFIED ON “MODEL INDEX” PAGE FOR EACH MACHINE

TABLE A									
COL. NO.	S78 STARTER	SUPERSEDED S67 STARTER	ITEM 9 STA. INTER-LOCK CONTACT	ITEM 10 STA. INTER-LOCK CONTACT	MOVING CONTACTOR ASSEMBLY	ITEM 13A MOVING INTERLOCK	ITEM 13B MOVING INTERLOCK	MAIN CONTACT BLOCK	OTHER PARTS TABLE B
1	L6200-1A	L4300-1A	•	T9453 N.O.	M6893-65 Ø	T9036	•	M13866-1	Col. A
2	L6200-2A Ø	L4300-2A	T12332 N.C.	T9453 N.O.	M6893-47	T9036	T12324	M13866-2	Col. B
3	L6200-3A	L4300-3A	•	•	M6893-64	•	•	M13866-7	Col. C
4	L6200-4A	L4300-4A	•	•	M6893-43	•	•	M13866-3	Col. D
5	L6200-5A	L4300-5A	T12332 N.C.	T12332 N.C.	M6893-48	T12324-1	T12324-1	M13866-7	Col. E
6	L6200-6A	L4300-6A	T12332 N.C.	T12332 N.C.	M6893-48	T12324-1	T12324-1	M13866-7	Col. E
7	L6200-7A	L4300-7A	T9033 N.O.	T9033 N.O.	M6893-49	T12323-1 Ø	T12323-1 Ø	M13866-4	Col. F
8	L6200-10A	L4300-10A	•	T9453 N.O.	M6893-51	T9036	•	M13866-5	Col. G
9	L6200-11A Ø	L4300-11A	T9453 N.O.	T9453 N.O.	M6893-52	T9036	T9036	M13866-1	Col. A
10	L6200-12A Ø	L4300-12A	•	T12332 N.C.	M6893-53	T12324	•	M13866-6	Col. H
11	L6200-13A	L4300-13A	•	T9453 N.O.	M6893-65 Ø	T9036	•	M13866-7	Col. E
12	L6200-14A	L4300-14A	•	T9033 N.O.	M6893-54	T9036	•	M13866-6	Col. H
13	L6200-15A	L4300-15A	•	T9033 N.O.	M6893-65 Ø	T9036	•	M13866-2	Col. H
14	L6200-16A	L4300-16A	•	•	M6893-44	•	•	M13866-4	Col. K
15	L6200-17A	L4300-17A	•	•	M6893-64	•	•	M13866-2	Col. L
16	L6200-18A	L4300-18A	•	T9453 N.O.	M6893-65 Ø	T9036	•	M13866-2	Col. B
17	L6200-19A Ø	L4300-19A	T12332 N.C.	T9033 N.O.	M6893-55	T13149	T12793-1 Ø	M13869	Col. B
18	L6200-20A	L4300-20A	T9033 N.O.	T12332 N.C.	M6893-56	T12793-1 Ø	T12323-1 Ø	M13866-4	Col. F
19	L6200-21A	L4300-21A	T9033 N.O.	T9033 N.O.	M6893-52	T9036	T9036	M13866-2	Col. M
20	L6200-22A	L4300-22A	T9453 N.O.	T12332 N.C.	M6893-57	T12324	T12323	M13866-6	Col. H
21	L6200-23A	L4300-23A	•	T9033 N.O.	M6893-65 Ø	T9036	•	M13866-1	Col. A
22	L6200-24A	L4300-24A	T9453 N.O.	•	M6893-66	•	T9036	M13866-2	Col. B
23	L6200-25A	L4300-25A	S14979 N.C.	S14979 N.C.	M6893-58	S15011	S15011	M13866-7	Col. E
24	L6200-26A	L4300-26A	T12332 N.C.	T9033 N.O.	M6893-59	T9036	T12793-1 Ø	M13866-7	Col. E
25	L6200-27A	L4300-27A	T12332 N.C.	T12332 N.C.	M6893-60	T12793-1 Ø	T12793-1 Ø	M13866-5	Col. G
26	L6200-28A	L4300-28A	S14979-2 N.C.	S14979-2 N.C.	M6893-58	S15011	S15011	M13866-7	Col. E
27	L6200-29A	L4300-29A	T12332 N.C.	T12332 N.C.	M6893-61	T12324-1	T12324-1	M13866-4	Col. N
28	L6200-30A Ø	L4300-30A	T9033 N.O.	T12332 N.C.	M6893-62	T12324-1	T9036	M13866-3	Col. P
29	L6200-31A	L4300-31A	T12332 N.C.	T9033 N.O.	M6893-63	T9036	T12793-1 Ø	M13866-3	Col. P
30	L6200-32A	L4300-32A	T9033 N.O.	•	M6893-46	•	T9036	M13866-3	Col. P
31	L6200-33A	L4300-33A	•	T9033 N.O.	M6893-45	T9036	•	M13866-3	Col. P
32	L6200-34A	L4300-34A	T12332 N.C.	T12332 N.C.	M6893-50	T12793-1 Ø	T12793-1 Ø	M13866-7	Col. E
33	L6200-35A	•	•	•	M6893-64	•	•	M13866-7	Col. C
34	L6200-36A	•	•	T9453 N.O.	M6893-45	T9036	•	M13866-8	Col. Q
35	L6200-37A	•	•	•	M6893-44	•	•	M13866-6	Col. F

Ø This part is obsolete and no longer available.



Index of Sub Assemblies
 Sub Assembly Illustration
 Index of Sub Assemblies
 Sub Assembly Illustration
 Index of Sub Assemblies
 Sub Assembly Illustration
 Index of Sub Assemblies
 Sub Assembly Illustration

TABLE B

Indicates a Change This Printing

Use only the parts marked "X" in the column under the heading number called for in the model index page.

ITEM	DESCRIPTION	PART NO.	QTY.	A	B	C	D	E	F	G	H	J	K	L	M	N	P	Q
1	S78 Starter Assembly, Includes: (Less NVR Coil)	See Table A	1	X	X	X	X	X	X	X	X	X	X	X	X	X	X	X
1	Moving Lamination Assembly	9SS12851	1	X	X	X	X	X	X	X	X	X	X	X	X	X	X	X
2	Screw (Lamination Mounting)	9ST9031	1	X	X	X	X	X	X	X	X	X	X	X	X	X	X	X
3	Lock Washer	9ST9695-1	1	X	X	X	X	X	X	X	X	X	X	X	X	X	X	X
3A	Lock Washer	9SE106A-1	1	X	X	X	X	X	X	X	X	X	X	X	X	X	X	X
3B	#10-32 HN	9SCF000011	1	X	X	X	X	X	X	X	X	X	X	X	X	X	X	X
4	NVR Coil (Not Included in L6200 Assembly)	See Winding Specs	1	X	X	X	X	X	X	X	X	X	X	X	X	X	X	X
5	Lamination & Mtg Panel Asbly (40 Hz & Over)	9SM6888-9	1	X	X	X	X	X	X	.	.	X	X	.	.	X	X	
5	Lamination & Mtg Panel Asbly (Under 40 Hz)	9SM6888-10	1	X	X	X	X	X	X	.	.	X	X	.	.	X	.	
5	Lamination & Mounting Panel Asbly	9SM6888-12	1	X	X	.	.	X	X	.	.	
	Plastic Insert	9SS10425	1	X	X	X	X	X	X	X	X	X	X	X	X	X	X	X
6	Contact Block Cover	9SM13771	1	X	X	X	X	X	X	X	X	X	X	X	X	X	X	X
7	Plain Washer	9SS9262-121	2	X	X	X	X	X	X	X	X	X	X	X	X	X	X	X
8	5/16-18 HLN	9ST9187	2	X	X	X	X	X	X	X	X	X	X	X	X	X	X	X
9	Stationary Interlock Contact Asbly	See Table A	1	X	X	X	X	X	X	X	X	X	X	X	X	X	X	X
10	Stationary Interlock Contact Asbly	See Table A	1	X	X	X	X	X	X	X	X	X	X	X	X	X	X	X
	Moving Contact Assembly, Includes	See Table A	1	X	X	X	X	X	X	X	X	X	X	X	X	X	X	X
12	Moving Contactor Block (3 pole)	9SM6892-D	1	X	X	X	X	.	.	.	X	.	X	.	X	.	X	.
12	Moving Contactor Block (2 pole)	9SM6892-E	1	X	X	.	X	.	.	X	.	.	.
13A	Moving Interlock Contact Assembly	See Table A	1	X	X	X	X	X	X	X	X	X	X	X	X	X	X	X
13B	Moving Interlock Contact Assembly	See Table A	1	X	X	X	X	X	X	X	X	X	X	X	X	X	X	X
14	#6-32 x .50 RHS	9SCF000004	As Req	X	X	.	.	X	X	X	X	.	.	X	X	X	X	
15	Spring (Main Contact)	9ST9029	As Req	X	X	X	X	X	X	X	X	X	X	X	X	X	X	X
16	Moving Contact	9ST9865-2R	As Req	.	.	.	X	X	X
16	Moving Contact	9ST9865-4	As Req	X	X	X	.	X	X	X	X	X	X	X	X	X	.	.
17	Lock Washer	9SE106A-13	As Req	X	X	.	.	X	X	X	X	.	.	X	X	X	X	X
18	Main Contact Block Assembly, Includes:	See Table A	1	X	X	X	X	X	X	X	X	X	X	X	X	X	X	X
18	Main Contact Block (Includes Item 6 M13771)	9SL6097	1	X	X	X	X	.	X	X	.	X	.	X
18	Main Contact Block	9SM13867	1	.	.	X	X	X	X	.	.	.	X	.	.	X	.	.
19	Main Stationary Contact	9ST14529	As Req	X	X	X	.	X	X	X	X	X	X	X	X	X	.	.
19	Main Stationary Contact	9SS8029-3	As Req	.	.	.	X	X
20A	3/8-16 BR HHJN	9ST10940-3	As Req	X	X	X	X	X	X	X	X	X	X	X	X	X	X	X
20B	3/8-16 HHJN	9ST10940-4	As Req	.	X	X	X	X	X	.	X	X	X	X	X	X	X	.

#



Index of Sub Assemblies
 Sub Assembly Illustration
 Index of Sub Assemblies
 Sub Assembly Illustration
 Index of Sub Assemblies
 Sub Assembly Illustration
 Index of Sub Assemblies
 Sub Assembly Illustration