

# PARTS LIST FOR

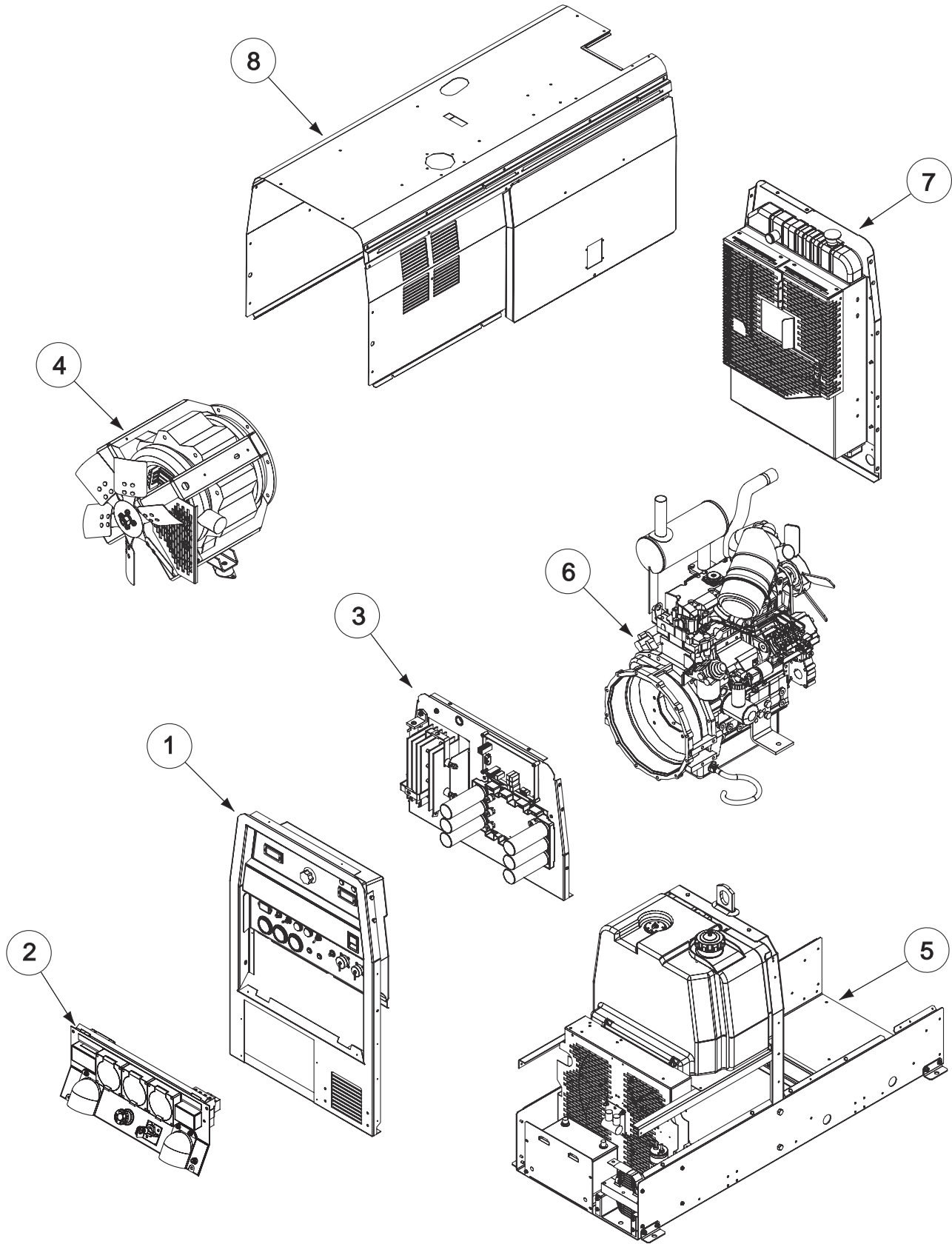
# Vantage<sup>®</sup> 580 (AU)

Index of Sub Assemblies  
Index of Sub Assemblies  
Index of Sub Assemblies  
Index of Sub Assemblies  
Index of Sub Assemblies  
Illustration of Sub Assemblies  
Illustration of Sub Assemblies  
Illustration of Sub Assemblies  
Illustration of Sub Assemblies

VANTAGE<sup>®</sup> 580 (AU)



# ILLUSTRATION OF SUB-ASSEMBLIES



Index of Sub Assemblies

# Vantage<sup>®</sup> 580 (AU)

## For Code: 11657

Do Not use this Parts List for a machine if its code number is not listed. Contact the Service Department for any code numbers not listed.

Use the Illustration of Sub-Assemblies page and the table below to determine which sub assembly page and column the desired part is located on for your particular code machine.

Sub Assembly Item No. ↔		1	2	3	4	5	6	7	8
SUB ASSEMBLY PAGE NAME ↔	Optional Equipment	Case Front & Control Panel Assembly	Output Panel Assembly	Power Module Panel Assembly	Generator & Rotor Assembly	Base, Fuel Tank & Battery Assembly	Engine Assembly	Case Back & Radiator Asbly	Enclosure Components
PAGE NO. →	P-657-B.1	P-657-C	P-657-D	P-657-E	P-657-F	P-657-G	P-657-H	P-657-J	P-657-K
CODE NO. ↓									
11657		1	1	1	1	1	1	1	1



Illustration of Sub Assemblies

# OPTIONAL EQUIPMENT LISTING

Miscellaneous Options Available for your machine are listed below:

# Indicates a change this printing.

DESCRIPTION .....	PART NUMBER
Accessory Package .....	Order K704
Spark Arrestor .....	Order K903-1
Remote Output Control (25 ft.) .....	Order K857
Remote Output Control (100 ft.) .....	Order K857-1
2 Wheel Trailer .....	Order K2636-1
Fender & Light Kit .....	Order K2639-1
Cable Storage Rack .....	Order K2640-1
4 Wheel Yard Trailer .....	Order K2641-2



Index of Sub Assemblies

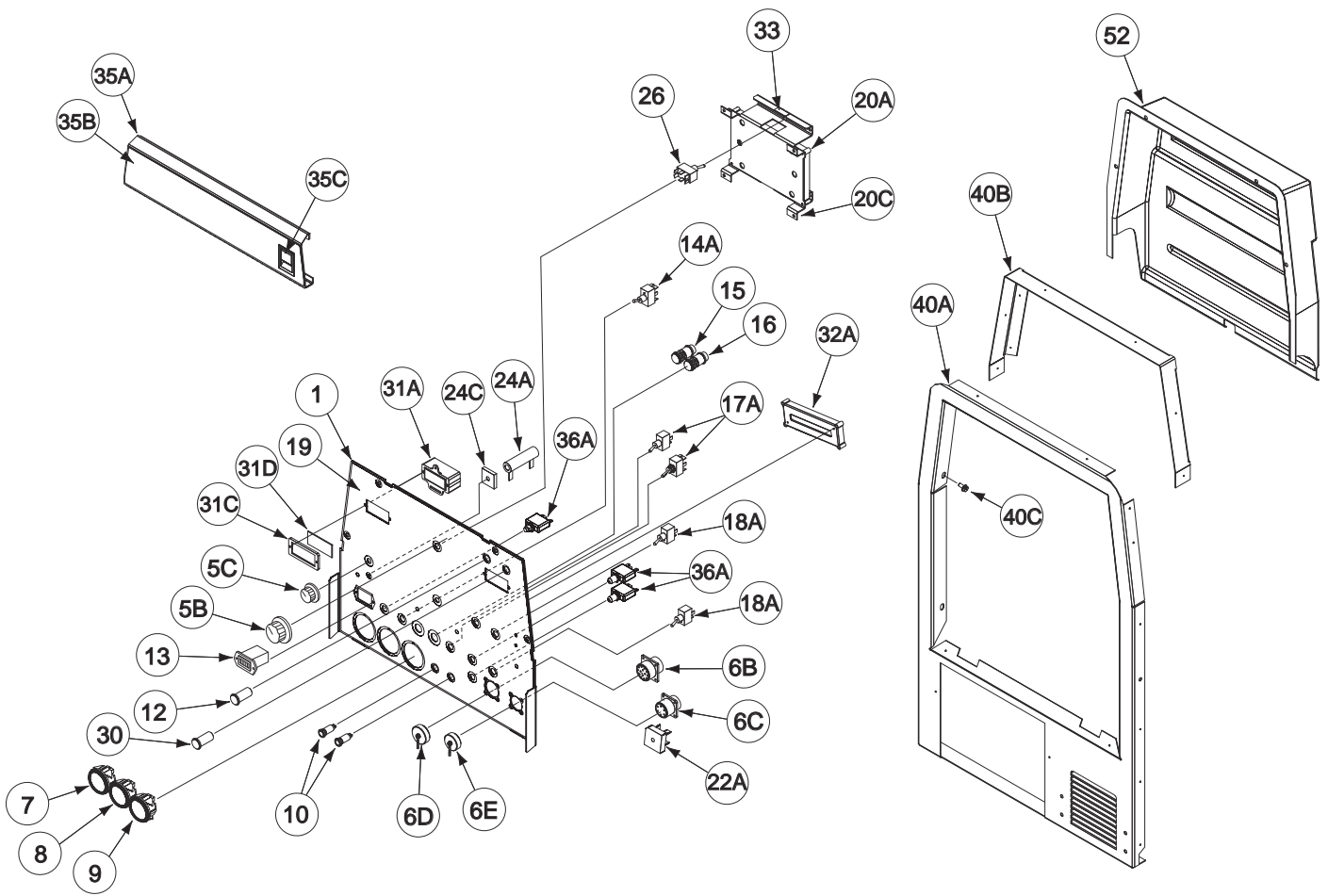
# NOTES

---

VANTAGE® 580 (AU)



# Case Front & Control Panel Assembly



Index of Sub Assemblies  
 Part Numbers  
 Index of Sub Assemblies  
 Part Numbers  
 Index of Sub Assemblies  
 Part Numbers  
 Index of Sub Assemblies  
 Part Numbers

# Indicates a change this printing.

Use only the parts marked "x" in the column under the heading number called for in the model index page.

ITEM	DESCRIPTION	PART NO.	QTY.	1	2	3	4	5	6	7	8	9
1	Control Panel Asbly, Includes: Control Panel	G4982-28 G4867-3	1 1	X X								
2	Plain Washer (Not Shown)	S9262-27	2	X								
3	#10-24 HN (Not Shown)	CF000010	4	X								
4	Lock Washer (Not Shown)	E106A-1	2	X								
5A	Connector & Lead Asbly (Not Shown)	M19685-17	1	X								
5B	Knob	T10491-1	1	X								
5C	Knob	T10491	2	X								
5D	"O" Ring (Not Shown)	T13483-7	3	X								
6A	Connector & Lead Asbly (Not Shown), Includes:	M19685-31	1	X								
6B	Connector Receptacle	S12021-70	1	X								
6C	Connector Receptacle	S12021-68	1	X								
6D	Cap-Cable Connector	S17062-10	1	X								
6E	Cap-Cable Connector	S17062-11	1	X								
6F	Pan Head Screw (Not Shown)	S8025-96	8	X								
7	Fuel Gauge	S17585-1	1	X								
8	Temperature Gauge	S25154-2	1	X								
9	Oil Pressure Gauge	S20206-2	1	X								
10	Pilot Light - (Yellow)	T13534-11	2	X								
11A	Catch Bracket (Not Shown)	S24659	1	X								
11B	Self Tapping Screw (Not Shown)	S8025-98	2	X								
12	Pilot Light - (Green)	S24691	1	X								
13	Hour Meter - Miniature	S17475-3	1	X								
14A	Switch - Toggle, DPDT	T10800-36	1	X								
14B	Sealing Boot (Not Shown)	S22061-4	1	X								
15	Switch, Pushbutton	S13146-4	1	X								
16	Start Button	S13146-1	1	X								
17A	Switch, Toggle, SPST	T10800-38	2	X								
17B	Sealing Boot (Not Shown)	S22061-4	2	X								
18A	Toggle Switch	T10800-39	2	X								
18B	Sealing Boot (Not Shown)	S22061-4	2	X								
19	Upper Nameplate (G6922-1) (Part of G6922)	<b>NSS</b>	1	X								
20A	Weld Control PC Bd Assembly	G5507-[ ]	1	X								#
20B	Self Tapping Screw (Not Shown)	S8025-100	4	X								
20C	P.C. Board Mounting Bracket	L11924-1	1	X								
20D	#10-24 HLN (Not Shown)	T9187-13	4	X								
21	Wiring Harness (Not Shown)	G5676	1	X								
22A	Diode Bridge	T13637-6	1	X								
22B	Insulating Washer (Not Shown)	S10773-7	1	X								
22C	Plain Washer (Not Shown)	S9262-3	1	X								
22D	Lock Washer (Not Shown)	E106A-1	1	X								
22E	#10-24 HN (Not Shown)	CF000010	1	X								
24A	Resistor	S10404-132	1	X								
24B	#10-24 x 3.00 RHS (Not Shown)	CF000009	1	X								
24C	Insulating Washer	T4479-A	2	X								
24D	Plain Washer (Not Shown)	S9262-27	1	X								
24E	Lock Washer (Not Shown)	E106A-1	1	X								
24F	#10-24 HN (Not Shown)	CF000010	1	X								
26	Switch	T10800-39	1	X								
30	Pilot Light (Red)	T13534-3	1	X								

Index of Sub Assemblies  
 Sub Assembly Illustration  
 Index of Sub Assemblies  
 Sub Assembly Illustration  
 Index of Sub Assemblies  
 Sub Assembly Illustration  
 Index of Sub Assemblies  
 Sub Assembly Illustration

# Indicates a change this printing.

Use only the parts marked "x" in the column under the heading number called for in the model index page.

ITEM	DESCRIPTION	PART NO.	QTY.	1	2	3	4	5	6	7	8	9
31	Digital Weld Meter Kit, Includes:	K2467-1	1	X								
31A	Meter Housing Asbly (L11160)	<b>NSS</b>	2	X								
31B	Meter Housing Seal (Not Shown)	S24630	2	X								
31C	Meter Bezel	M19368	2	X								
31D	Lens	T14807-9	2	X								
31E	#4-40 x .375 SS-PPNHS (Not Shown)	CF000389	4	X								
31F	Plain Washer (Not Shown)	S9262-3	4	X								
31G	#6-32 HN (Not Shown)	CF000005	4	X								
32A	OCV Indicator PCB Asbly	G4407-[ ]	1	X								
32B	#10-24 HLN (Not Shown)	T9187-13	4	X								
33	VRD On/Off Decal (G6922-5) (Part of G6922)	<b>NSS</b>	1	X								
34	Connector & Lead Asbly (Not Shown)	M19685-11	1	X								
35	Door, Decal & Latch Assembly, Includes:	M25536	1	X								
35A	Drop Down Door Assembly	L12440	1	X								
35B	Decal (G6922-2) (Part of G6922)	<b>NSS</b>	1	X								
35C	Door Latch	S25569	1	X								
35D	Thread Forming Screw (Not Shown)	S9225-68	4	X								
36A	Circuit Breaker	T12287-20	1	X								
36B	Sealing Boot (Not Shown)	S22061-3	1	X								
39	Thread Forming Screw (Not Shown)	S9225-68	4	X								
40A	Case Front	G4865	1	X								
40B	Case Front Insert	G4870	1	X								
40C	Thread Forming Screw	S9225-68	6	X								
45	Instruction Tag (Not Shown)	M17238	1	X								
52	Shield	G6048	1	X								

Note: When ordering new printed circuit boards indicate the dash number [ ] of the "Old" board that is to be replaced. This will aid Lincoln in supplying the correct and latest board along with any necessary jumpers or adapters. The dash number brackets [ ] have purposely been left blank so as to eliminate errors, confusion and updates.

Index of Sub Assemblies  
 Sub Assembly Illustration  
 Index of Sub Assemblies  
 Sub Assembly Illustration  
 Index of Sub Assemblies  
 Sub Assembly Illustration  
 Index of Sub Assemblies  
 Sub Assembly Illustration



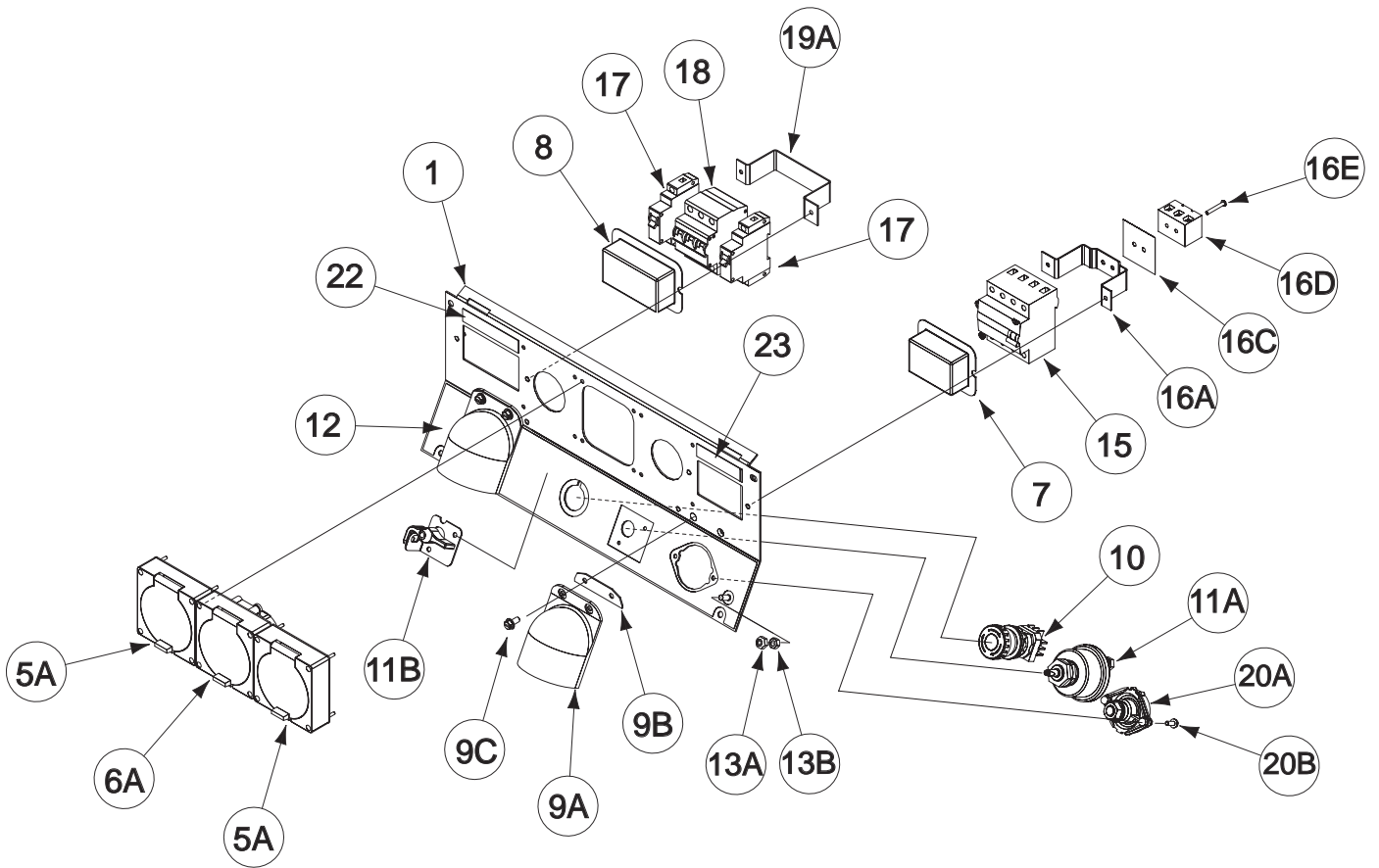
# NOTES

---

VANTAGE® 580 (AU)



# Output Panel Assembly



Index of Sub Assemblies  
 Part Numbers  
 Index of Sub Assemblies  
 Part Numbers  
 Index of Sub Assemblies  
 Part Numbers

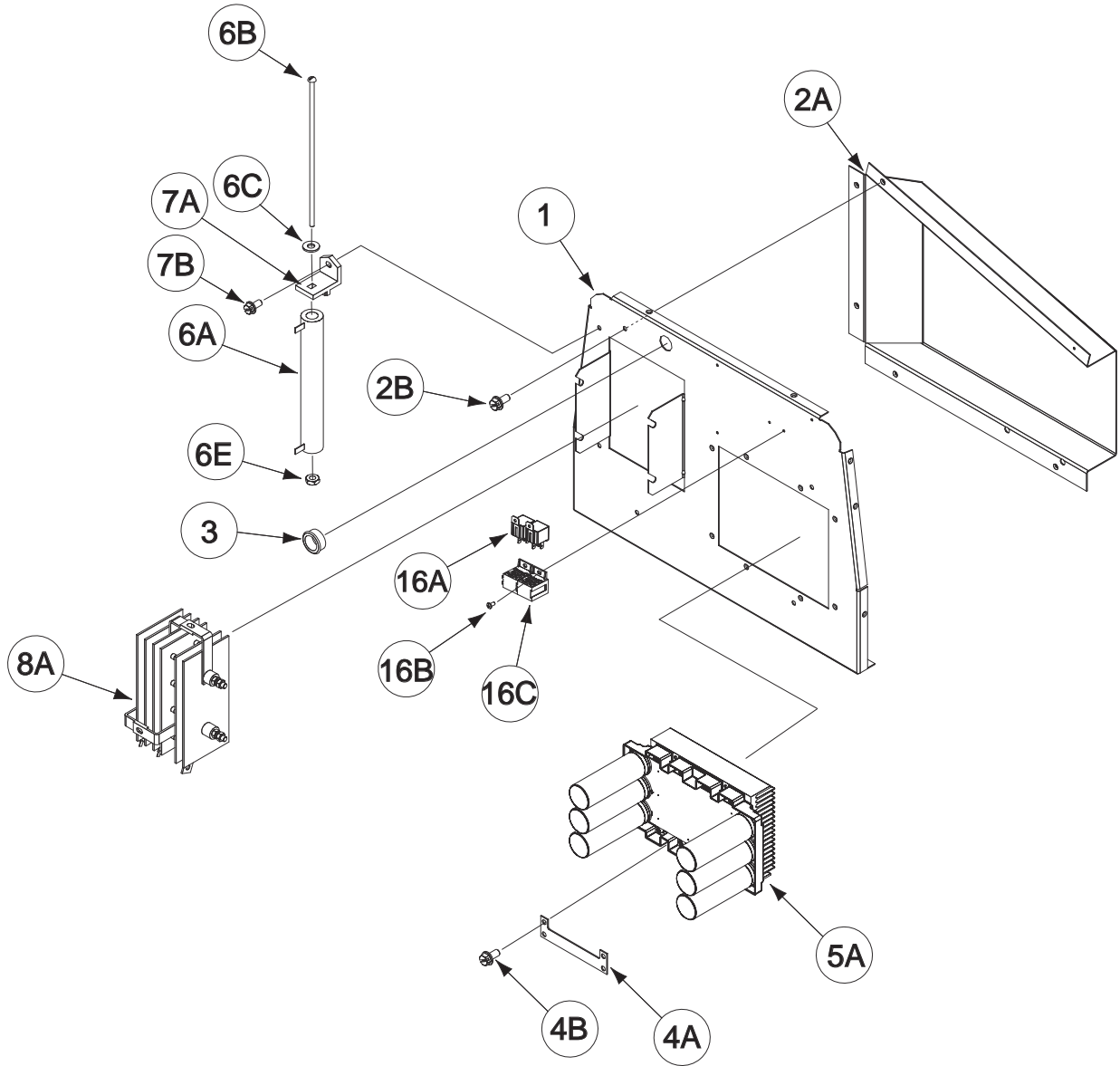
# Indicates a change this printing.

Use only the parts marked "x" in the column under the heading number called for in the model index page.

ITEM	DESCRIPTION	PART NO.	QTY.	1	2	3	4	5	6	7	8	9
1	Output Panel Assembly, Includes: Output Panel	G4983-23 G4866-10	1 1	X X								
2	Plain Washer (Not Shown)	S9262-27	2	X								
3	#10-24 HN (Not Shown)	CF000010	4	X								
4	Lock Washer (Not Shown)	E106A-1	2	X								
5A	Receptacle (15 Amp)	M22425	2	X								
5B	#6-32 x 1.25 RHS (Not Shown)	CF000050	8	X								
5C	Lock Washer (Not Shown)	E106A-13	8	X								
5D	#6-32 HN (Not Shown)	CF000005	8	X								
6A	Receptacle (32 Amp)	M22456-2	1	X								
6B	#6-32 x 1.25 RHS (Not Shown)	CF000050	4	X								
6C	Lock Washer (Not Shown)	E106A-13	4	X								
6D	#6-32 HN (Not Shown)	CF000005	4	X								
7	Clear Boot	S28344-2	1	X								
8	Clear Boot	S28344-3	1	X								
9A	Output Stud Cover	M20007	2	X								
9B	Output Stud Cover Plate	S25669	2	X								
9C	Thread Forming Screw	S9225-68	4	X								
10	E-Stop Switch	S21130-50	1	X								
11A	Switch, Master Disconnect	S25750	1	X								
11B	Locking Lever Kit	S25749	1	X								
11C	Thread Forming Screw (Not Shown)	S9225-94	2	X								
12	Rating Decal (G6922-3) (Part of G6922)	<b>NSS</b>	1	X								
13A	1/4-20 HLN	T9187-1	1	X								
13B	1/4-20 HN	CF000017	1	X								
15	RCD	S28343	1	X								
16A	Mounting Strap	S28387-3	1	X								
16B	#10-24 HLN (Not Shown)	T9187-13	2	X								
16C	Mylar Insulation	S28105	1	X								
16D	Terminal Strip	S20763-3	1	X								
16E	#8-32 x 1.125 RHS	CF000007	2	X								
17	Circuit Breaker	S28342-2	2	X								
18	Circuit Breaker	S28342	1	X								
19A	Mounting Strap	S28387-2	1	X								
19B	#10-24 HLN (Not Shown)	T9187-13	2	X								
20A	Output Stud	M13900	2	X								
20B	Self Tapping Screw	S8025-91	4	X								
22	Decal (G6922-6) (Part of G6922)	<b>NSS</b>	1	X								
23	Decal (G6922-7) (Part of G6922)	<b>NSS</b>	1	X								
30	Thread Forming Screw (Not Shown)	S9225-68	4	X								
35A	Suppressor Assembly (Not Shown)	S28840	2	X								#
35B	#10-24 HN (Not Shown)	CF000010	4	X								
35C	Lock Washer (Not Shown)	E106A-1	4	X								
35D	Plain Washer (Not Shown)	S9262-27	2	X								

Index of Sub Assemblies  
 Sub Assembly Illustration  
 Index of Sub Assemblies  
 Sub Assembly Illustration  
 Index of Sub Assemblies  
 Sub Assembly Illustration  
 Index of Sub Assemblies  
 Sub Assembly Illustration

# Power Module Panel Assembly



Index of Sub Assemblies  
 Part Numbers  
 Index of Sub Assemblies  
 Part Numbers  
 Index of Sub Assemblies  
 Part Numbers  
 Index of Sub Assemblies  
 Part Numbers

# Indicates a change this printing.

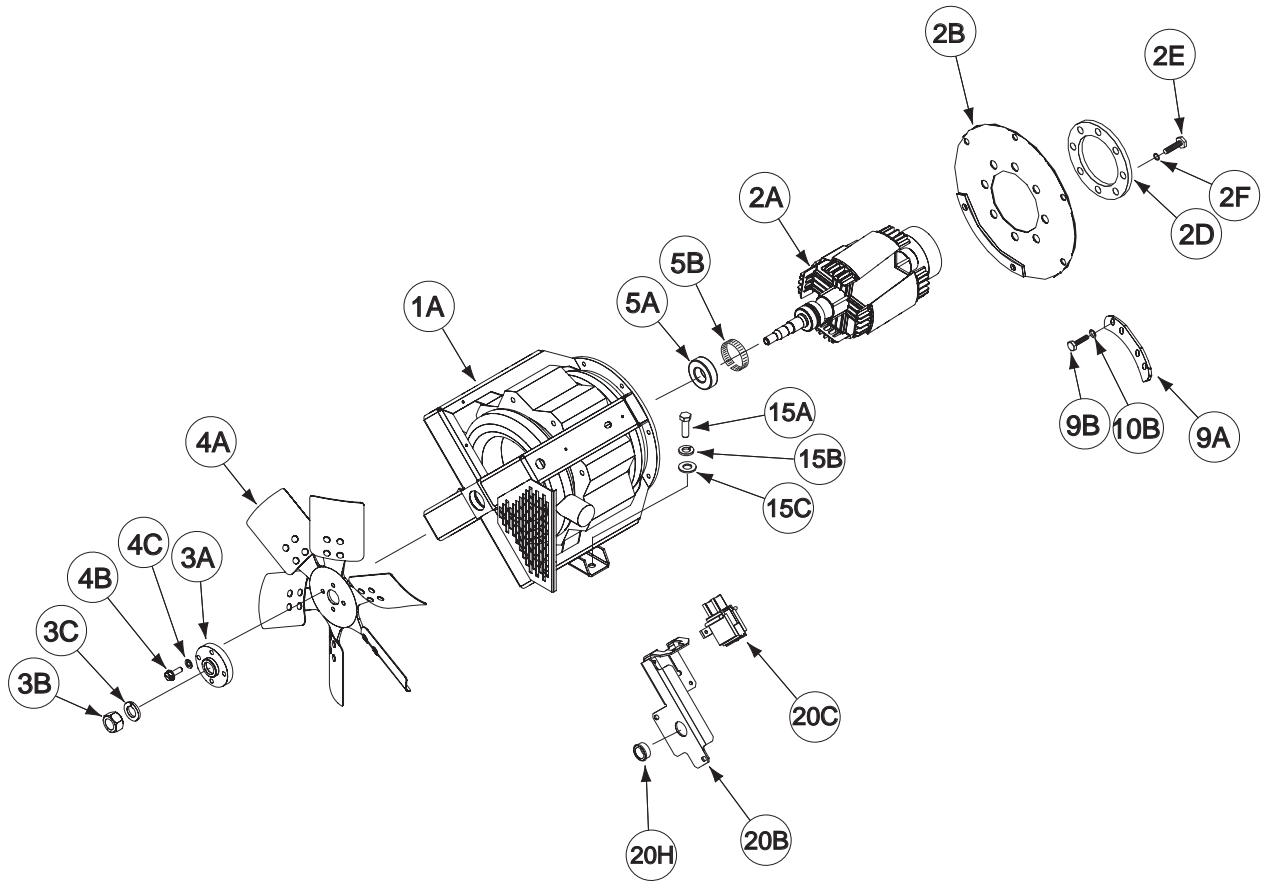
Use only the parts marked "x" in the column under the heading number called for in the model index page.

ITEM	DESCRIPTION	PART NO.	QTY.	1	2	3	4	5	6	7	8	9
1	Power Module Panel Assembly, Includes: Power Module Panel	G5011-4 G4930-1	1 1	X X								
2A	Fuel Tank Front Panel	G4932-1	1	X								
2B	Thread Forming Screw	S9225-68	1	X								
3	Bushing	T12380-4	1	X								
4A	Chopper Bracket	S26006-1	2	X								
4B	Thread Forming Screw	S9225-68	4	X								
5A	Chopper Assembly	L12683-[ ]	1	X								
5B	Torx Button Head Screw (Not Shown)	S25930-6	4	X								
5C	Lock Washer (Not Shown)	E106A-2	4	X								
6A	Resistor	S10404-138	1	X								
6B	#10-24 x 7.50 RHS	CF000191	1	X								
6C	Plain Washer	S9262-27	2	X								
6D	Lock Washer (Not Shown)	E106A-1	1	X								
6E	#10-24 HN	CF000010	1	X								
7A	Heat Sink Holder	S22168	2	X								
7B	Thread Forming Screw	S9225-45	2	X								
8A	Rectifier	L11132-2	1	X								
8B	Plain Washer (Not Shown)	S9262-121	2	X								
8C	Lock Washer (Not Shown)	E106A-14	2	X								
10	Thread Forming Screw (Not Shown)	S9225-68	4	X								
16A	Relay	S14293-20	2	X								
16B	Thread Forming Screw	S9225-61	4	X								
16C	Relay Socket (Part of G5676 Wiring Harness)	S14351-5	2	X								

Note: When ordering new printed circuit boards indicate the dash number [ ] of the "Old" board that is to be replaced. This will aid Lincoln in supplying the correct and latest board along with any necessary jumpers or adapters. The dash number brackets [ ] have purposely been left blank so as to eliminate errors, confusion and updates.

Index of Sub Assemblies  
 Sub Assembly Illustration  
 Index of Sub Assemblies  
 Sub Assembly Illustration  
 Index of Sub Assemblies  
 Sub Assembly Illustration  
 Index of Sub Assemblies  
 Sub Assembly Illustration

# Generator & Rotor Assembly



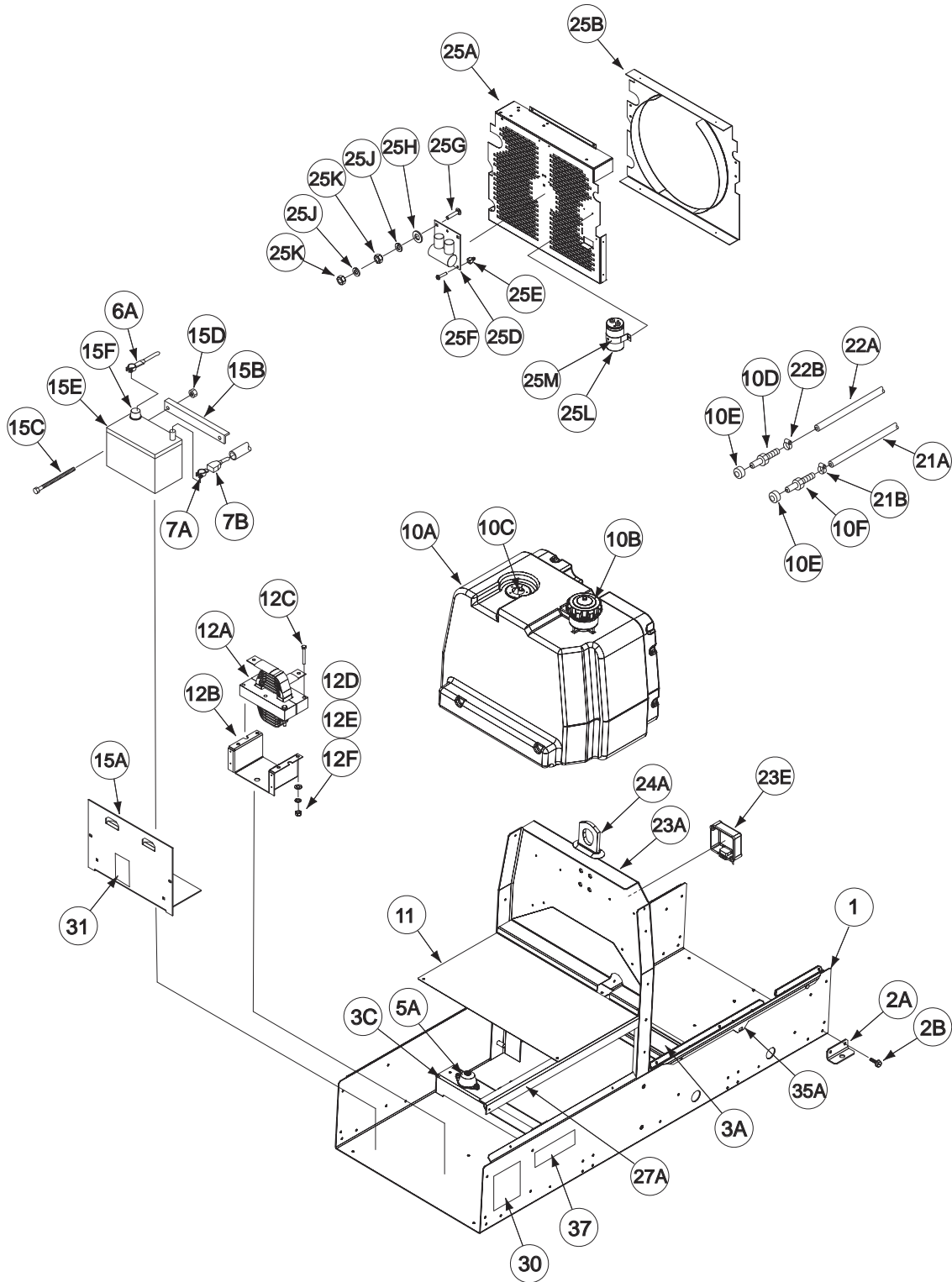
# Indicates a change this printing.

Use only the parts marked "x" in the column under the heading number called for in the model index page.

ITEM	DESCRIPTION	PART NO.	QTY.	1	2	3	4	5	6	7	8	9
1A	Generator Assembly (L10742-23), Includes: Stator Tie Bar Welded Assembly	<b>NSS</b> G3088-22	1 1	X X								
2	Rotor & Coupling Disc Asbly (L13110-6), Includes:	<b>NSS</b>	1	X								
2A	Rotor & Shaft Assembly	L10501-7	1	X								
2B	Coupling Disc	M19796	1	X								
2C	Coupling Disc Backing Plate (Not Shown)	S8042	2	X								
2D	Coupling Clamp Ring	S14233	1	X								
2E	7/16-14 x 1.50 HHCS	T8833-2	8	X								
2F	Lock Washer	E106A-8	8	X								
3A	Fan Couple	S22657	1	X								
3B	3/4-10 HN	CF000025	1	X								
3C	Lock Washer	E106A-7	1	X								
4A	Fan Blade	L9551	1	X								
4B	Thread Forming Screw	S9225-22	4	X								
4C	Lock Washer	E106A-14	4	X								
5A	Bearing	M9300-85	1	X								
5B	Tolerance Ring	S18044-5	1	X								
9A	Blower Segment	S11868-1	4	X								
9B	M10 x 1.5 x 25 SHCS	T14731-61	8	X								
9C	Lock Washer (Not Shown)	S17400-1	8	X								
10A	3/8-16 x 1.25 HHCS (Not Shown)	T8833-10	8	X								
10B	Lock Washer	E106A-16	8	X								
15A	3/8-16 x 1.25 HHCS	T8833-62	2	X								
15B	Lock Washer	E106A-16	2	X								
15C	Plain Washer	S9262-120	2	X								
20A	Brush Holder & Bracket Asbly, Includes:	M21315-5	1	X								#
20B	Brush Holder Bracket	M18323-1	1	X								
20C	Brush Holder & Brush Holder Asbly, Includes:	M16158	1	X								
	Brush Holder Cartridge	G2114	1	X								
	Brush Assembly	S19480	2	X								
	Brush Assembly Retainer	M16157	1	X								
20G	Self Tapping Screw (Not Shown)	S8025-91	2	X								
20H	Bushing	T12380-4	1	X								
20J	Exciter Harness (Not Shown)	G4322	1	X								
20K	Thread Forming Screw (Not Shown)	S9225-8	2	X								

Index of Sub Assemblies  
 Sub Assembly Illustration  
 Index of Sub Assemblies  
 Sub Assembly Illustration  
 Index of Sub Assemblies  
 Sub Assembly Illustration  
 Index of Sub Assemblies  
 Sub Assembly Illustration

# Base, Fuel Tank, Battery Assembly



Index of Sub Assemblies  
 Part Numbers  
 Index of Sub Assemblies  
 Part Numbers  
 Index of Sub Assemblies  
 Part Numbers  
 Index of Sub Assemblies  
 Part Numbers



# Indicates a change this printing.

Use only the parts marked "x" in the column under the heading number called for in the model index page.

ITEM	DESCRIPTION	PART NO.	QTY.	1	2	3	4	5	6	7	8	9
1	Base	G4900-1	1	X								
2A	Mounting Bracket	M20610	4	X								
2B	Thread Forming Screw	S9225-64	8	X								
3A	Support (Engine)	L12454-2	1	X								
3B	Thread Forming Screw (8 per Support) (Not Shown)	S9225-68	16	X								
3C	Support (Stator)	L12454	1	X								
5A	Rubber Mount	T11991-3	4	X								
5B	Thread Forming Screw (Not Shown)	S9225-64	8	X								
6A	Battery Cable (Negative)	S8070-51	1	X								
7A	Battery Cable (Positive)	S8070-52	1	X								#
7B	Battery Terminal Cover	S20191-1	1	X								#
7C	Lock Washer (Not Shown)	E106A-14	1	X								#
7D	Plain Washer (Not Shown)	S9262-121	1	X								
9	Thread Forming Screw (Not Shown)	S9225-64	1	X								
	Fuel Tank Assembly, Includes:	G6071	1	X								
10A	Fuel Tank	<b>NSS</b>	1	X								
10B	Fuel Cap	S20541	1	X								
10C	Fuel Sender	L12505	1	X								
10D	Fuel Fitting	S19564-1	1	X								
10E	Rubber Plug	S19563	2	X								
10F	Fuel Fitting, (Return)	S19564-5	1	X								
11	Fuel Tank Tray	L13304	1	X								
12	Choke & Bracket Asbly, Includes:	M21519	1	X								
12A	Choke	M21518	1	X								
12B	Choke Bracket	M20547	1	X								
12C	5/16-18 x 2.75 HHCS	CF000187	2	X								
12D	Plain Washer	S9262-121	2	X								
12E	Lock Washer	E106A-14	2	X								
12F	5/16-18 HN	CF000029	2	X								
12G	Thread Forming Screw (Not Shown)	S9225-68	4	X								
15	Battery & Hold Down Asbly, Includes:	L8904-5	1	X								
15A	Battery Tray	M20535	1	X								
15B	Battery Bracket	S22018	1	X								
15C	Carriage Bolt	T11827-31	2	X								
15D	1/4-20 HLN	T9187-6	2	X								
15E	Battery (12V) (M9399-11)	<b>NSS</b>	1	X								
15F	Cap	T14654	1	X								
15G	Thread Forming Screw (Not Shown)	S9225-68	4	X								
21A	Fuel Line (Return)	T10642-276	1	X								
21B	Hose Clamp	S10888-35	2	X								
22A	Fuel Hose (Supply Tank to Water Separator)	T10642-133	1	X								
22B	Hose Clamp	T13777-5	2	X								
23A	Lift Bale Frame	G6084	1	X								
23B	1/2-13 x 1.25 HHCS (Not Shown)	T8833-24	4	X								
23C	Lock Washer (Not Shown)	E106A-15	4	X								
23D	1/2-13 HN (Not Shown)	CF000027	4	X								
23E	Engine Control Unit (Supplied w/Engine)	<b>NSS</b>	1	X								
23F	Thread Forming Screw (Not Shown)	S9225-17	2	X								
24A	Lift Bale	S10227-61	1	X								
24B	1/2-13 x 1.25 HHCS (Not Shown)	T8833-24	4	X								
24C	Lock Washer (Not Shown)	E106A-15	4	X								

Index of Sub Assemblies  
 Sub Assembly Illustration  
 Index of Sub Assemblies  
 Sub Assembly Illustration  
 Index of Sub Assemblies  
 Sub Assembly Illustration  
 Index of Sub Assemblies  
 Sub Assembly Illustration

# Indicates a change this printing.

Use only the parts marked "x" in the column under the heading number called for in the model index page.

ITEM	DESCRIPTION	PART NO.	QTY.	1	2	3	4	5	6	7	8	9
25	Stator Fan Guard & Shroud Assembly, Includes:	L13119	1	X								
25A	Stator Fan Guard	L12458-1	1	X								
25B	Stator Fan Shroud	L12485	1	X								
25C	Thread Forming Screw (Not Shown)	S9225-68	8	X								
25D	Bypass/Stabilizer P.C. Board Assembly	L10121-[ ]	1	X								
25E	Expansion Nut	S14020-3	3	X								
25F	Self Tapping Screw	S8025-97	3	X								
25G	1/4-20 x .75 HHCS	CF000014	2	X								
25H	Plain Washer	S9262-98	2	X								
25J	Lock Washer	E106A-2	2	X								
25K	1/4-20 HN	CF000017	2	X								
25L	Filter Capacitor	S13490-171A	1	X								
25M	Capacitor Bracket Assembly	S22747	1	X								
25N	Thread Forming Screw (Not Shown)	S9225-68	1	X								
25P	Set Screw (Not Shown)	S11604-65	2	X								
25Q	Output Stud Cover (Not Shown)	M20007	1	X								
25R	Output Stud Cover Plate (Not Shown)	S25669	1	X								
25S	Thread Forming Screw (Not Shown)	S9225-68	2	X								
25T	Thread Forming Screw (Not Shown)	S9225-68	4	X								
27A	Support Rail	L12457	2	X								
27B	Thread Forming Screw (Not Shown)	S9225-68	4	X								
30	Warning Decal	M16197	1	X								
31	Battery Warning Decal	S17851	1	X								
35A	Side Panel	L12515-1	1	X								
35B	Thread Forming Screw (SS) (Not Shown)	S24739-27	3	X								
36	Door Bumper (Not Shown)	T14882-1	2	X								
37	Rating Plate	M22537	1	X								

**Note:** When ordering new printed circuit boards indicate the dash number [ ] of the "Old" board that is to be replaced. This will aid Lincoln in supplying the correct and latest board along with any necessary jumpers or adapters. The dash number brackets [ ] have purposely been left blank so as to eliminate errors, confusion and updates.

Index of Sub Assemblies  
 Sub Assembly Illustration  
 Index of Sub Assemblies  
 Sub Assembly Illustration  
 Index of Sub Assemblies  
 Sub Assembly Illustration  
 Index of Sub Assemblies  
 Sub Assembly Illustration

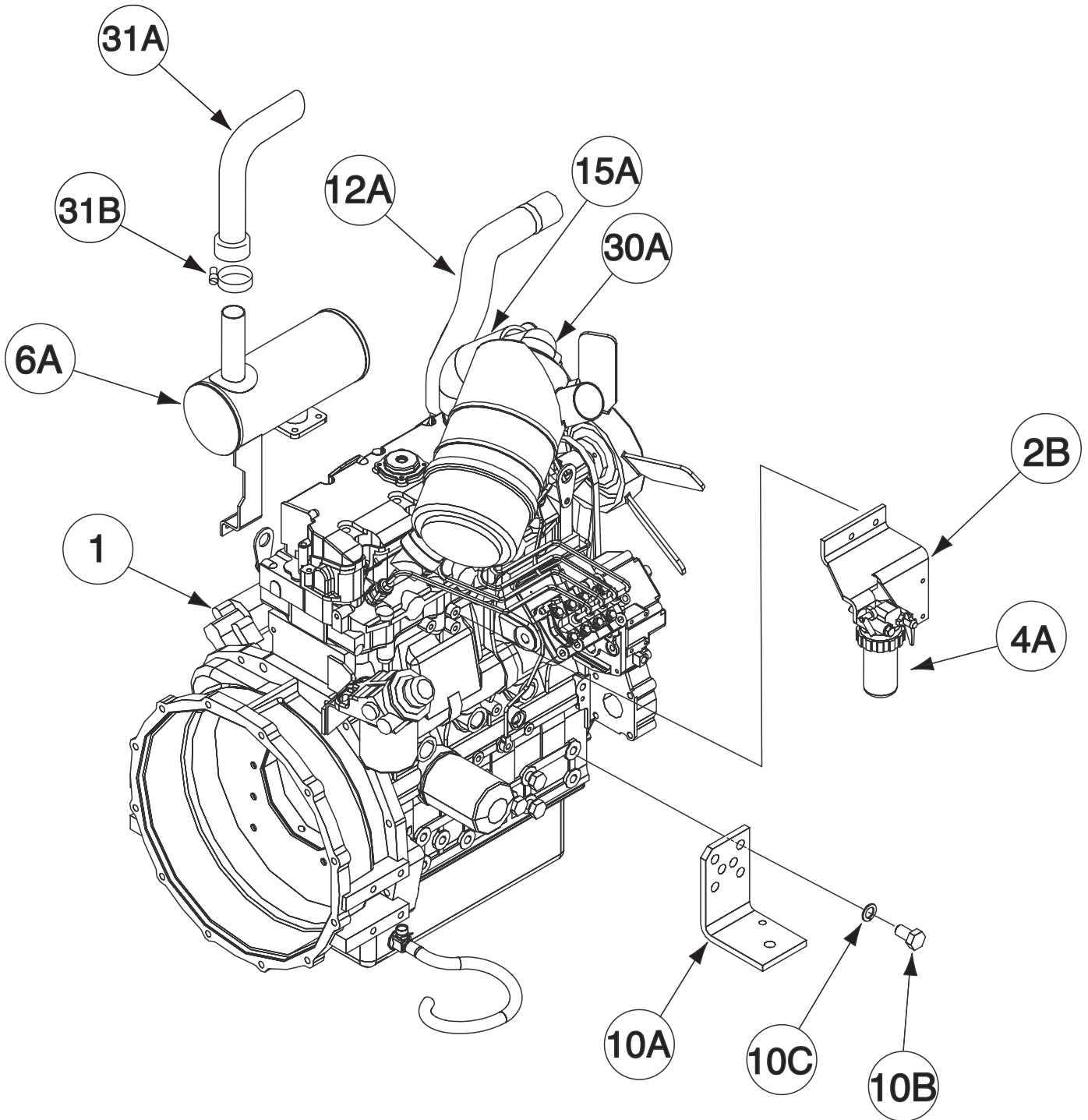
# NOTES

---

VANTAGE® 580 (AU)



# Engine Assembly



Index of Sub Assemblies  
Part Numbers  
Index of Sub Assemblies  
Part Numbers  
Index of Sub Assemblies  
Part Numbers  
Index of Sub Assemblies  
Part Numbers

# Indicates a change this printing.

Use only the parts marked "x" in the column under the heading number called for in the model index page.

ITEM	DESCRIPTION	PART NO.	QTY.	1	2	3	4	5	6	7	8	9
1	Engine Assembly (G6275), Includes: Engine (M21511) (Perkins 404D-22T)	<b>NSS</b> <b>NSS</b>	1 1	X X								
2B	Water Separator Bracket	M20808-1	1	X								
2C	M8 x 1.25 x 16 HHCS (Not Shown)	T14731-31	2	X								
2D	Lock Washer (Not Shown)	E106A-3	2	X								
3A	Flex Tube (Sep. to Lift Pump) (Not Shown)	T10642-86	1	X								
3B	Hose Clamp (Not Shown)	T13777-5	2	X								
4A	Water Separator, Includes: Water Separator Element Set	M20840 M20840-A	1 1	X X								
4B	5/16-18 x 2.75 HHCS (Not Shown)	CF000073	1	X								
4C	Lock Washer (Not Shown)	E106A-14	1	X								
4D	5/16-18 HN (Not Shown)	CF000029	1	X								
6A	Muffler	G5545	1	X								
6B	Exhaust Gasket (Not Shown) (Supplied w/Engine)	<b>NSS</b>	1	X								
6C	M8 - 1.25 x 25 HHCS (Not Shown)	T14731-11	4	X								
6D	Lock Washer (Not Shown)	E106A-3	4	X								
9A	Flex Hose (Not Shown)	T10642-278	1	X								
9B	Clamp (Not Shown)	S10888-27	1	X								
10A	Engine Mounting Foot	S24167-2	2	X								
10B	M14-1.5 x 25 HHCS (Supplied w/Engine)	<b>NSS</b>	6	X								
10C	Lock Washer (Supplied w/Engine)	<b>NSS</b>	6	X								
	(11A thru 11D Used to Fasten Harness to Alternator Studs)											
11A	M6 x 1.0 HLN (Not Shown)	S19959-1	1	X								
11B	M5 x 0.8 HN (Not Shown)	T14815-4	1	X								
11D	Lock Washer (Not Shown)	E106A-1	1	X								
12A	Upper Radiator Hose	M20827	1	X								
12B	Lower Radiator Hose (Not Shown)	L12942	1	X								
12C	Hose Clamp (Not Shown)	S10888-44	2	X								
15A	Air Intake Hose	M21129	1	X								
15B	Hose Clamp (Not Shown)	S10888-29	2	X								
16A	Rubber Hose (Not Shown)	S26625	1	X								
16B	Hose Clamp (Not Shown)	S10888-27	2	X								
17	Intake Breather Fitting (Not Shown)	S26600	1	X								
18	Speed Sensor (Not Shown)	S26658	1	X								
19A	Lift Eye (Not Shown)	S26772	1	X								
19B	Lock Washer (Not Shown)	E106A-3	1	X								
19C	M8 x 1.25 x 16 HHCS (Not Shown)	T14731-31	1	X								
21	M8 x 1.25 HN (Not Shown)	T14815-2	1	X								
25A	3/8-16 x 1.25 HHCS (Not Shown)	T8833-62	2	X								
25B	Lock Washer (Not Shown)	E106A-16	2	X								
25C	Plain Washer (Not Shown)	S9262-120	2	X								
25D	M4 - 0.7 HN (Not Shown)	T14815-6	2	X								
30	Air Cleaner & Bracket Assembly, Includes:	M21321	1	X								
30A	Air Cleaner	M20358	1	X								
30B	Mounting Band (Not Shown)	M20359	1	X								
30C	Air Cleaner Bracket (Not Shown)	M20807	1	X								
30D	5/16-18 x 1.25 HHCS (Not Shown)	CF000028	2	X								
30E	Plain Washer (Not Shown)	S9262-121	4	X								
30F	Lock Washer (Not Shown)	E106A-14	2	X								
30G	5/16-18 HN (Not Shown)	CF000029	2	X								
30H	Thread Forming Screw (SS) (Not Shown)	S24739-31	3	X								

Index of Sub Assemblies  
Sub Assembly Illustration  
Index of Sub Assemblies  
Sub Assembly Illustration  
Index of Sub Assemblies  
Sub Assembly Illustration  
Index of Sub Assemblies  
Sub Assembly Illustration

# Indicates a change this printing.

Use only the parts marked "x" in the column under the heading number called for in the model index page.

ITEM	DESCRIPTION	PART NO.	QTY.	1	2	3	4	5	6	7	8	9
31A	Outlet Pipe Elbow	S24165	1	X								
31B	Clamp	S24252	1	X								

#  
#



Index of Sub Assemblies  
 Sub Assembly Illustration  
 Index of Sub Assemblies  
 Sub Assembly Illustration  
 Index of Sub Assemblies  
 Sub Assembly Illustration  
 Index of Sub Assemblies  
 Sub Assembly Illustration

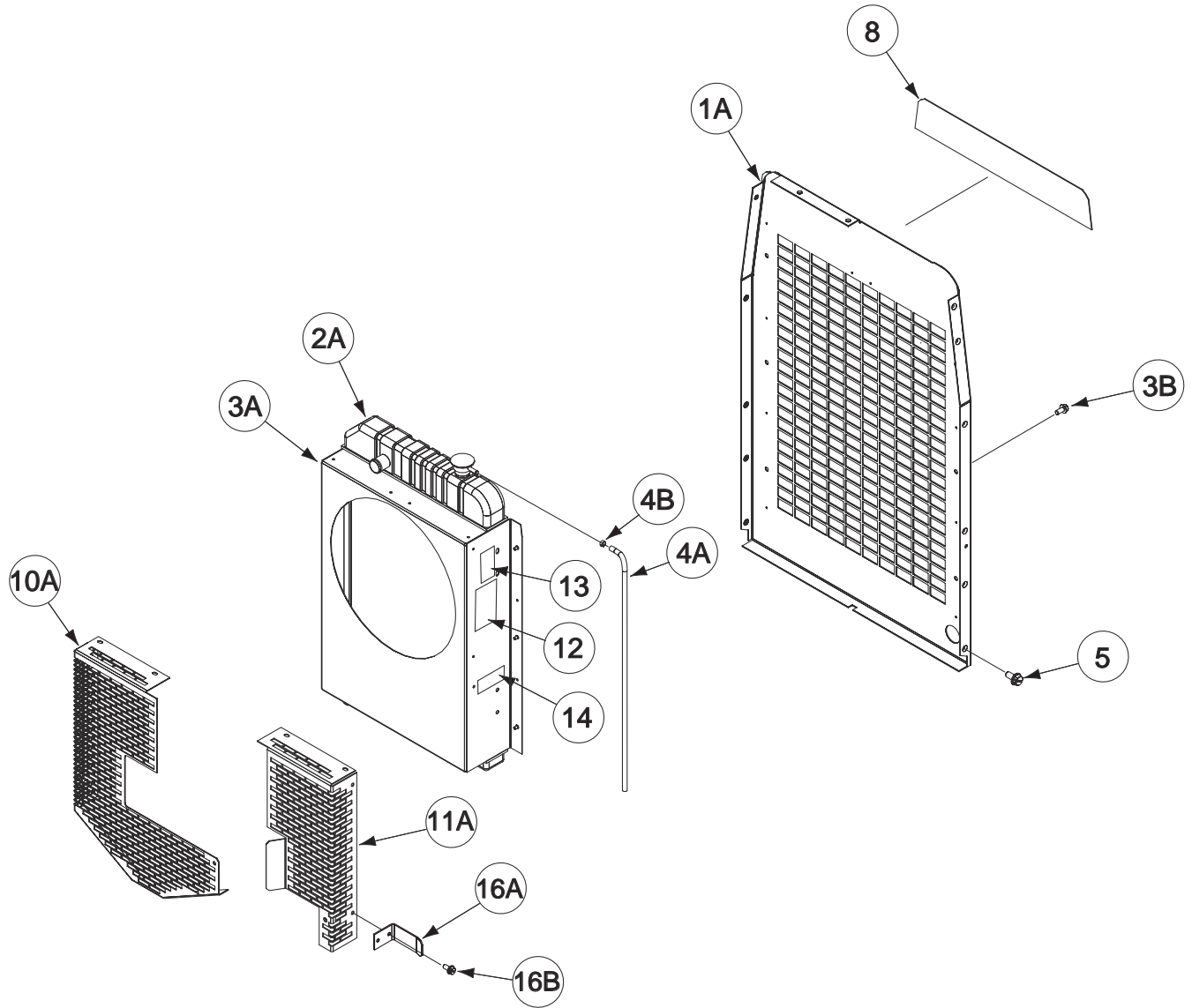
# NOTES

---

VANTAGE® 580 (AU)



# Case Back & Radiator Assembly



Index of Sub Assemblies  
Part Numbers  
Index of Sub Assemblies  
Part Numbers  
Index of Sub Assemblies  
Part Numbers  
Index of Sub Assemblies  
Part Numbers



# Indicates a change this printing.

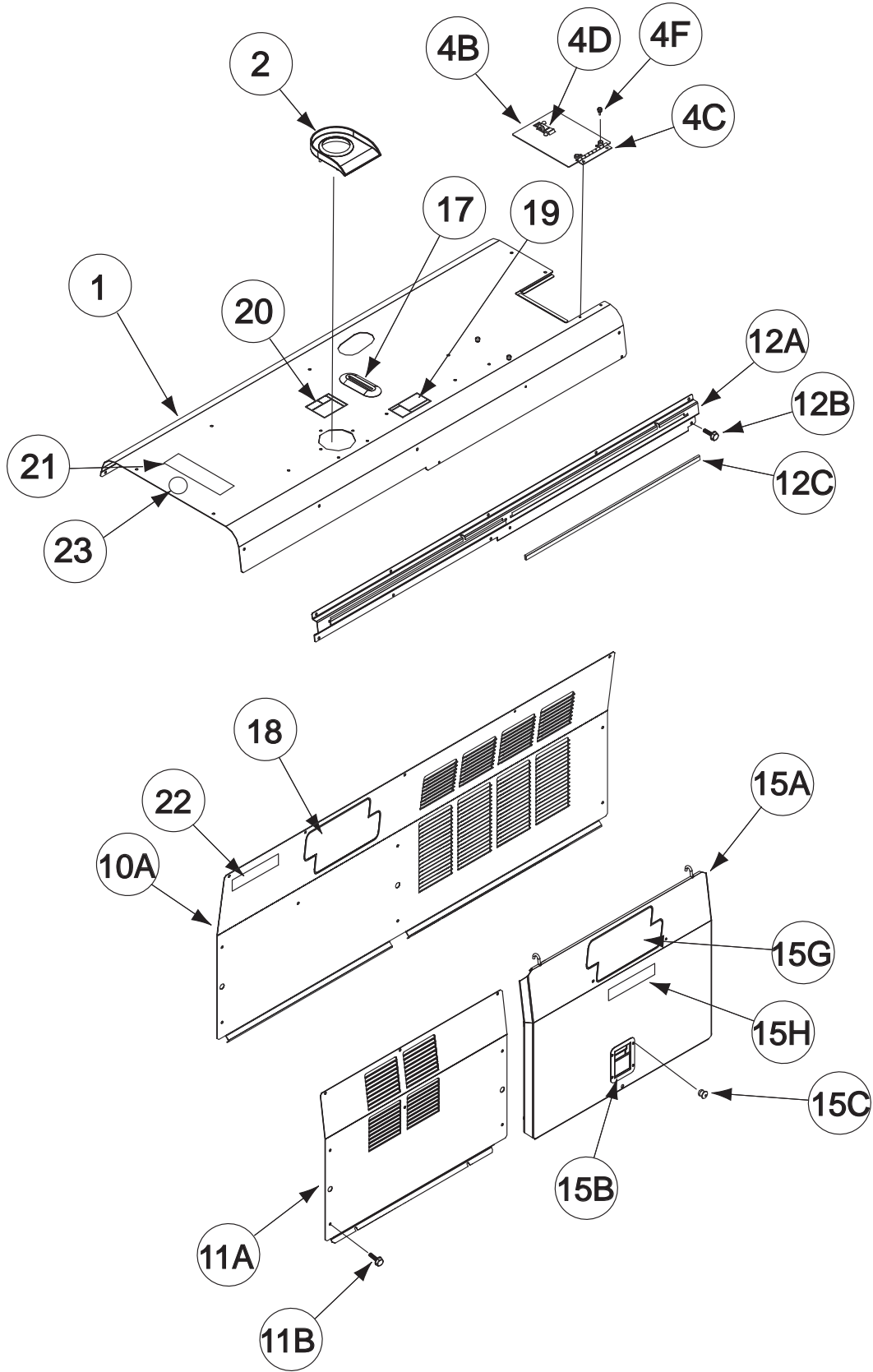
Use only the parts marked "x" in the column under the heading number called for in the model index page.

ITEM	DESCRIPTION	PART NO.	QTY.	1	2	3	4	5	6	7	8	9
1	Case Back & Radiator Asbly, Includes:	L13294	1	X								
1A	Case Back	G4901-5	1	X								
2A	Radiator	G3115-5	1	X								
2B	Lock Washer (Not Shown)	E106A-14	4	X								
2C	Thread Forming Screw (Not Shown)	S9225-64	4	X								
3A	Fan Shroud	G4996-4	1	X								
3B	Thread Forming Screw	S9225-68	6	X								
4A	Flex Tube	T10642-236	1	X								
4B	Hose Clamp	T13777-1	1	X								
5	Thread Forming Screw	S9225-68	4	X								
8	Rear Nameplate (G6922-4) (Part of G6922)	<b>NSS</b>	1	X								
9	Hose Clamp (Not Shown)	S10888-44	2	X								
10A	Fan Guard	G4058-5	1	X								
10B	Thread Forming Screw (Not Shown)	S9225-68	5	X								
11A	Fan Guard	G4060-5	1	X								
11B	Thread Forming Screw (Not Shown)	S9225-68	6	X								
12	Engine Service Decal	S26354	1	X								
13	Warning Decal	T13086-62	1	X								
14	Air Cleaner Service Decal (Supplied w/Air Cleaner)	<b>NSS</b>	1	X								
15	Door Bumper (Not Shown)	T14882	1	X								
16A	Retaining Strap	S27491	1	X								
16B	Thread Forming Screw	S9225-68	2	X								



Index of Sub Assemblies  
 Sub Assembly Illustration  
 Index of Sub Assemblies  
 Sub Assembly Illustration  
 Index of Sub Assemblies  
 Sub Assembly Illustration  
 Index of Sub Assemblies  
 Sub Assembly Illustration

# Enclosure Components



Index of Sub Assemblies  
 Index of Sub Assemblies  
 Index of Sub Assemblies  
 Index of Sub Assemblies

Part Numbers  
 Part Numbers  
 Part Numbers  
 Part Numbers

# Indicates a change this printing.

Use only the parts marked "x" in the column under the heading number called for in the model index page.

ITEM	DESCRIPTION	PART NO.	QTY.	1	2	3	4	5	6	7	8	9
1	Roof Assembly, Includes: Roof	L13116 G4902-1	1 1	X X								
2	Fuel Trough	L12084	1	X								
4A	Radiator Cap Cover Assembly, Includes:	M20278	1	X								
4B	Radiator Cap Cover	S25717	1	X								
4C	Hinge	S21250-19	1	X								
4D	Latch	S24694	1	X								
4E	Rivet (Not Shown)	T12584-9	2	X								
4F	Door Bumper	T14882-1	2	X								
4G	Rivet (Not Shown)	T12584-6	2	X								
5	Door Bumper (Not Shown)	T14882-1	2	X								
8	Thread Forming Screw (SS) (Not Shown)	S24739-27	13	X								
10A	Left Case Side	G4903-2	1	X								
10B	Thread Forming Screw (SS) (Not Shown)	S24739-27	11	X								
11A	Right Case Side	G4904	1	X								
11B	Thread Forming Screw (SS)	S24739-27	7	X								
12A	Door Slide	L12516-1	1	X								
12B	Thread Forming Screw (SS)	S24739-27	12	X								
12C	Edge Guard	S25719-2	2	X								
	Door Assembly, Includes	L13813	1	X								
15A	Door	L12513-1	1	X								
15B	Door Latch	M20241	1	X								
15C	Rivet	T12584-6	4	X								
15D	Bumper (Not Shown)	T14882-2	2	X								
15E	Rivet (Not Shown)	T12584-6	2	X								
15F	Bumper (Not Shown)	T14882	2	X								
15G	Logo Decal	S27368-6	1	X								
15H	Family Name Decal	M21801	1	X								
17	Cover Seal	S12934-1	1	X								
18	Logo Decal	S27368-6	1	X								
19	Fuel Warning Decal	T13086-205	1	X								
20	Warning Decal	S25896	1	X								
21	CO Warning Decal	M21436	1	X								
22	Family Name Decal	M21801	1	X								
23	3 Year Warranty Decal (Part of G6922-3) (Part of G6922)	<b>NSS</b>	1	X								
24	Green Initiative Decal (Not Shown)	S28039-1	1	X								



Index of Sub Assemblies  
 Sub Assembly Illustration  
 Index of Sub Assemblies  
 Sub Assembly Illustration  
 Index of Sub Assemblies  
 Sub Assembly Illustration  
 Index of Sub Assemblies  
 Sub Assembly Illustration

# NOTES

---

VANTAGE® 580 (AU)

