






PM-282374B

2022-05

Processes

 MIG (GMAW) Welding
Flux Cored (FCAW) Welding

 Stick (SMAW) Welding

 TIG (GTAW) Welding

 Air Carbon Arc (CAC-A) Cutting and Gouging

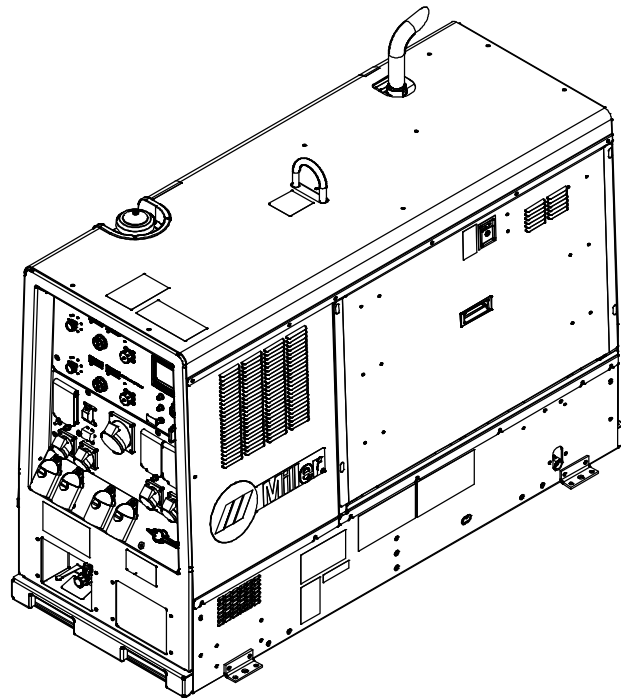
Description



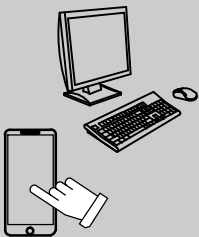
Engine Driven Welder/Generator And Air Compressor

Big Blue[®] 800 X Duo Air Pak[®]

Eff w/Serial No. MJ200857R And Following



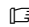
PARTS MANUAL



For product information,
Owner's Manual translations,
and more, visit

www.MillerWelds.com

SECTION 1 – PARTS LIST

 Hardware is common and not available unless listed.

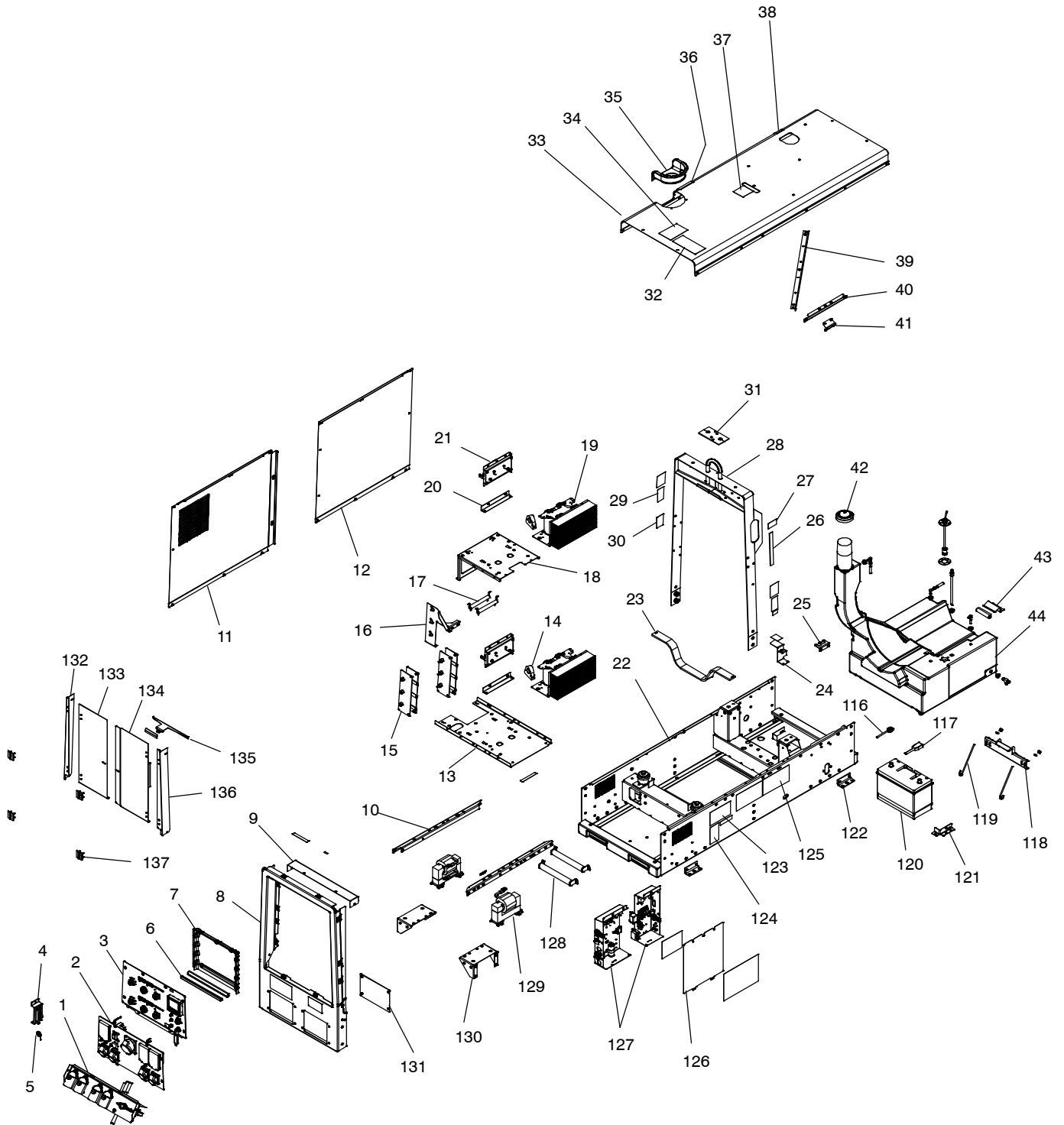
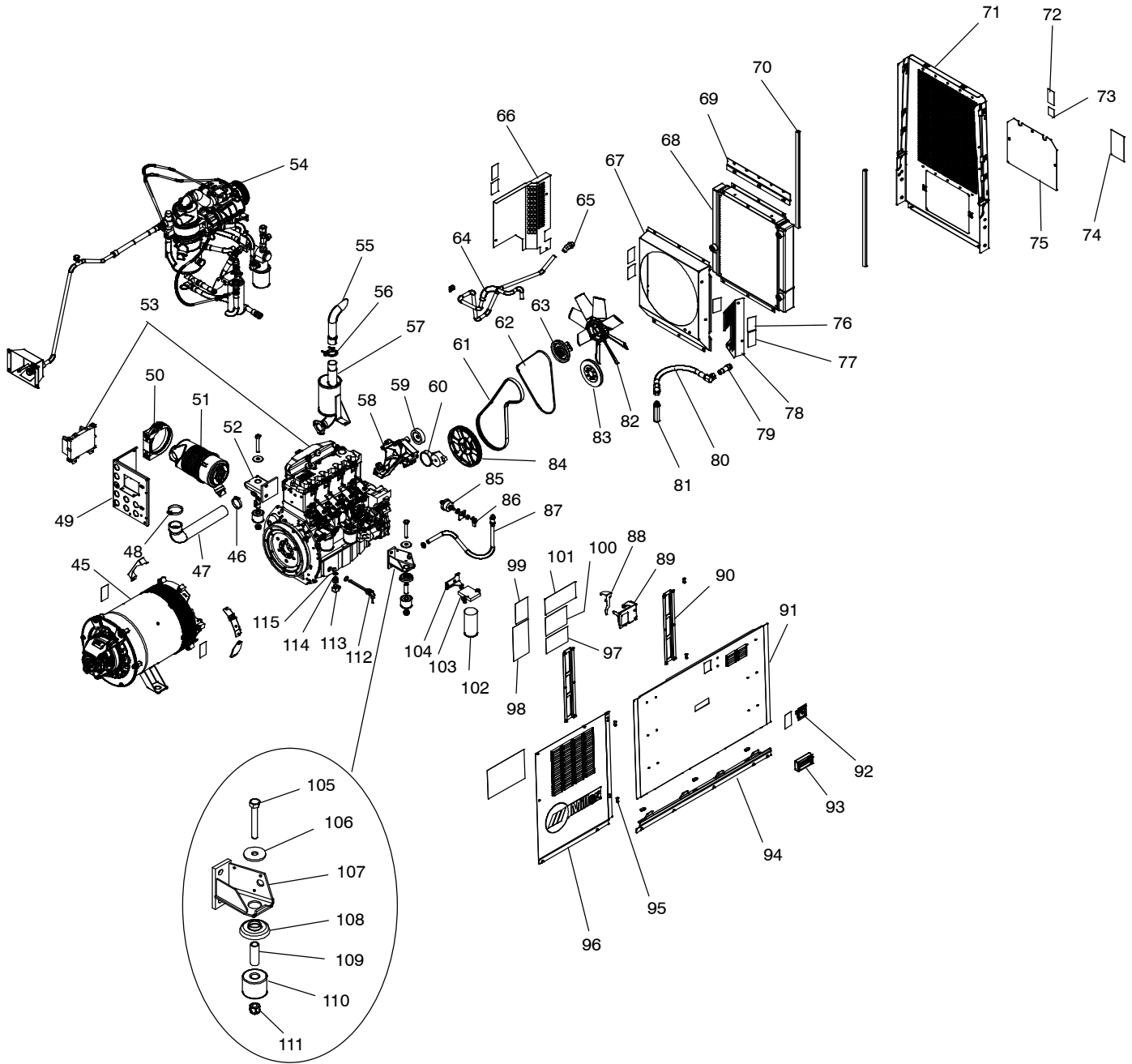


Figure 1-1. Main Assembly

Eff w/Serial No. MJ200857R And Following



907763

Eff w/Serial No. MJ200857R And Following

Item No.	Dia. Mkgs.	Part No.	Description	Quantity
Figure 1-1. Main Assembly				
1		Figure 1-4	Weld Output Panel	1
2		Figure 1-5	Auxiliary Power Panel	1
3		Figure 1-3	Engine & Weld Control Front Panel	1
4	TE1	255682	Block, Term Assy Standard W/Clamp	1
5	CT1	105370	Xfmr. Current	1
6		277521	Seal, Enclosure Opening D 13.688	2
7		276357	Cover, Control Board (Dual)	1
8		254117	Upright, Front	1
		209683	Label, Warning Safety Air System	1
9		191448	Cover, Top Front Upright	1
10		206352	Brace, Front To Center Upright	2
11		260581	Panel, Generator Lh	1
12		259533	Panel, Engine Extension Lh	1
13		256487	Pan, Vault & Capacitors	1
14	HD1, HD21	168829	Transducer, Current 1000A Module Max Open Loop	2
15	SR6, SR26	279872	Rectifier, Si 3ph 300 Amp 600 Piv	2
16		259039	Bracket, Mtg Rectifier	1
17	R10, R210	188067	Resistor, Ww Fxd 100 W 200 Ohm W/Clips	2
18		256489	Bracket, Mtg Vault	1
19		Figure 1-8	Weld Output Module	2
20		279485	Bracket, Mtg Wcc Filter Network Potted Assy	2
21	PC3	269559	Circuit Card Assy, Wcc Filter Network Potted	2
22		+269943	Base	1
23		218086	Bracket, Holddown Fuel Tank	1
24		260961	Bracket, Mtg Switch	1
25		209094	Bracket, Mtg Hose	1
26		227731	Label, Caution Do Not Use Ether (Trilingual)	1
27		210151	Label, Air Cleaner Location	1
28		+255669	Upright, Center Assy	1
29		272334	Label, Warning Moving Parts (En/Fr-Sym)	1
30		272333	Label, Warning Hot Parts (En/Fr-Sym)	1
31		189464	Seal, Weather Lift Eye	1
32		282178	Label, Warning Breathing Diesel Engine Exhaust	1
33		+266513	Cover, Top	1
34		272340	Label, Danger Using A Generator Indoor (En/Fr/Sp-Sym)	1
35		189052	Grommet, Plastic Neck Filler Fuel	1
36		227728	Label, Warning Use Diesel Fuel Only (Trilingual)	1
37		272339	Label, Warning Falling Equipment (En/Fr-Sym)	1
38		272333	Label, Warning Hot Parts (En/Fr-Sym)	1
39		191354	Support, Cover	1
40		206604	Channel, Stiffener Engine Access	1
41		190992	Keeper, Latch Engine Access Door	1
42		254678	Cap, Tank Screw-on 3.500 In W/Vent W/Lanyard 8"	1
43		196220	Bracket, Holddown Fuel Tank Rear	1
44		268932	Tank, Fuel (Consisting Of)	1
		124253	Bushing, Tank Fuel	3
		189912	Fitting, Stl Barbed Elbow W/.047 In Orf Zinc Pld	1
		189913	Fitting, Stl Barbed Elbow Zinc Pld	1
		181572	Bushing, Tank Fuel	1
		259499	Ftg, Stand Pipe Hose .500 X 9.265 Lg 90 Deg Zinc	1
		084173	Clamp, Hose .460 - .545 Clp Dia Slftrng	2
		264196	Sender, Fuel Gauge Reed Switch 9in	1
		189910	Fitting, Stand Pipe Hose .3125 X 9.260 Lg 90deg Zinc	1
		181572	Bushing, Tank Fuel	2
		189908	Valve, Drain Fuel 180deg	1
		254678	Cap, Tank Screw-On 3.500 In W/Vent W/Lanyard 8in	1
		228054	Gasket, Fuel Sender/Fuel Tank	1
45		Figure 1-7	Generator	1
46		010862	Clamp, Hose 1.562 - 2.500 Clp Dia	1
47		266520	Hose, Air Intake	1
48		023313	Clamp, Hose 1.312 - 3.500 Clp Dia	1
49		265397	Bracket, Mtg Air Cleaner	1

Eff w/Serial No. MJ200857R And Following

Item No.	Dia. Mkgs.	Part No.	Description	Quantity
Figure 1-1. Main Assembly (Continued)				
50		189763	Bracket, Mtg Air Cleaner	1
51		255768	Air Cleaner, Intake (Engine)	1
		*192938	Filter, Air Element Primary	1
		◆192939	Filter, Air Element Safety	1
52		191809	Bracket, Mtg Engine Lh Hd	1
53		267435	Engine, Deutz Dsl Elec Td2011I04 (T4i)	1
		*067265	Oil Filter	1
54		Figure 1-9	Compressor Assembly	1
55		105734	Pipe, Muffler Extension Elbow 1.750 Od	1
56		010875	Clamp, Muffler 2.000 Dia U Pld	1
57		266515	Muffler, Exhaust W/Manifold Deutz 2011	1
58		206613	Bracket, Mtg Fan/Alternator	1
59		208428	Idler Pulley	1
60		208040	Tensioner, Belt W/Pulley	1
61		218609	Belt, Micro V 21mm X 1485mm	1
62		207808	Belt, V .375 X 45.125 Lg	1
63		208024	Pulley, Fan Assy W/Bearings	1
		208042	Spacer, Stl .800 Id X 1.188 Od X .090 Thk	1
64		239507	Hose, Tubing Oil Assy W/Fittings 22.380lg	1
65		240354	Ftg, Stl Adapter 3/4 Sae-3/4 Jic 45 Deg	1
66		267977	Guard, Fan Lh W/Heat Shield	1
67		+239503	Shroud, Fan	1
		272334	Label, Warning Moving Parts (En/Fr-Sym)	1
68		239501	Cooler, Oil Engine/Compressor	1
69		265398	Plate, Cover Cooler	1
70		260226	Extrusion, Rubber W/Adhesive .750 X .750 X 27.000	2
71		254275	Upright, Rear Radiator	1
72		272334	Label, Warning Moving Parts (En/Fr-Sym)	1
73		272335	Label, Notice Do Not Disconnect Batt (En/Fr/Sp-Sym)	1
74		272341	Label, Warning Battery Explosion (En/Fr-Sym)	1
75		+201183	Cover, Battery Access	1
76		272334	Label, Warning Moving Parts (En/Fr-Sym)	1
77		272498	Label, Notice Compressor Oil Fill (En/Fr-Sym)	1
78		+239505	Guard, Fan Rh	1
79		209623	Ftg, Stl Adapter Long 3/4 Sae-3/4 Jic	1
80		209633	Hose, Tubing Oil Assy W/Fittings 20.000lg	1
81		239515	Extension, Hydraulic 37 Deg Flare	1
82		207203	Fan, Engine Cooling 18.000 8 Blade Suction	1
83			Crankshaft Pulley (available from engine manufacturer)	1
84		206800	Pulley, Crankshaft	1
85		209611	Switch, Disc Battery 2p 6-36 Volts	1
86		209612	Lever, Switch Lockout Disconnect Switch	1
87		199505	Hose Assy, Oil Drain 32.000 Lg (Consisting Of)	1
		165271	Valve, Oil Drain 3/8-18nptf	1
		176529	Fitting, Hose Brs Barbed Fem 1/2tbg X 3/8npt	1
		113854	Hose, Sae .500 Id X .780 Od Xc Oil (Order By Ft)	2ft
88		209093	Bracket, Safety Latch	1
89		209092	Bracket, Mtg Safety Latch	1
90		209090	Bracket, Stiffener Panel	2
91		+259532	Panel, Engine Access Lift Off	1
92		209667	Latch, Paddle w/ Lock	1
93		210681	Handle, Pocket Pull Door Access	1
94		259402	Panel, Rocker Short	1
95		191626	Bumper, Door Access Engine	7
96		259406	Panel, Generator Rh	1
97		260658	Label, Maintenance Air Compressor	1
98		278415	Label, Help Codes	1
99		278439	Label, Fuel/Hour/Engine Shutdown	1
100		209059	Schematic, Air System (Big Blue Air Pak)	1
101		206464	Label, Maintenance Big Blue Air Pak Deutz	1
		257139	Fuel Line Assy, W/Clamps 11.000 In	1

Eff w/Serial No. MJ200857R And Following

Item No.	Dia. Mkgs.	Part No.	Description	Quantity
Figure 1-1. Main Assembly (Continued)				
.. 102		*192744	Filter, Fuel Secondary	1
..		*255764	Filter, Fuel Pri	1
.. 103		267764	Base, Fuel Filter Assy	1
.. 104		239542	Bracket, Fuel Filter Mounting	1
.. 105		199849	Screw, 625-11 X 4.00hexhd Pln Gr 5 Pld	2
.. 106		071731	Washer, Flat .656 Id X 2.250 Od X .187t Stl Pld	2
.. 107		191812	Bracket, Mtg Engine Rh	1
.. 108		071890	Retainer, Mount Eng/Gen	2
.. 109		071730	Tubing, Stl .875 Od X 12ga Wall X 2.500	2
.. 110		083476	Mount, Eng/Gen Nprn .875 Id X 2.500 Od X 2.000	2
.. 111		135205	Nut, 625-11 .94hex .76h Stl Pld Elastic Stop Nut	2
.. 112		207847	Heater, Oil Pan 120V 300W 22mm X 1.5 Metric Thd	1
.. 113		176528	Ftg, Hose Brs Barbed Elbow M 1/2 Tbg X 1/2 Npt	1
.. 114		173336	Ftg, Adapter Oil Drain	1
.. 115		066298	Washer, Seal Oil Cu .722 Id X .937 Od X .056 T	1
.. 116		190206	Cable, Bat Neg 42.000 No 1 Awg W/Clamp & .400 Rng	1
.. 117		260236	Cable, Bat Pos 24.000 No 1 Awg W/Clamp & .400 Rng	1
.. 118		266385	Bracket, Battery Holddown	1
.. 119		201006	Bolt, J Stl .312-18 X 8.500 Pld	2
..		208041	Spacer, Stl .323 Id X .625 Od X .141 Thk	2
.. 120			Battery, Stor 12V 925 Crk 195 Rsv Gp 31 Maint Free	1
.. 121		264924	Bracket, Battery Locator	1
.. 122		191897	Bracket, Mtg Unit	4
.. 123		272342	Label, Warning Do Not Weld On Base (En/Fr-Sym)	2
.. 124			Label, Rating	1
.. 125		272343	Label, Warning General Precautionary (En/Fr-Sym)	1
.. 126		258582	Cover, Control Box	1
.. 127		Figure 1-2	Control Box Assembly	1
.. 128	.. R3, R8	189699	Resistor, Ww Tap 375 W 10 Ohm W/Mtg Bkt	1
.. 129	.. Z1, Z21	249772	Stabilizer	2
.. 130		248940	Bracket, Mtg Stabilizer	2
.. 131		207096	Cover, Box Front Upright	1
.. 132		265249	Mount, Access Lh	1
.. 133		259265	Door, Access Lh	1
.. 134		259268	Door, Access Rh W/Om Pocket	1
.. 135		259266	Tab, Lockout	1
.. 136		265250	Mount, Access Rh	1
.. 137		189975	Hinge, Door Access 180 Deg	4
..		280613	Kit, Service Control Board	1
..		281312	Kit, Service Fuel Fitting Install	1
..		282921	Kit, Service ELCB 16A	1

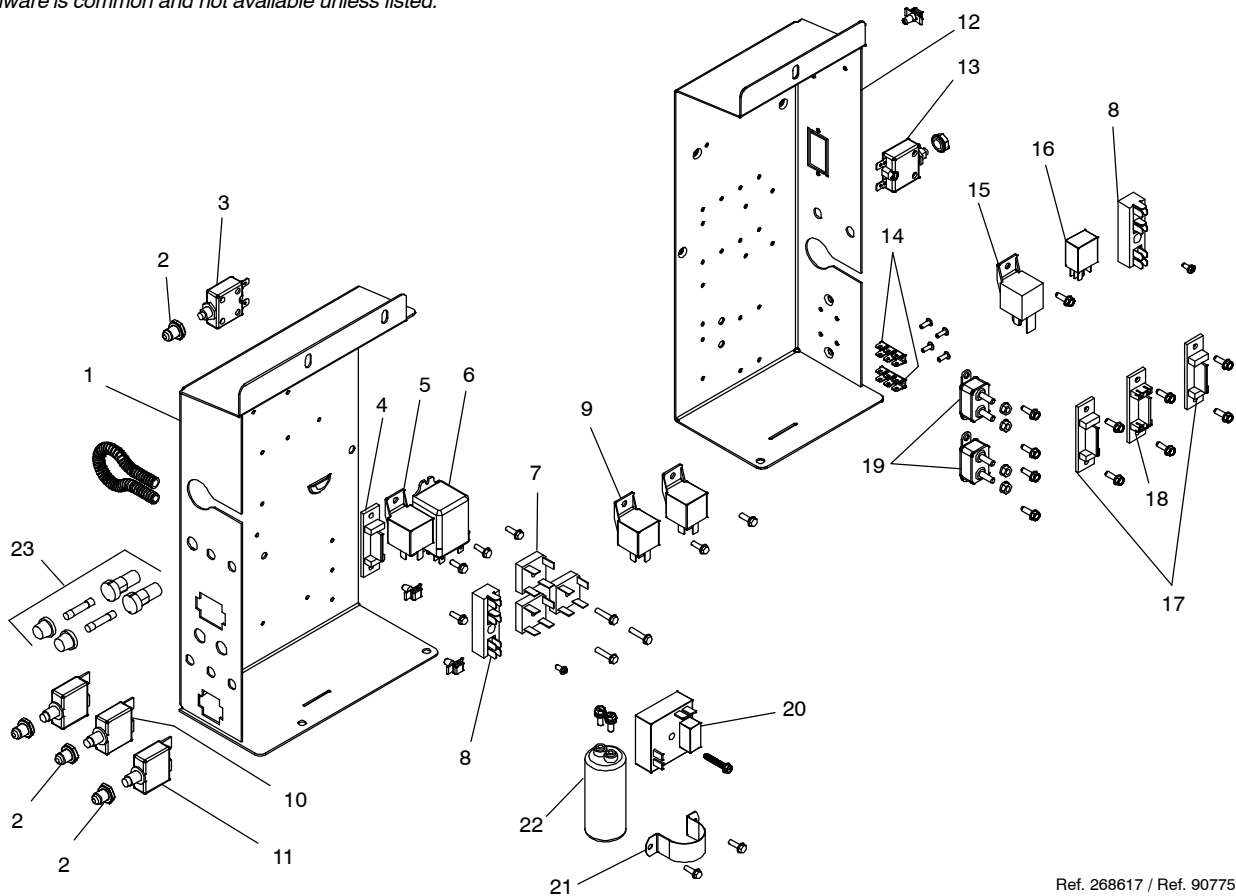
*Recommended Spare Parts.

+ When ordering a component originally displaying a precautionary label, the label should also be ordered.

To maintain the factory original performance of your equipment, use only Manufacturer's Suggested Replacement Parts. Model and serial number required when ordering parts from your local distributor.

Eff w/Serial No. MJ200857R And Following

Hardware is common and not available unless listed.



Ref. 268617 / Ref. 907752

Figure 1-2. Control Box Assembly

Item No.	Dia. Mkgs.	Part No.	Description	Quantity
----------	------------	----------	-------------	----------


Figure 1-2. Control Box Assembly (Figure 1-1 Item 127)

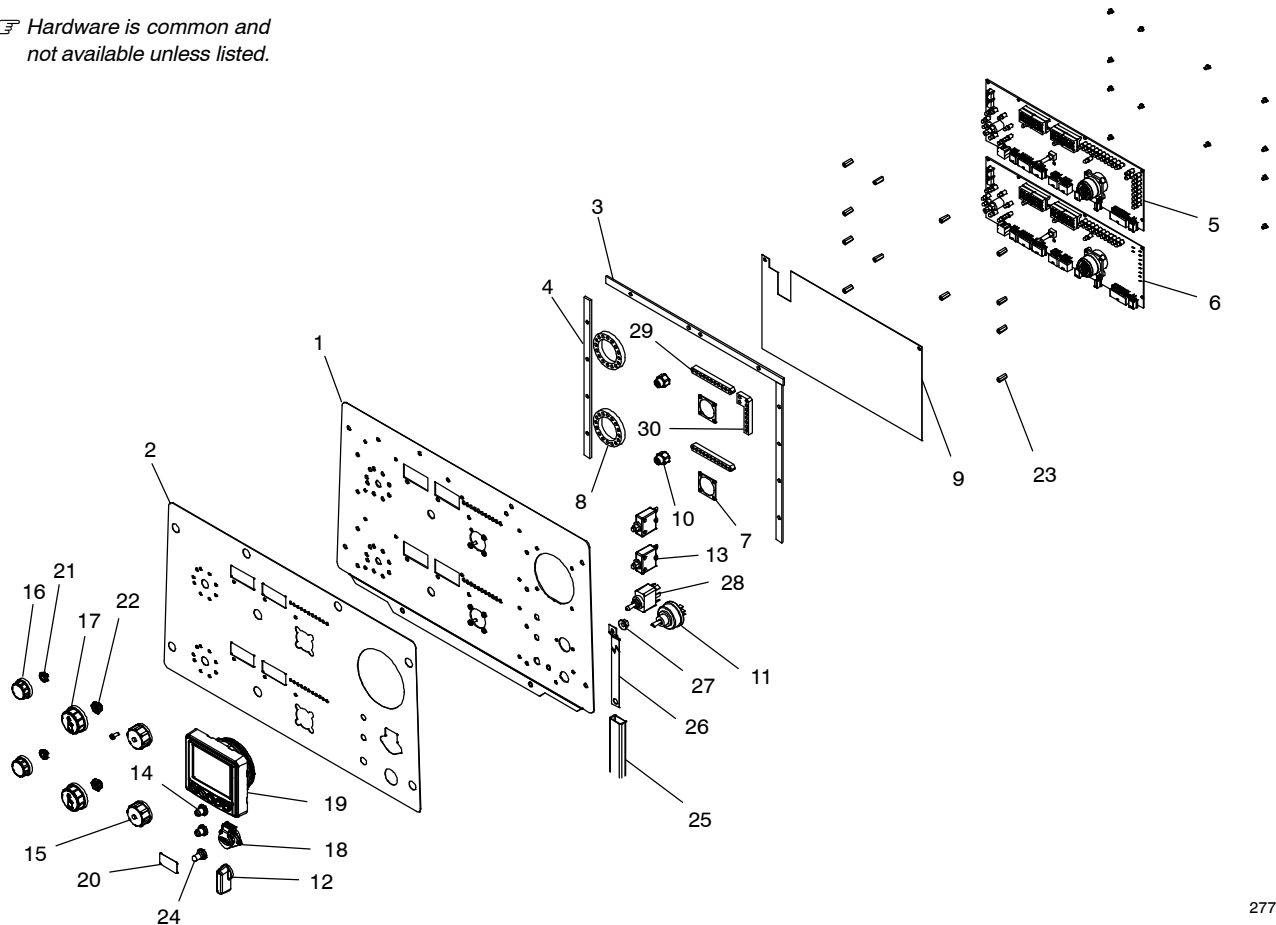
...	1	258577	Control Box, Lh	1
...	2	190323	Boot, Circuit Breaker Clear Hex Nut	3
...	3	083432	Supplementary Pro, Man Reset 1p 10A 250 VAC Frict	1
...	4	189701	Diode/Capacitor Board	1
...	5	090104	Relay, Encl 12VDC Spst 30A/15VDC 5pin Flange Mtg	1
...	6	113247	Relay, Encl 12VDC Dpdt 20A/120VAC 8pin Flange Mtg	1
...	7	SR1-SR2,SR4	Rectifier, Integ Bridge 40. Amp 800V	3
...	8	TE2, TE3	Block, Term 5-3-3	2
...	9	CR4,CR24	Relay, Encl 12VDC Spdt 50A/30A 5pin Flange Mtg	2
...	10	CB3-CB4	Supplementary Protector, Man Reset 1p 15A 250VAC	2
...	11	CB14	Supplementary Protector, Man Reset 1p 15A 250VAC	1
...	12	201078	Control Box, Rh	1
...	13	CB15	Supplementary Pro, Man Reset 1p 10A 250VAC Frict	1
...	14	129524	Term, Frict 250x032 Uninsul Male .130 Stud Mtg 3pr	1
...	15	CR8	Relay, Encl 12VDC Spst 70A 4pin Flange Mtg	1
...	16	CR5	Relay, Encl 12VDC Spst 35A/14VDC 5 Pin	1
...	17	C10/D10, C12/D12	Diode/Capacitor Board	2
...	18	R6	Resistor Board, 120 Ohm	1
...	19	CB10, CB16	Circuit Breaker, Auto Reset 12VDC 40 Amp	2
...	20	268474	Relay, Delay Fix 12VDC Spst (N.O.) 10A 30Sec	1
...	21	177136	Clamp, Capacitor 1.375 Dia	1
...	22	C6	Capacitor, Elctlt 240 uF 200 VDC Can 1.39 Di	1
...	23	F1-F2	Holder, Fuse Mintr W/10a Slo-Blo Fuse	2

*Recommended Spare Parts.

To maintain the factory original performance of your equipment, use only Manufacturer's Suggested Replacement Parts. Model and serial number required when ordering parts from your local distributor.

Eff w/Serial No. MJ200857R And Following

 Hardware is common and not available unless listed.



277068

Figure 1-3. Panel, Front Engine & Weld Controls

Item No.	Dia. Mkgs.	Part No.	Description	Quantity
----------	------------	----------	-------------	----------

Figure 1-3. Panel, Front Engine & Weld Controls (Figure 1-1, Item 3)


...	1	275689	Panel, Engine/Weld Control	1
...	2		Label, Nameplate (Order by Model and Serial No.)	1
...	3	277517	Gasket, Control Board Cover Top	1
...	4	276583	Seal, Control Board Cover	2
...	5	PC1 280612	Kit, Service Control Board	1
...	6	PC21 280613	Kit, Service Control Board	1
...	7	277524	Gasket, 14 Pin Receptacle	2
...	8	278559	Foam, LED Process Select	2
...	9	279297	Baffle, Lead Protection	1
...	10	278485	Assy, Encoder Nut W/O-Ring	2
...	11	217680	Switch, Ignition 4 Position W/Out Handle	1
...		201244	Washer, Tooth.728idx1.166odx.050t Stl Pld Int.688	1
...	12	207073	Lever, Ignition Switch	1
...	13	CB9,CB29 083432	Supplementary Pro, Man Reset 1p 10A 250VAC Frict	2
...	14	190323	Boot, Circuit Breaker Clear Hex Nut	2
...	15	170391	Conn, Circ Ms Protective Cap Size 20 Nylon	2
...	16	245663	Knob, Encoder 1.250 Dia X .250 Id Push On W/Spring	2
...	17	276230	Knob, Encod 1.67 D. X 6mm Id Push On W/Spring/Print	2
...		280214	Spring, Wave (Stainless Steel)	2
...	18	276484	Harness, Front Panel USB	1
...	19	256689	Display, LCD Alphanumeric Engine	1
...		242579	Screw, K40x 10 Pan Hd-Phl Stl Pld Pt Thread Forming	8
...	20	270453	Label, Warning Read Owner's Manual Wordless	1
...		215000	Screw, 006-32x .18 Hex Hd-Slt Stl Pld	12
...	21	231468	Nut, 375-32 .56hex .22h Brs Conical Knurl	2
...	22	231469	Nut, 500-28 .69hex .28h Brs Conical Knurl	2

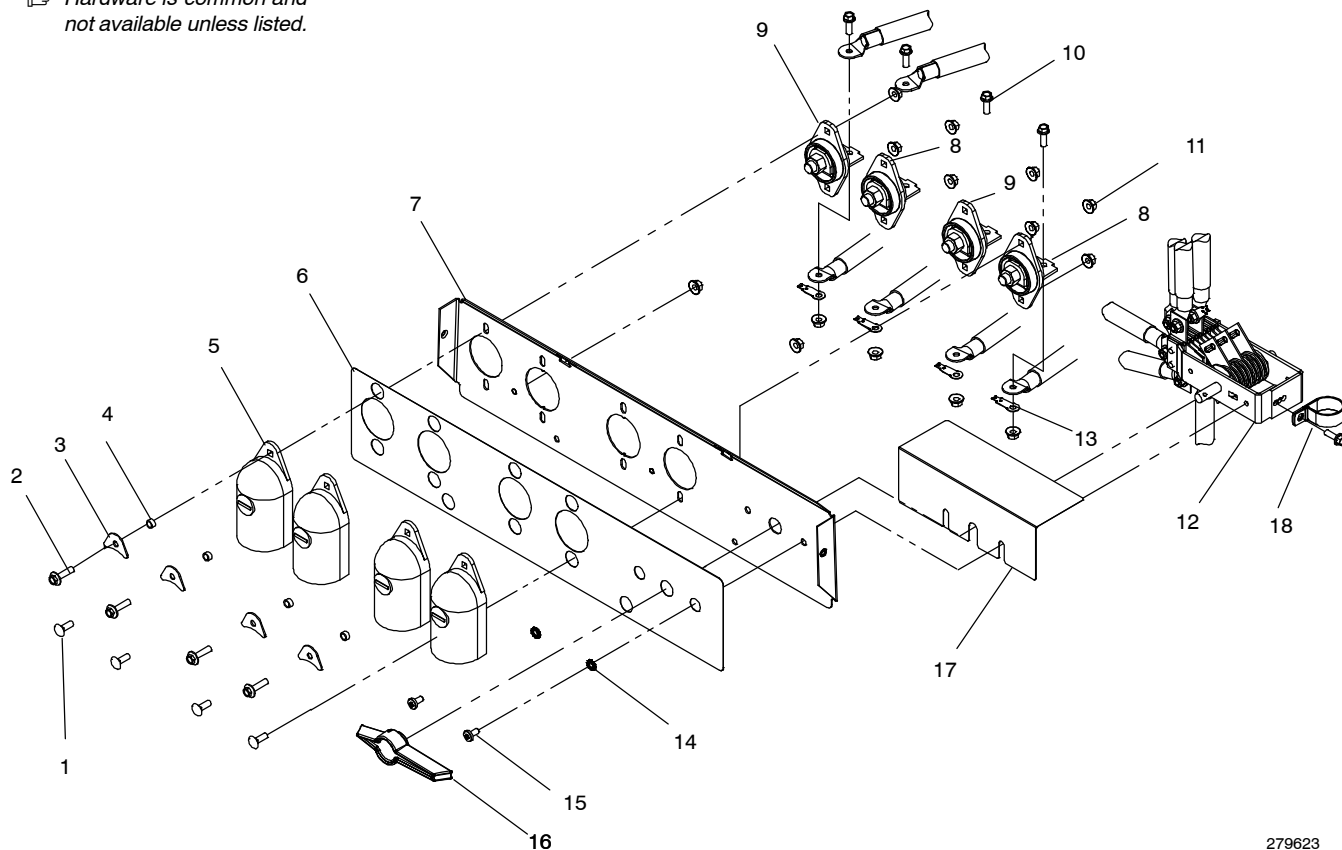
Eff w/Serial No. MJ200857R And Following

Item No.	Dia. Mkgs.	Part No.	Description	Quantity
Figure 1-3. Panel, Front Engine & Weld Controls (Continued)				
... 23		190512	Stand-Off, No 6-32 X .640 Lg .250 Hex Al Fem	12
... 24		021385	Boot, Toggle Switch Lever	1
... 25		086288	Tubing, GI Acryl .750- .786 Id Spool Yel Fa1	.75
... 26		279479	Strap, Grounding 15.12 In Long	1
... 27		152461	Nut, 250-20 .44hex .23h Stl Pld Sem Cone Wshr.65d	1
... 28		206624	Switch, Tgl Sptt 6A 125VAC (On)-On-(On) Spd Term	1
... 29		278563	Foam, LED Dig	2
... 30		278564	Foam, LED Fuel And Service	1
		280214	Spring, Wave (Stainless Steel)	2

To maintain the factory original performance of your equipment, use only Manufacturer's Suggested Replacement Parts. Model and serial number required when ordering parts from your local distributor.

Eff w/Serial No. MJ200857R And Following

 Hardware is common and not available unless listed.



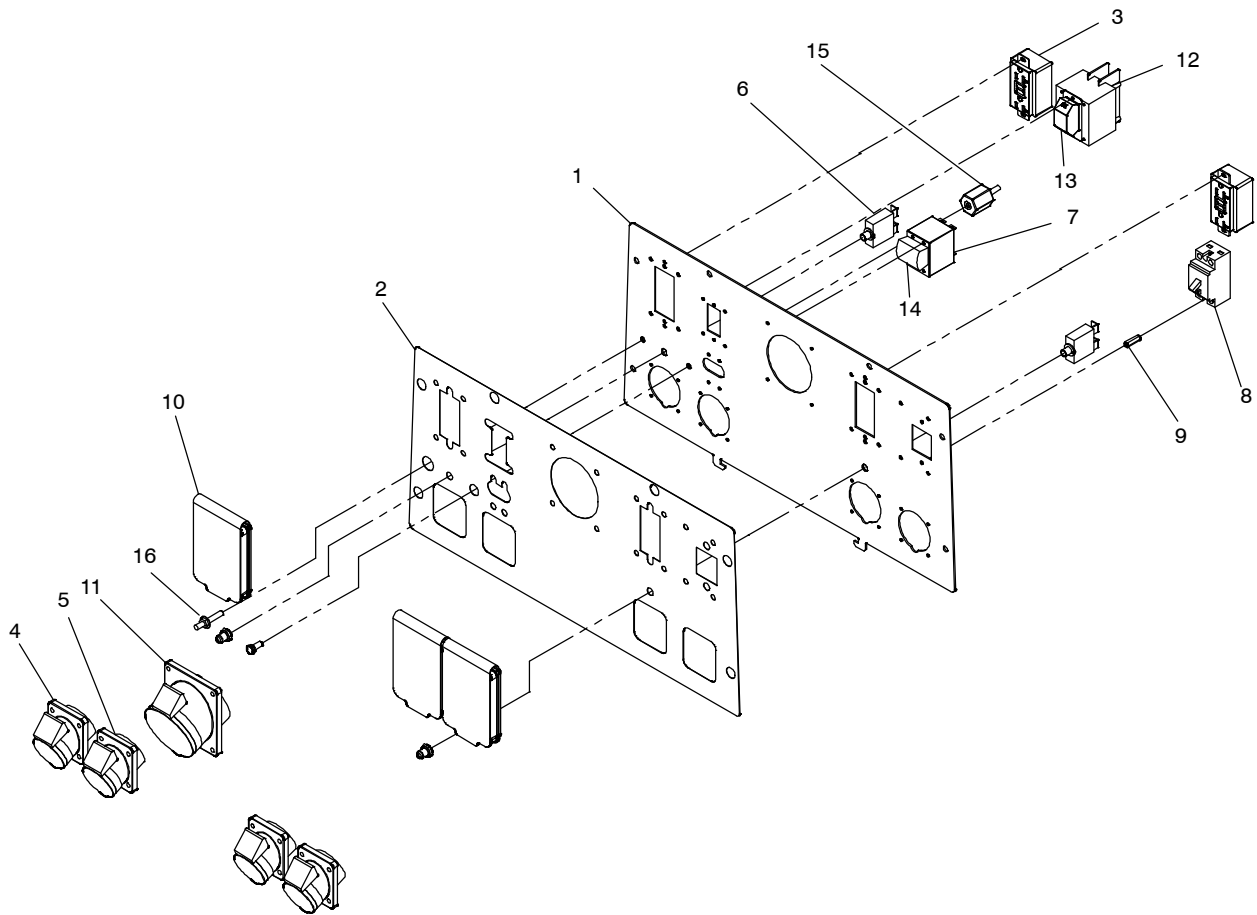
279623

Figure 1-4. Panel, Weld Output

Item No.	Dia. Mkgs.	Part No.	Description	Quantity
Figure 1-4. Panel, Weld Output (Figure 1-1, Item 1)				
...	...	1	005107 .. Bolt, Crg Stl .250-20 X .750 Gr5 Pld	4
...	...	2	108941 .. Screw, 250-20x1.00 Hexwhd.61d Gr5 Pld	4
...	...	3	180735 .. Washer, Output Stud	4
...	...	4	181169 .. Spacer, Output Stud	4
...	...	5	186621 .. Boot, Generic Output Stud	4
...	...	6	258836 .. Label, Output Panel W/Parallel Airpak	1
...	...	7	258685 .. Panel, Mtg Terminal Power Output	1
...	...	8	241433 .. Terminal, Pwr Output Black	2
...	...	9	241432 .. Terminal, Pwr Output Red	2
...	...	10	108940 .. Screw, 250-20x .75 Hexwhd.61d Gr5 Pld	4
...	...	11	152461 .. Nut, 250-20 .44hex .23h Stl Pld Sem Cone Wshr.65d	14
...	S3	12	259356 .. Switch, Paralleling W/Leads	1
...	...	13	010381 .. Connector, Rectifier	4
...	...	14	602208 .. Washer, Tooth.256idx0.510odx.028t Stl Pld Ext.250 A	2
...	...	15	189445 .. Screw, 250-20x .50 Pan Hd-Phl Stl Pld	2
...	...	16	230339 .. Switch Handle W/Pin	1
...	...	17	269892 .. Guard, Polarity Switch	1
...	...	18	127854 .. Clamp, Stl Cush 1.312 Dia X .343 Mtg Hole	1

To maintain the factory original performance of your equipment, use only Manufacturer's Suggested Replacement Parts. Model and serial number required when ordering parts from your local distributor.

Eff w/Serial No. MJ200857R And Following



264 996

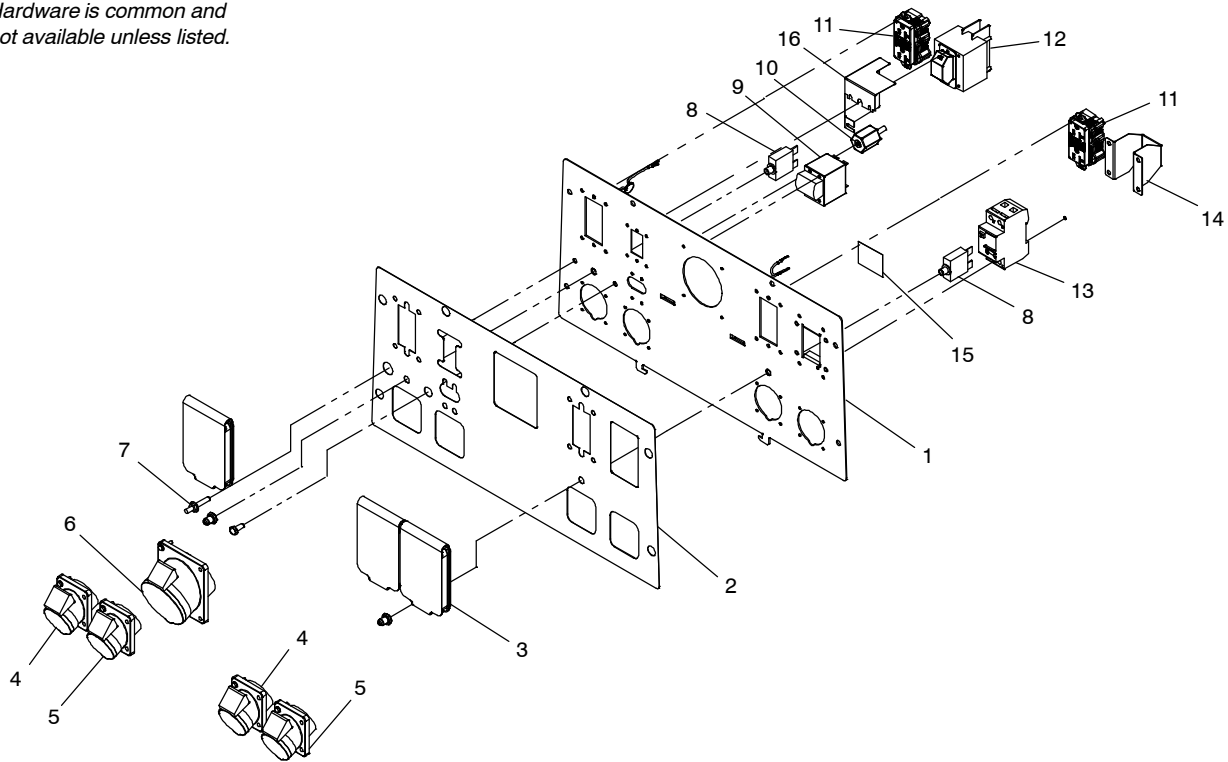
Figure 1-5. Panel, Auxiliary Power Export Deluxe Prior to Serial No. MJ420704R

Item No.	Dia. Mkgs.	Part No.	Description	Quantity
Figure 1-5. Panel, Auxiliary Power Export Deluxe Prior to Serial No. MJ420704R				
1		264997	Panel, Aux Power (Ex) Deluxe	1
2			Label, Aux Power (Ex) Deluxe (Order by Model and Serial No.)	1
3	GFCI1-GFCI2	280236	Receptacle, GFCI 15/20A	2
	C1-C2	217054	Capacitor, Cer Disc .0047 uF 3000 VDC W/Terms	2
4	RC1-RC2	173555	Rcpt, Str 2p3w 16A 130V Flange Mtg	2
5	RC3-RC4	176355	Rcpt, Str 2p3w 16A 220V Flange Mtg	2
6	CB7-CB8	093996	Supplementary Pro, Man Reset 1p 20A 250VAC Frict	2
7	CB5	266567	Supplementary Protector, Man Reset 2p 40A 240VAC	1
8	ELCB1	222991	Circuit Breaker, Elcb 16A 220V 0.030A Trip	1
9		144844	Stand-Off, No 6-32 X .875 Lg .250 Hex Al Fem	2
10		209056	Cover, Receptacle W/Gasket	3
11	RC5	251972	Rcpt, Str 4p5w 32A 400V 3ph Flange Mtg	1
12	CB1	254884	Supplementary Protector, Man Reset 3p 30A 480VAC	1
13		214927	Boot, Circuit Breaker 1 Pole	1
14		203016	Boot, Circuit Breaker 2 Pole	1
15		207560	Insulator, Stand-Off With Stud	1
16		197203	Grounding Stud Assy, Brass	1

To maintain the factory original performance of your equipment, use only Manufacturer's Suggested Replacement Parts. Model and serial number required when ordering parts from your local distributor.

Eff w/Serial No. MJ200857R And Following

Hardware is common and not available unless listed.



282758-A

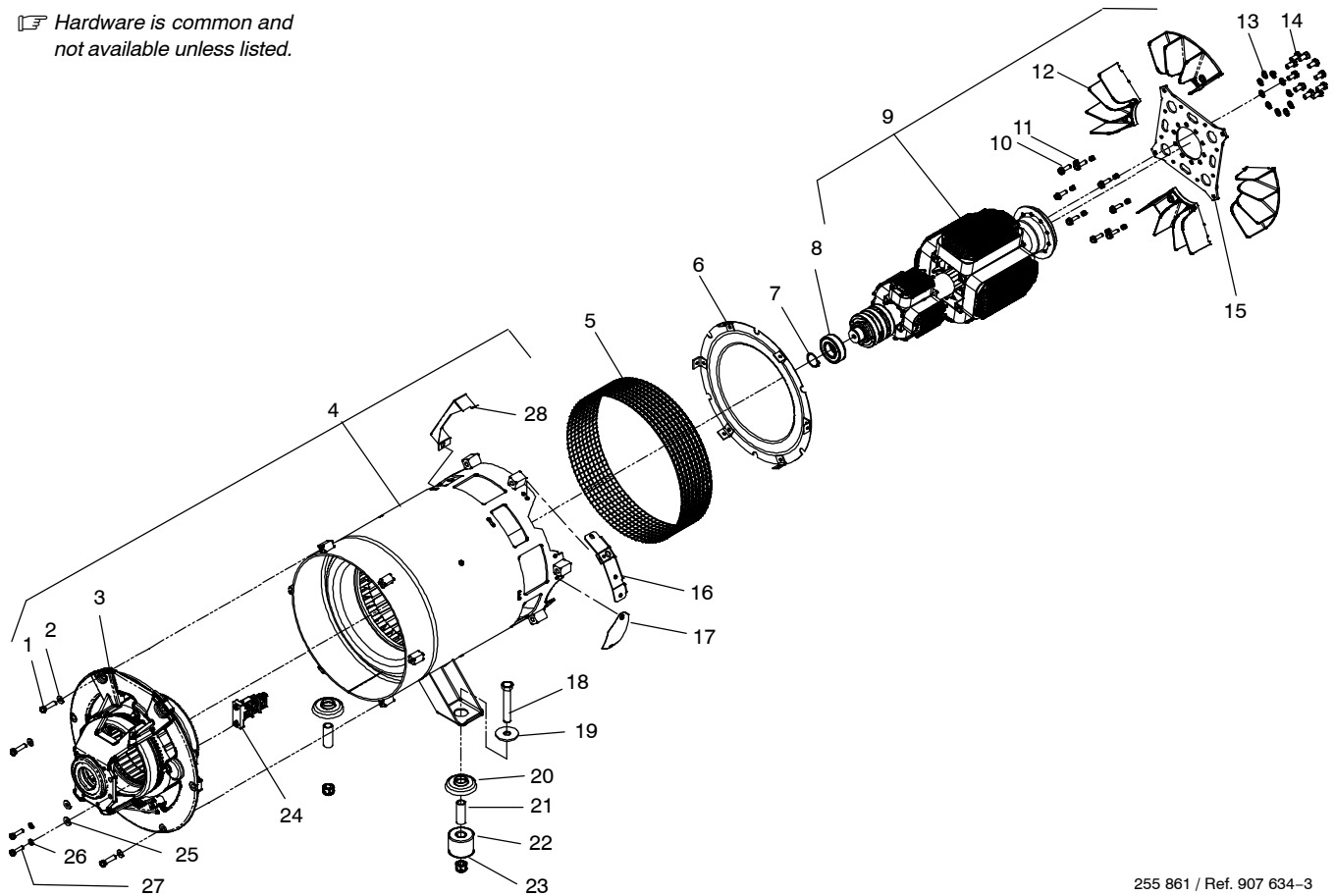
Figure 1-6. Panel, Auxiliary Power Export Deluxe Eff w/Serial No. MJ420704R

Item No.	Dia. Mkgs.	Part No.	Description	Quantity
Figure 1-6. Panel, Auxiliary Power Export Deluxe Eff w/Serial No. MJ420704R				
...	1	282759	Panel, Aux Power (Ex) Deluxe	1
...	2		Label, Aux Power (Ex) Deluxe (Order by Model and Serial Number)	1
...	3	209056	Cover, Receptacle W/Gasket	3
...	4	RC1-RC2 .. 173555	Rcpt, Str 2p3w 16A 130V Flange Mtg	2
...	5	RC3-RC4 .. 176355	Rcpt, Str 2p3w 16A 220V Flange Mtg	2
...	6	RC5 .. 251972	Rcpt, Str 4p5w 32A 400V 3ph Flange Mtg	1
...	7	197203	Grounding Stud Assy, Brass	1
...	8	CB7-CB8 .. 093996	Supplementary Pro, Man Reset 1p 20A 250VAC Frict	2
...	9	CB5 .. 266567	Supplementary Protector, Man Reset 2p 40A 240VAC	1
...		203016	Boot, Circuit Breaker 2 Pole	1
...	10	207560	Insulator, Stand-Off With Stud	1
...	11	GFCI1-GFCI2 280236	Receptacle, GFCI 15/20A	2
...		C1-C2 .. 217054	Capacitor, Cer Disc .0047 uF 3000 VDC W/Terms	2
...	12	CB1 .. 254884	Supplementary Protector, Man Reset 3p 30A 480VAC	1
...		214927	Boot, Circuit Breaker 1 Pole	1
...	13	ELCB1 .. 282446	Circuit Breaker, Rccb 16A 240V 0.030A Trip	1
...	14	282731	Bracket, Rccb Single Din Rail Mtg	1
...	15	272330	Label, Warning Electric Shock/Moving Parts (Sym)	1
...	16	263778	Guard, Supplementary Protector	1

To maintain the factory original performance of your equipment, use only Manufacturer's Suggested Replacement Parts. Model and serial number required when ordering parts from your local distributor.

Eff w/Serial No. MJ200857R And Following

☞ Hardware is common and not available unless listed.



255 861 / Ref. 907 634-3

Figure 1-7. Generator

Item No.	Dia. Mkgs.	Part No.	Description	Quantity
----------	------------	----------	-------------	----------

Figure 1-7. Generator (Figure 1-1, Item 45)

...	1	132053	.. Screw, 375-16x1.50 Hex Hd-Pln Gr5 Pld Blk	6
...	2	183387	.. Washer, Cone .380idx .860odx.109t Stl Pld 4000lbs	6
...	3	278733	.. Endbell, W/Exciter Stator (Includes)	1
...		257974	.. Kit, Endbell w/O-ring (Includes)	
...		203635	.. Endbell, Gen	1
...		143220	.. O-Ring, 2.859 Id X .139 Cs 70 Duro Viton	1
...		278735	.. Stator, Exciter/Aux Power	1
...		604538	.. Washer, Flat .344idx0.688odx.065t Stl Pld Ansi.312	4
...		172684	.. Nut, 312-18 .50hex .27h Stl Pld Sem Cone Wshr.76d	4
...		604537	.. Nut, 312-18 .50hex .28h Stl Pld	4
...		604538	.. Washer, Flat .344idx0.688odx.065t Stl Pld Ansi.312	4
...		261463	.. Screw, 312-18x4.50 Hex Hd-pln Stl Gr5 Pld Full	4
...	4	+273541	.. Stator, Weld/Power Assy Complete (Includes)	1
...		273484	.. Stator, Weld/Power	1
...		258654	.. Barrel, Stator (CH)	1
...	5	190197	.. Guard, Generator Wire Mesh	1
...		172674	.. Spring, Ext .240 Od X .041 Wire X 3.500 Pld	2
...	6	039207	.. Baffle, Air Gen	1
...		172555	.. Screw, M10-1.5x 50 Hex Hd-Pln 8.8 Pld	6
...	7	024617	.. Ring, Rtnng Ext 1.375 Shaft X .050 Thk	1
...	8	053390	.. Bearing, Ball Rdl Sgl Row 1.370 X 2.830 X .6	1
...	9	251855	.. Rotor, Generator	1
...	10	080389	.. Screw, 312-18x1.00 Hexwhd.66d Stl Pld Slffmg Tap-Rw	8
...	11	083883	.. Washer, Lock .402idx0.709odx.087t Stl Pln Split10mm	8
...	12	206242	.. Fan, Rotor Segmented Assy Gen	4

Eff w/Serial No. MJ200857R And Following

Item No.	Dia. Mkgs.	Part No.	Description	Quantity
Figure 1-7. Generator (Continued)				
... 13		083883	Washer, Lock .402idx0.709odx.087t Stl Pln Split10mm	10
... 14		049026	Screw, M10-1.5x 25 Hex Hd-Pln 8.8 Pln	10
... 15		210332	Plate, Flex Hubmount	1
... 16		259483	Bracket, Mtg Magnetic Pickup	1
... 17		191579	Cover, Starter Hole	1
... 18		199849	Screw, 625-11x4.00 Hex Hd-pln Gr5 Pld	2
... 19		071731	Washer, Flat .656idx2.250odx.187t Stl Pld	2
... 20		071890	Retainer, Mount Eng/Gen	2
... 21		071730	Tubing, Stl .875 Od X12ga Wall X 2.500	2
... 22		083476	Mount, Eng/Gen Nprn .875id X 2.500od X 2.000 60 Dur	2
... 23		135205	Nut, 625-11 .94hex .77h Stl Pld Elastic Stop Nut	2
		602159	Screw, 312-18x .75 Hexwhd.66d Stl Pld Slffmg Tap-Rw	6
... 24		189142	Brushholder, Generator	1
		*190823	Brush, Contact Elect .250 X.500 X 1.250 Grd Ay	3
		208469	Clip, Spring	3
... 25		602242	Washer, Flat .375idx0.875odx.083t Stl Pld Blk	2
... 26		602211	Washer, Lock .318idx0.586odx.078t Stl Pld Split.312	2
... 27		604534	Screw, 312-18x1.25 Hex Hd-Pln Gr5 Pld	2
... 28		191577	Guard, Starter	1

+ When ordering a component originally displaying a precautionary label, the label should also be ordered.

*Recommended Spare Parts.

To maintain the factory original performance of your equipment, use only Manufacturer's Suggested Replacement Parts. Model and serial number required when ordering parts from your local distributor.

Eff w/Serial No. MJ200857R And Following

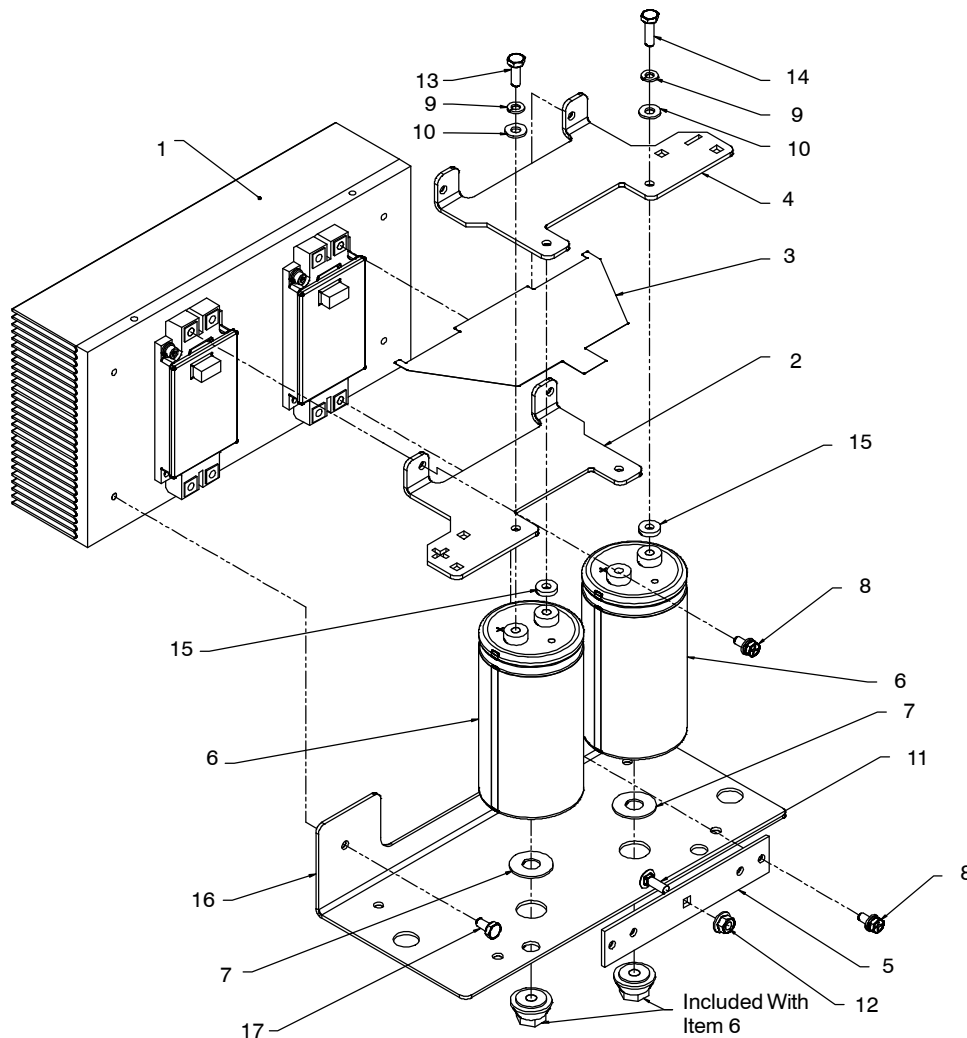


Figure 1-8. Weld Output Module

252 915-D

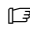
Item No.	Dia. Mkgs.	Part No.	Description	Quantity
----------	------------	----------	-------------	----------

Figure 1-8. Weld Output Module (Figure 1-1, Item 19)

...	1	278884	Heat Sink Assy, IGBT	1
...	2	250350	Bus Bar, Positive	1
...	3	250323	Insulator, Bus Bar	1
...	4	250348	Bus Bar, Negative	1
...	5	245378	Bus Bar, AC	1
...	6	C3 246841	Capacitor, Elctlt 35000 uF 100 VDC Can 3.00 Dia	2
...	7	239547	Washer, Flat Nylon .516 Id X 1.250 Od X .062 Thk	2
...	8	202853	Screw, M 6-1.0x 14 Hex Hd-Phi Stl Pld Sems	8
...	9	602207	Washer, Lock .255idx0.489odx.062t Stl Pld Split.250	4
...	10	227186	Washer, Flat .254idx0.468odx.090t Stl Zc Cl	4
...	11	217283	Bolt, Crg Stl .250-20 X .750 Gr5 Pld	1
...	12	152461	Nut, 250-20 .44hex .23h Stl Pld Sem Cone Wshr.65d	1
...	13	223039	Screw, 250-28x .75 Hex Hd-Pln Stl Gr5 Pld Zinc Blk	2
...	14	223040	Screw, 250-28x .87 Hex Hd-Pln Stl Gr5 Pld Zinc Clr	2
...	15	247093	Stand-Off, Conductive Bus	2
...	16	250346	Bracket, Mtg Capacitors	1
...	17	602154	Screw, 250-20x .50 Hexwhd.50d Stl Pld Slffmg Tap-Rw	2

To maintain the factory original performance of your equipment, use only Manufacturer's Suggested Replacement Parts. Model and serial number required when ordering parts from your local distributor.

Eff w/Serial No. MJ200857R And Following

 Hardware is common and not available unless listed.

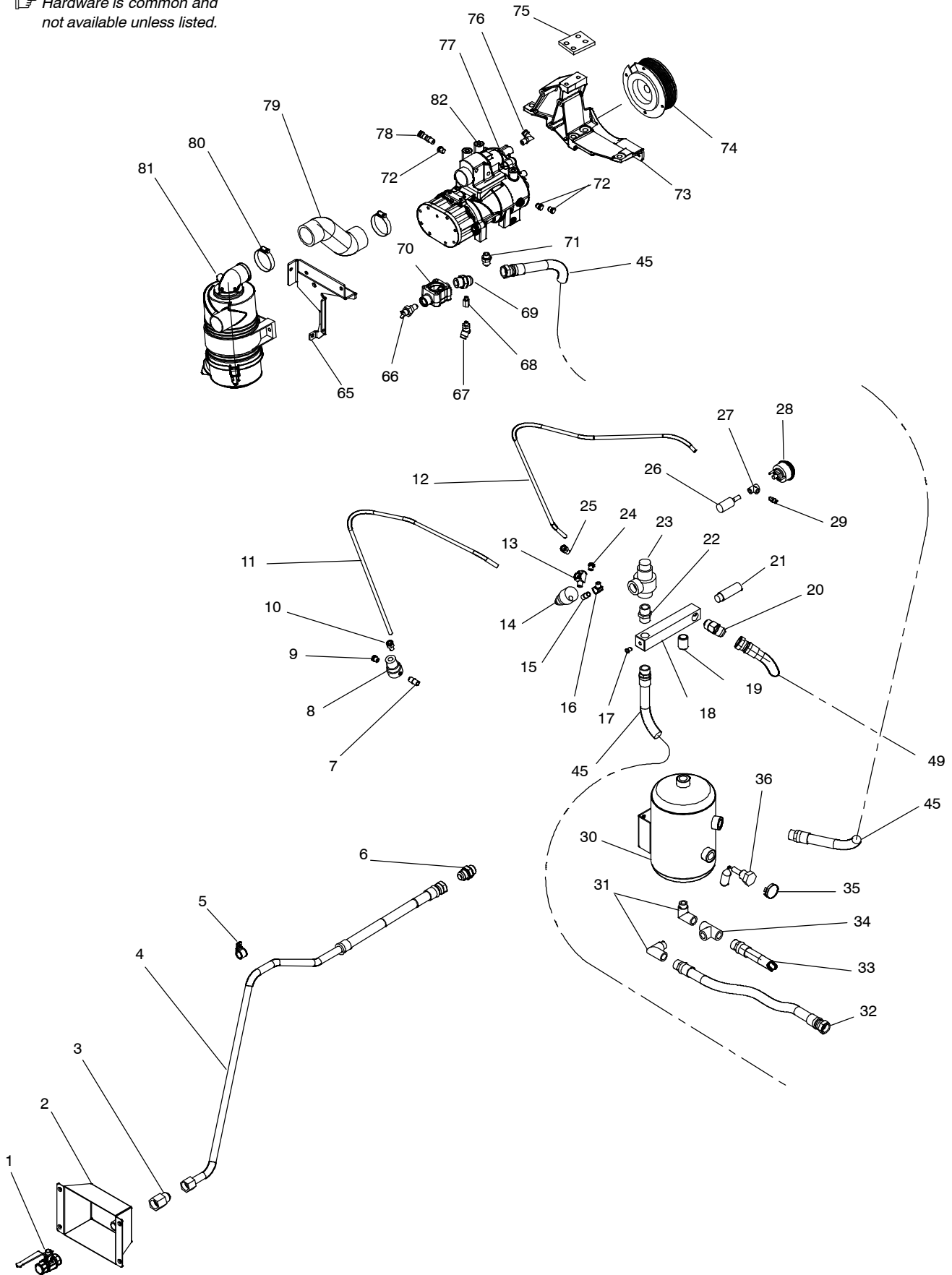
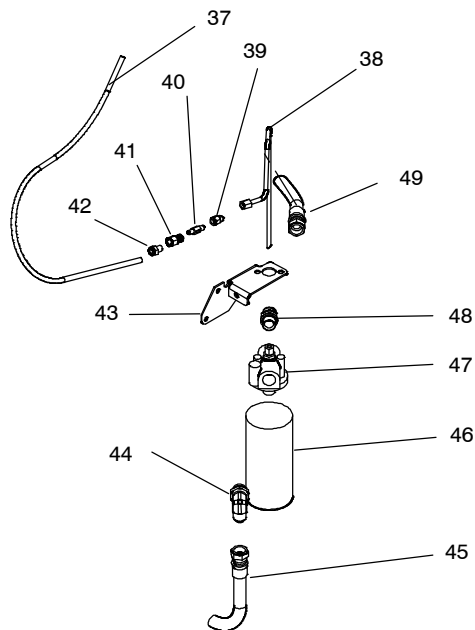
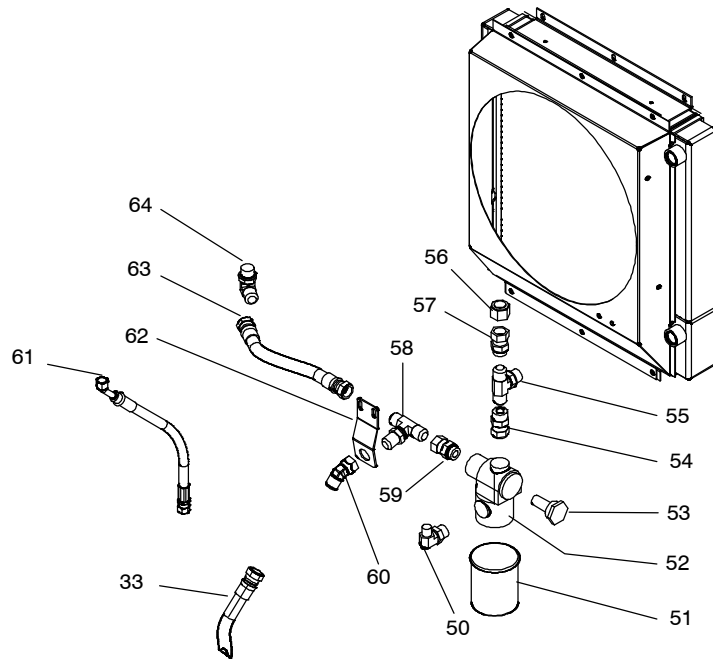


Figure 1-9. Air Compressor

267 588

Eff w/Serial No. MJ200857R And Following



Eff w/Serial No. MJ200857R And Following

Item No.	Dia. Mkgs.	Part No.	Description	Quantity
Figure 1-9. Air Compressor (Figure 1-1 Item 54)				
...	1	233721	Valve, Ball	1
...	2	206606	Box, Valve Ball	1
...	3	210523	Ftg, Flrd Stl Tube End/Female Pipe End 3/4	1
...	4	209635	Hose, Tubing Oil Assy W/Fittings 42.360lg	1
...	5	087318	Clamp, Stl Cush 1.000 Dia X .406 Mtg Hole	1
...	6	209621	Ftg, Stl Adapter 3/4 Sae-3/4 Jic	1
...	7	117826	Ftg, Pipe Brs Nipple Close 1/4 Npt	1
...	8	210054	Valve, Automatic Blowdown	1
...	9	210040	Orifice/Muffler, Blowdown .120	1
...	10	209854	Ftg, Pipe Stl Adapter M 1/4 Npt X 1/4 Line	1
...	11	218601	Hose, Nylon Red 1/4 Id X 3/8 Od X 36 Lg	1
...	12	218602	Hose, Nylon Blue 1/4 Id X 3/8 Od X 44 Lg	1
...	13	071270	Ftg, Pipe Brs Tee St 1/4 Npt 071269	1
...	14	210053	Valve, Pressure Regulator	1
...	15	117826	Ftg, Pipe Brs Nipple Close 1/4 Npt	2
...	16	084999	Ftg, Pipe Brs Elbow St 45 1/4 Npt	1
...	17	151662	Ftg, Pipe Brs Plug Hex .125 Npt	1
...	18	206937	Manifold, Air	1
...	19	209787	Ftg, Pipe Stl Nipple Close 3/4 Npt Scheduling 80	1
...	20	209754	Ftg, Stl Elbow 45 Deg 3/4 Npt (M) X 3/4 Jic (M)	1
...	21	206743	Valve, Safety Relief 150psi	1
...	22	209767	Ftg, Pipe Stl Connector M 3/4 Sae-npt Adapter	1
...	23	210051	Valve, Check Minimum Pressure	1
...	24	210040	Orifice/Muffler, Blowdown .120	2
...	25	209854	Ftg, Pipe Stl Adapter M 1/4 Npt X 1/4 Line	1
...	26	206746	Switch, Pressure 20psi Nc	1
...	27	602965	Ftg, Pipe Brs Tee 1/8 Npt	1
...	28	272762	Sender, Pressure Oil 0-200 Psi	1
...	29	073655	Ftg, Pipe Brs Nipple Hex 1/8 Npt	1
...	30	206939	Tank, Oil Separator	1
...	31	209457	Ftg, Pipe Stl Elbow St 3/4 Npt	2
...	32	209638	Hose, Oil W/Fittings 25.670 Lg	1
...	33	209639	Hose, Oil W/Fittings 22.5 Lg	1
...	34	209766	Ftg, Pipe Stl Tee Street 3/4 Npt M-f-f	1
...	35	247624	Pointer Assembly	1
...	36	210058	Gauge, Oil Level (Modified)	1
...	37	209641	Hose, Nylon White 1/4 Id X 3/8 Od X 36 Lg	1
...	38	209646	Tubing, Sst .312 Od X.028 W/Ftgs	1
...	39	209856	Ftg, Stl Adapter Tube End Reducer 04f X 05m	1
...	40	210027	Valve, Check/Scavenge Orifice/Screen	1
...	41	209755	Ftg, Pipe Stl Swivel F 1/4 Npt X 1/4 F Jic	1
...	42	209854	Ftg, Pipe Stl Adapter M 1/4 Npt X 1/4 Line	5
...	43	208029	Bracket, Mtg Filter Base	1
...	44	214686	Ftg, Pipe Stl Elbow 90dg 3/4bspp O-ring X 3/4 Jic M	1
...	45	210248	Hose Assy, Air W/Fittings 3/4 X 35.250 Lg	2
...	46	*206747	Separator, Oil/Air Filter	1
...	47	220326	Head, Spin On Separator	1
...	48	214687	Ftg, Pipe Stl 3/4bspp X 3/4 Jic M	1
...	49	214685	Hose Assy, Air W/Fittings 3/4 X 20.750 Lg	1
...	50	209756	Ftg, Pipe Stl Elbow M 90dg 1/2 Jic X 3/4 Sae	1
...	51	*206745	Filter, Oil	1
...	52	210052	Valve, Oil Temperature Control	1
...	53	206744	Thermostat, 170f	1
...	54	209825	Ftg, Stl Adapter Swivel 12m X Jic-12 F	1
...	55	209764	Ftg, Pipe Stl Tee Branch Sae-12 X Jic-12	1
...	56	209851	Ftg, Pipe Stl Tube End Cap 3/4 Orfs	1

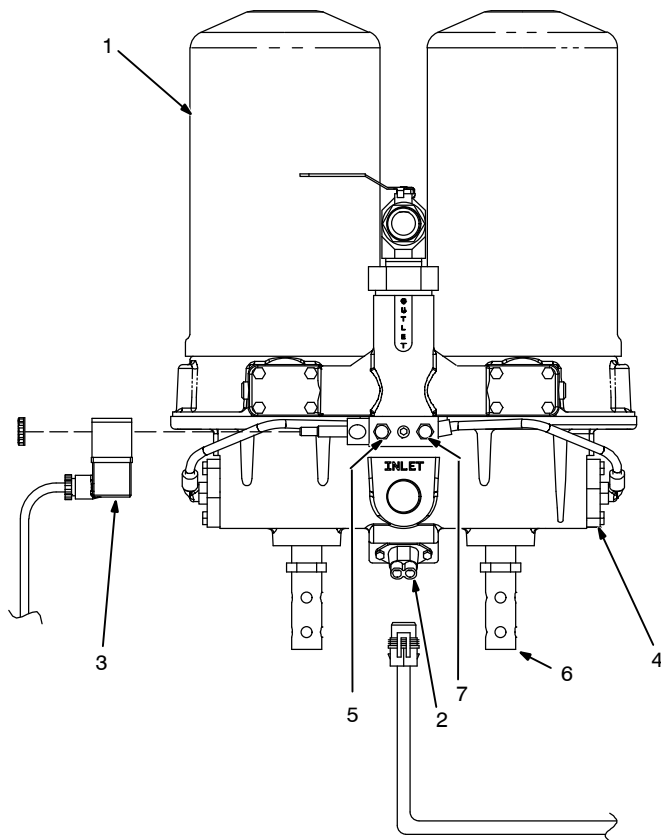
Eff w/Serial No. MJ200857R And Following

Item No.	Dia. Mkgs.	Part No.	Description	Quantity
Figure 1-9. Air Compressor (Continued)				
... 57		210251	Ftg, Stl Swivel Straight Thread Conn 3/4 O-ring	1
... 58		210252	Ftg, Stl Bulkhead Branch Tee 3/4 Flare Tube End	1
... 59		210251	Ftg, Stl Swivel Straight Thread Conn 3/4 O-ring	2
... 60		267651	Ftg, Pipe Stl Swivel 3/4 Jic (M) X 3/4 Jic (F)	1
... 61		243794	Hose, Tubing Oil Assy W/Fittings 19.000lg	1
... 62		267531	Bracket, Mtg Ftg	1
... 63		210250	Hose Assy, Oil W/Fittings 3/4 X 15.500 Lg	1
... 64		209765	Ftg, Pipe Stl Elbow Adapter 90dg 3/4 Sae-jic-	1
... 65		265396	Bracket, Mtg Compressor (Back)	1
... 66		206742	Switch, High Air Temperature 248f Nc	1
... 67		260369	Ftg, Pipe Brs Elbow/Adapter M 1/8 Npt X 3/8 Od Line	1
... 68		209852	Ftg, Pipe Stl Adapter M M10 X 1/8 Npt F	1
... 69		209621	Ftg, Stl Adapter 3/4 Sae-3/4 Jic	1
... 70		211904	Manifold, Compressor	1
... 71		209853	Ftg, Pipe Stl Adapter M M16 1.5 X 1/2 Jic	1
... 72		602887	Ftg, Pipe Brs Plug Hexhd 1/4 Npt	3
... 73		225038	Bracket, Mtg Compressor	1
... 74		256685	Clutch, Electro Magnetic 12VDC W/8 Groove Pulley	1
... 75		206698	Plate, Mtg Compressor To Bracket	1
... 76		260374	Ftg, Pipe Brs Elbow/Adapter M 1/4 Npt X 3/8 Od Line	1
... 77		210001	Airend, Gear-driven W/Tapered Input Shaft	1
...		258419	Kit, Compressor Front Seal	0
... 78		260374	Ftg, Pipe Brs Elbow/Adapter M 1/4 Npt X 3/8 Od Line	1
... 79		254976	Hose, Air Intake	1
... 80		010862	Clamp, Hose 1.562 – 2.500 Clp Dia	2
... 81		249657	Air Cleaner, Intake 5.250 In	1
...		210016	Gasket, Unloader Valve	1
... 82		218305	Valve, Inlet Unloader 90dg	1
...		*197676	Element, Air Cleaner	1
...		*246991	Filter Kit, Ingersoll Rand (Ce55 G1)	1

*Recommended Spare Parts.

To maintain the factory original performance of your equipment, use only Manufacturer's Suggested Replacement Parts. Model and serial number required when ordering parts from your local distributor.

☞ Hardware is common and not available unless listed.



803 328

Figure 1-10. Optional Air Dryer Assemblies


Item No.	Dia. Mkgs.	Part No.	Description	Quantity
----------	------------	----------	-------------	----------

Figure 1-10. Optional Air Dryer Assemblies

...	1	193362	.. Cartridge, Desiccant	2
...	2	193365	.. Heater Assembly, 12 V 75 W	1
...	3	219491	.. Timer, Ctrl w/Cord & Plug (2 Min Cycle)	1
...	4	219492	.. Kit, Unloader Valve (Valve/Misc O-rings/Seals)	1
...		219493	.. Kit, Inlet Valve (Check Valve/Spring/Gasket/O-rings) (Not Shown)	1
...	5	248678	.. Muffler, Exhaust	2
...	6	242536	.. Muffler, Air	2
...	7	239786	.. Valve, Ctrl (Valve/Solenoid) 12 V	1
...		264669	.. Harness, Air Dryer T2000	1

To maintain the factory original performance of your equipment, use only Manufacturer's Suggested Replacement Parts. Model and serial number required when ordering parts from your local distributor.

Eff w/Serial No. MJ200857R And Following

 Some wiring harness components (switches, relays, supplementary protectors) are also referenced elsewhere in this parts list. Purchase components separately or as part of the associated wiring harness.

Item No.	Dia. Mkgs.	Part No.	Description	Quantity
Wiring Harnesses				
		267288	Harness, Engine Deutz (Includes)	1
		267290	Lead Assy, Elect #41	1
		267292	Lead Assy, Elect #46	1
	PLG101	240075	Conn, Rect Jpt Rcpt 25 Pos R Ang Left Key	1
	PLG100	240442	Conn, Rect Jpt Rcpt 25 Pos R Ang Right Key	1
		240076	Conn, Rect Jpt Cover 25 Pos	2
		240074	Seal, Plug Single Wire (5mm Hole)	23
		240071	Plug, Cavity 2.5mm Din72585	36
	PLG104	240077	Conn, Rect Jpt 2 Pos 1 Row	1
	PLG12	215261	Conn, Deutsch 12p 2row Female Plug	1
		215265	Conn, Deutsch Wedge Lock 12 Position	1
	PLG4	238028	Conn, Deutsch 6p 2row Female Plug	1
		238029	Conn, Deutsch Wedge Lock 6 Position	1
	PLG106	266134	Conn, Rect 3 Pos	1
	CLUTCH	212116	Conn, Deutsch 2p 1row Female Plug	1
		212117	Conn, Deutsch Wedge Lock 2 Position	1
	PLG103	240081	Conn, Circ Cpc 7skt	1
		240082	Conn, Circ Cpc Clamp 90deg	1
	PLG102	240098	Conn, Circ Cpc 12skt Size 14	1
		240099	Conn, Circ Cpc Cap Plg	1
		240100	Conn, Circ Cpc Clamp	1
	PLG409	177859	Conn, Body 5 Terminal	1
		148850	Socket, Relay 5 Pin	2
	CB2	139266	Supplementary Protector, Man Reset 1p 15A 250VAC	1
	CR1	252053	Relay, Encl 12VDC Spst 35A/14VDC 5 Pin	1
	S10	206624	Switch, Tgl Sptt 6A 125VAC (On)-(On)-(On)Spd Term	1
	CR5	223710	Relay, Encl 12VDC Dpst-No 25A 6pin Flange	1
	CR10	113247	Relay, Encl 12VDC Dpdt 20A/120VAC 8pin Flange Mtg	1
		164617	Clip, Wiring Straight	2
		268472	Lead Assy, Elect	1
		279497	Harness, Weld Air Pak (Includes)	1
	RC98	135133	Conn, Rect Univ 084 9p/S 3row Rcpt Cable/Panel Lkg	1
	RC30	229933	Conn, Rect Univ 039 10p/S 2row Rcpt Cable/Panel Lkg	1
	PLG3	114655	Conn, Rect Mini 045 6skt 2row Plug Cable Lkg	1
	PLG4,PLG24	116513	Conn, Rect Mini 045 12skt 2row Plug Cable Lkg	2
	PLG5,PLG25	113752	Conn, Rect Mini 045 10skt 2row Plug Cable Lkg	2
	PLG6,PLG26	113751	Conn, Rect Mini 045 8skt 2row Plug Cable Lkg	2
	PLG9,PLG29	117037	Conn, Rect Mini 045 2skt 2row Plug Cable Lkg	2
	PLG10,PLG210	113750	Conn, Rect Mini 045 4skt 2row Plug Cable Lkg	2
		129524	Term, Frict 250x032 Uninsul Male .130 Stud Mtg 3pr	1

Miller Electric Mfg. LLC

An Illinois Tool Works Company
1635 West Spencer Street
Appleton, WI 54914 USA

International Headquarters—USA

USA Phone: 920-735-4505 Auto-Attended
USA & Canada FAX: 920-735-4134
International FAX: 920-735-4125

For International Locations Visit

www.MillerWelds.com

